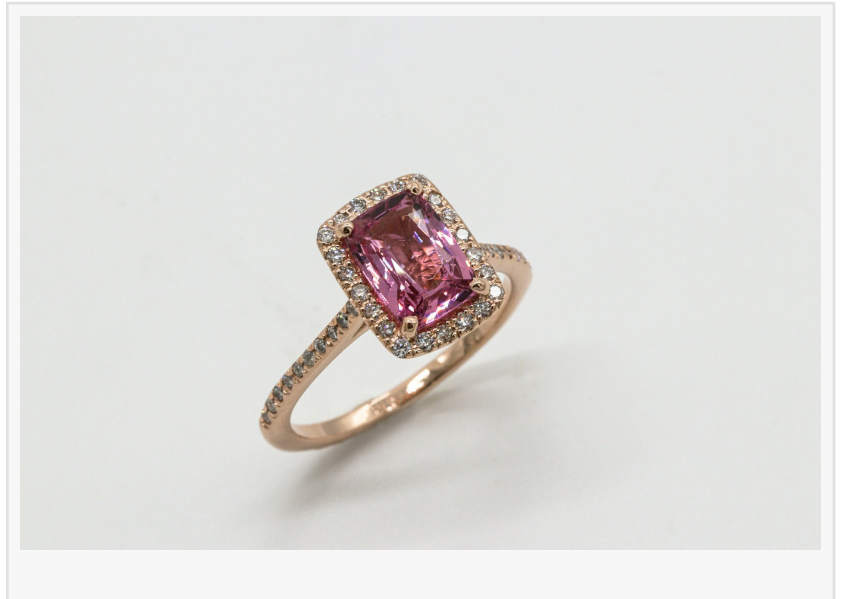


Ritani Unveils Exquisite Collection of Pink and Blue Lab-Grown Diamonds, Championing Ethical Luxury

As Lab Diamonds Become More Popular, Availability of Unique Diamond Colors Increases at Ritani

NEW YORK, NY, UNITED STATES, March 26, 2024 /EINPresswire.com/ -- Ritani, a leader in fine jewelry, has unveiled an exclusive collection of [pink and blue lab-grown diamonds](#). This innovative offering not only underscores Ritani's dedication to quality but also meets the increasing consumer desire for unique jewelry options.



The new collection features a stunning array of pink and blue diamonds, each chosen for its vivid color and exceptional clarity. Pink diamonds, celebrated for their tender, romantic luminance, symbolize love and femininity, making them a favored choice for [engagement rings](#) and anniversary gifts. Blue diamonds, conveying a sense of serenity and confidence, mirror the ocean's depth and the sky's expanse. These hues provide a rich palette for those looking to express their individuality and personal narratives through their jewelry selections.

Ritani's emphasis on [lab-grown diamonds](#) reflects the jewelry industry's broader shift towards sustainable luxury. Lab-grown diamonds are produced in controlled settings using cutting-edge technology, a stark contrast to traditional mining practices with their considerable environmental and ethical concerns. This method significantly lessens the ecological impact associated with diamond extraction and ensures that each gem is crafted with the highest regard for human rights.

Discover the allure of ethical luxury by exploring Ritani's enchanting collection of pink and blue lab-grown diamonds, where beauty and responsibility converge.

Frequently Asked Questions

Q: What makes pink and blue diamonds so special?

A: The rarity and unique allure of pink and blue diamonds make them highly coveted. Beyond their aesthetic appeal, these diamonds carry profound emotional and symbolic significance, rendering them treasured pieces for many.

Q: Are lab-grown diamonds genuine diamonds?

A: Absolutely. Lab-grown diamonds possess the same physical, chemical, and optical characteristics as mined diamonds. The key difference is their origin—lab-grown diamonds are cultivated in a laboratory rather than extracted from the earth.

Ritani's latest collection represents a significant advancement in the fine jewelry sector, offering consumers an opportunity to indulge in luxury while making conscientious choices that benefit the planet. As the demand for sustainable and ethically sourced products continues to rise, Ritani's pink and blue lab-grown diamonds shine as beacons of innovation, beauty, and a steadfast commitment to a brighter future.

Stephen Aponte

Ritani

stephena@ritani.com

Visit us on social media:

[Instagram](#)

This press release can be viewed online at: <https://www.einpresswire.com/article/698918918>

EIN Presswire's priority is source transparency. We do not allow opaque clients, and our editors try to be careful about weeding out false and misleading content. As a user, if you see something we have missed, please do bring it to our attention. Your help is welcome. EIN Presswire, Everyone's Internet News Presswire™, tries to define some of the boundaries that are reasonable in today's world. Please see our Editorial Guidelines for more information.

© 1995-2024 Newsmatics Inc. All Right Reserved.