

Longer Nano Tutorial: Operational Guide and Innovative Applications of the World's First 12W Portable Laser Engraver

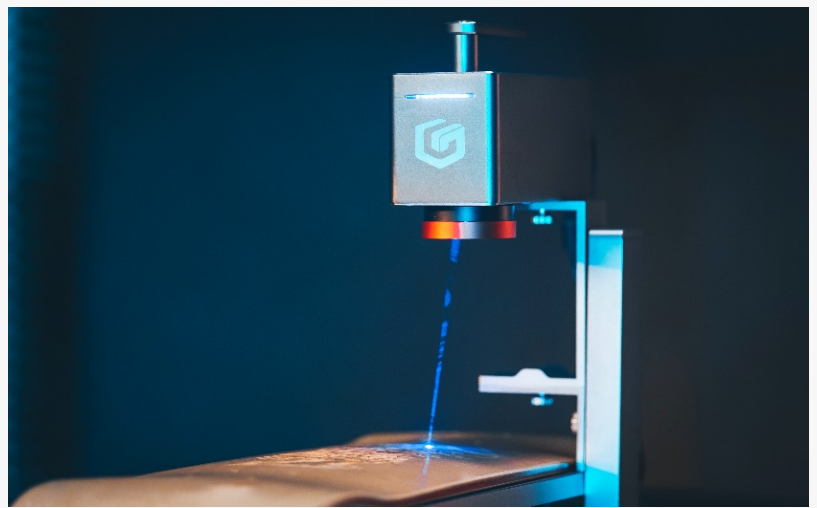
Longer Nano Tutorial: Operational Guide and Innovative Applications of the World's First 12W Portable Laser Engraver

SHENZHEN, GUANGDONG, CHINA,
March 27, 2024 /EINPresswire.com/ --

[The Longer Nano](#), as a portable laser engraver, boasts a user-friendly operation. Initially, creators can consult the product manual to familiarize themselves with the accessories and install the laser engraving machine.

Placing the Longer Nano on a smooth worktable, ensuring the absence of flammable materials nearby, and

connecting the power supply precede pressing the boot button on the host handle to initiate the engraving process.



The Longer Nano laser engraving machine is working

For first-time laser engraving machine users, downloading the LaserBurn app developed by the [Longer team](#) on mobile devices is recommended. LaserBurn, designed for Nano and B1 series laser engraving machines, enhances the convenience of using Longer laser engraving machines. The app's core functions include WiFi network connection, motion control, drawing creation, carving parameters, preview and settings, carving work information display, SD card file carving, carving history, material library, etc., meeting users' demand for mobile phone-controlled laser engraving machines. PC users can opt to download LightBurn or LaserGrbl software to connect and control their laser engraving machines. Once the desired laser engraving software is opened, users can follow the instructions to connect the equipment and control the Nano accordingly.

Within the laser engraving software, creators have the flexibility to adjust various parameters to achieve the desired engraving effect, including power, speed, depth, etc. Longer suggests conducting some simple engraving tests before adjusting the parameters to understand the impact of each parameter and find the optimal combination. Below are the carving and cutting

parameters for some materials:

Carving Parameters:

- Tden Wood: 10000; 80
- Hardwood: 10000; 100
- Alumina: 100; 100
- Leather: 24000; 35
- Denim: 11000; 25
- Wood: 15000; 90
- Pottery: 2000; 100
- Rock: 14000; 100
- Stainless Steel: 1000; 100
- Paper: 6000; 15

Cutting Parameters:

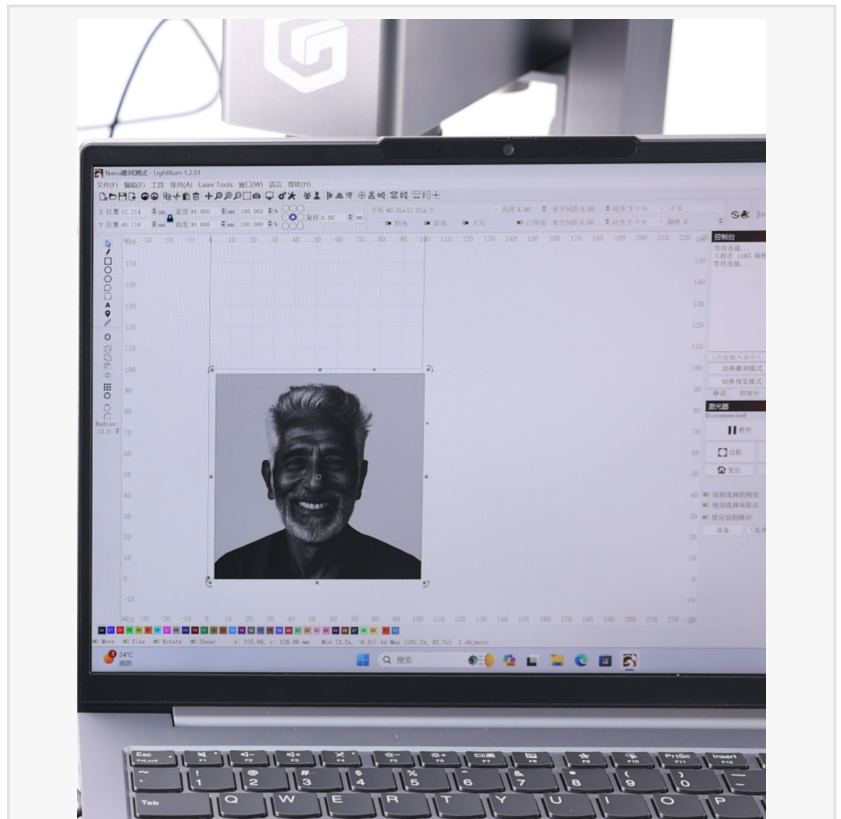
- Linden Wood 3mm: 300; 100
- Linden Wood 5mm: 150; 100
- Bubble Tung Wood 8mm: 50; 100
- Leather: 1300; 100
- Denim: 600; 100
- Paper: 3000; 100

Before commencing carving, creators can manually adjust the focal length, position the carving items, adjust the height of the electric bracket, and measure with the range ruler to ensure the distance between the bottom of the field mirror and the object's surface is 150mm. Creators can also focus on the red light, position the carved objects, and enter preview mode through the app or PC

application to adjust the bracket's height. When the two laser points synthesize a focal point to complete the ranging, creators can commence carving. It is essential to note the importance of using protective equipment, such as goggles and protective covers, to ensure safety when using the laser engraving machine. Creators should also remain vigilant of the equipment's running state and be prepared to halt operations to address any unexpected issues.

Longer hope this guide will assist creators in utilizing the Nano and enjoying a high-quality carving experience.

Nano is priced at \$299 for the 6W version and \$499 for the 12W version on Kickstarter. [Click here](#)



The Longer Nano is connected to laser engraving software



Longer Nano multi-material engraving

to learn more: <https://kck.st/3VDNklI>

longer

Shenzhen Longer Technology

+1 888-575-9099

[email us here](#)

Visit us on social media:

[Facebook](#)

[Twitter](#)

[Instagram](#)

[YouTube](#)

[TikTok](#)

This press release can be viewed online at: <https://www.einpresswire.com/article/699066711>

EIN Presswire's priority is source transparency. We do not allow opaque clients, and our editors try to be careful about weeding out false and misleading content. As a user, if you see something we have missed, please do bring it to our attention. Your help is welcome. EIN Presswire, Everyone's Internet News Presswire™, tries to define some of the boundaries that are reasonable in today's world. Please see our Editorial Guidelines for more information.

© 1995-2024 Newsmatics Inc. All Right Reserved.