

# The Latitude Edge Cable SRL-P Delivers Increased Efficiency for Workers at Height

*Advanced engineering and Class 2 versatility make the new Latitude Edge ideal for use on a wide range of job sites*



CONCORD, NC, UNITED STATES , April 23, 2024 /EINPresswire.com/ --

Introducing the reimaged Latitude Edge 8' Cable SRL-P, designed and engineered exclusively by the experts at Safewaze. This personal SRL is built entirely around efficiency and engineered to keep workers safer and more comfortable.

“

The exceptional engineering team at Safewaze tackled every challenge through dozens of product iterations”

*Clarke Jewell, Engineering Manager*

With an actual arrest distance under 83”, the Latitude Edge cable SRL-P has the lowest clearance requirement for Class 2 use compared to similar models. This lower arrest distance gives workers greater freedom of use in extreme leading-edge environments from construction and general industry to manufacturing and utilities.

The Latitude Edge Cable device is one of the lightest Class 2 SRLs of its kind on the market, designed with a compact

shock pack and frameless, thinner housing. This reduction in weight improves ergonomics to increase comfort and reduce worker fatigue.

Dual models of the Latitude Edge include an exclusive dorsal attachment bracket with a separator feature to keep the SRL-Ps from overlapping, and all models have a harness restraint strap to reduce movement of the energy absorber. Other critical features include a 360/180° attachment point and smooth side payout plus the Latitude Edge is RFID equipped and serviceable through certified repair facilities.

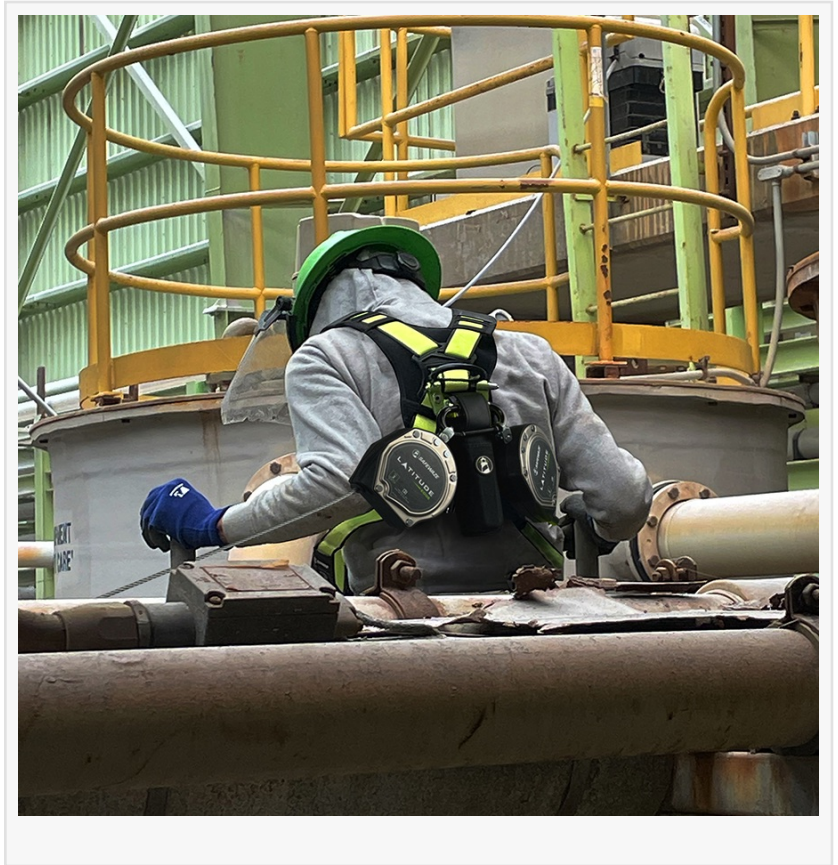
“The exceptional engineering team at Safewaze tackled every challenge through dozens of product iterations,” says Clarke Jewell, Engineering Manager. “The team delivered a lightweight, yet robust personal SRL designed with the end user’s needs in mind from the very start.”

The [new Latitude Edge 8' Cable SRL-P](#) is available through key distributor partners. To find the Latitude Edge near you, or any of our other [self-retracting lifelines](#), contact our responsive

Customer Service team at 800-230-0319 or [info@safewaze](mailto:info@safewaze).

#### About Safewaze:

Since 1994, Safewaze has been on a mission to save lives and livelihoods. As fall protection's most responsive partner, we provide quick and flexible solutions for fall arrest, rescue and confined space needs. With a 100,000 square foot facility in North Carolina and a growing, passionate team, we ensure workers are trained and protected by the best in modern fall protection. From anchors and harnesses to lifelines and lanyards, we deliver exactly what you need, exactly when you need it. <http://safewaze.com>



Jill Alexander  
Canopy Brands  
+1 980-781-1914  
[email us here](#)

Visit us on social media:

[Facebook](#)  
[LinkedIn](#)  
[YouTube](#)

---

This press release can be viewed online at: <https://www.einpresswire.com/article/704166791>

EIN Presswire's priority is source transparency. We do not allow opaque clients, and our editors try to be careful about weeding out false and misleading content. As a user, if you see something we have missed, please do bring it to our attention. Your help is welcome. EIN Presswire, Everyone's Internet News Presswire™, tries to define some of the boundaries that are reasonable in today's world. Please see our Editorial Guidelines for more information.

© 1995-2024 Newsmatics Inc. All Right Reserved.