

The Quarter Smith Unveils the Process of Appraising Fine Jewelry

NEW ORLEANS, LOUISIANA, UNITED STATES, April 25, 2024

[/EINPresswire.com/](#) -- [The Quarter Smith](#), located in the heart of the French Quarter in New Orleans, Louisiana, has long established itself as a leader in the fine jewelry market, particularly in the appraisal and purchasing of precious items. Understanding the appraisal process can often seem daunting to those looking to sell or value their fine jewelry. To demystify this process, The Quarter Smith outlines what customers can expect when they bring their valuables for appraisal.

Step-by-Step Guide to Jewelry Appraisal

The appraisal process at The Quarter Smith is meticulous and transparent, ensuring that all clients receive the most accurate and competitive prices for their jewelry. [Ken Bowers](#), owner of The Quarter Smith, emphasizes the importance of a thorough evaluation, stating, "Each piece of jewelry tells a story, and our job is to read that story through our comprehensive appraisal process."



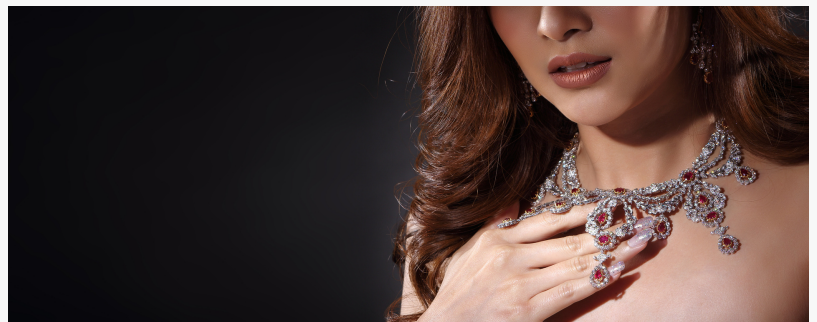
Trust and expertise are the foundations of our service."

Ken Bowers

Initial Examination: When jewelry is brought in for appraisal, it undergoes a detailed visual inspection using state-of-the-art tools. This initial check is to assess the

physical condition of the item and identify any marks, hallmarks, or signatures that might affect its value.

Testing the Metal: The type of metal – be it gold, silver, platinum, or palladium – is tested using precise techniques. For gold, several tests are conducted to determine purity levels, ranging from



10k to 24k. Silver items are tested for grades such as 800 silver, 900 coin silver, and 925 sterling silver.

Gemstone Evaluation: If the jewelry contains gemstones, each is carefully examined using gemological tools. Factors such as carat weight, cut, color, and clarity are assessed, as these significantly influence the overall value of the piece.

Market Analysis: Current market trends and prices for precious metals and gemstones are analyzed to ensure the most current value is given. This step is crucial as it aligns the item's valuation with what is attainable on today's market.

Report Generation: After the assessment, a detailed report is provided. This report includes an in-depth description of the item, the tests performed, the findings of each test, and the estimated market value. This transparency helps clients understand the value of their items and provides a trusted document for insurance or resale purposes.

Commitment to Excellence

The Quarter Smith takes pride in offering professional and knowledgeable services, backed by years of experience in the jewelry industry. "Trust and expertise are the foundations of our service. We ensure that every client leaves our store with a clear understanding of the value of their jewelry and the options available to them," says Ken Bowers.

Clients looking to appraise their jewelry can visit The Quarter Smith to experience firsthand the professional and meticulous service that has made the store a landmark in New Orleans for fine jewelry dealings.

Morgan Thomas
Rhino Digital, LLC
+1 504-875-5036
[email us here](#)

This press release can be viewed online at: <https://www.einpresswire.com/article/706570731>

EIN Presswire's priority is source transparency. We do not allow opaque clients, and our editors try to be careful about weeding out false and misleading content. As a user, if you see something we have missed, please do bring it to our attention. Your help is welcome. EIN Presswire, Everyone's Internet News Presswire™, tries to define some of the boundaries that are reasonable in today's world. Please see our Editorial Guidelines for more information.

© 1995-2024 Newsmatics Inc. All Right Reserved.