

# Dennis Injury Law Opens Lexington, Kentucky Office

*Dennis Injury Law is expanding. Founder Garrett Dennis has announced the firm is opening an office at 710 E. Main St., Lexington, KY 40502.*

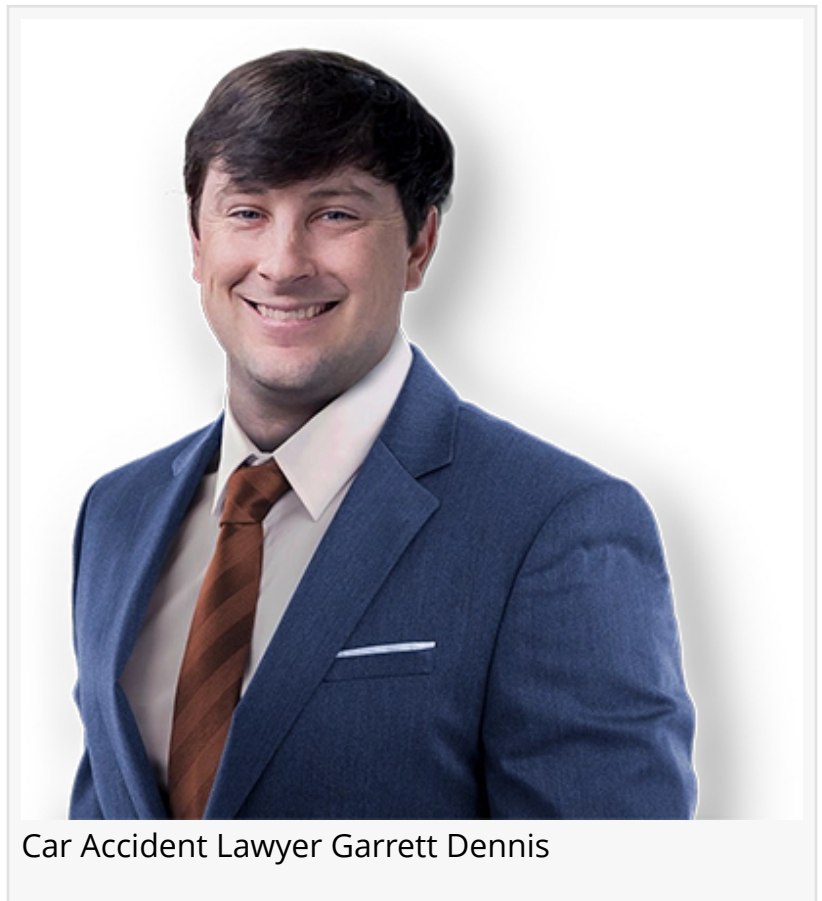
LEXINGTON, KENTUCKY, USA, June 20, 2024 /EINPresswire.com/ -- Dennis Injury Law, a prominent name in the field of personal injury law, has announced the grand opening of its new office in Lexington, Kentucky. Located at 710 E. Main St., Lexington, KY 40502, this expansion marks a significant milestone for the firm as it continues to grow its presence and serve clients across the Commonwealth.

Founded on the principles of compassion, expertise, and dedication, Dennis Injury Law has built a strong reputation for advocating on behalf of individuals who have suffered due to the negligence or wrongdoing of others. With a track record of successful cases and satisfied clients, the firm has established itself as a trusted ally in navigating the complexities of personal injury claims.

## A Strategic Location for Enhanced Accessibility

The decision to open an office in Lexington underscores Dennis Injury Law's commitment to accessibility and convenience for clients in central Kentucky. Situated in the heart of Lexington, the new office provides a centralized location that is easily accessible from surrounding areas, offering a welcoming environment where clients can receive personalized attention and legal counsel.

"Expanding into Lexington is a natural progression for us," said Garrett Dennis, founder and managing partner of Dennis Injury Law. "We are excited to bring our firm's dedication to justice



Car Accident Lawyer Garrett Dennis

and client advocacy to the Lexington community. Our goal is to provide comprehensive support to individuals who are facing challenging circumstances due to personal injuries."

### Comprehensive Legal Services

At the new Lexington office, Dennis Injury Law will continue to offer its full range of legal services, including representation in cases involving:

**Car Accidents:** Advocating for victims of negligent driving and seeking rightful compensation for injuries sustained in collisions.

**Slip and Fall Injuries:** Holding property owners accountable for unsafe conditions that lead to slip and fall accidents.

The firm's attorneys are known for their proactive approach to litigation, thorough case preparation, and commitment to securing favorable outcomes for their clients. With decades of combined experience, the legal team at Dennis Injury Law stands ready to provide compassionate guidance and aggressive representation throughout the legal process.

### Looking Ahead

As Dennis Injury Law celebrates the opening of its new Lexington office, the firm remains focused on its mission to provide exceptional legal services and uphold the rights of injured individuals across Kentucky. The expansion into Lexington represents a new chapter in the firm's growth, driven by a steadfast dedication to justice and client advocacy.

For more information about Dennis Injury Law's services or to schedule a consultation at their new Lexington office, please visit [www.dennisinjurylaw.com](http://www.dennisinjurylaw.com) or contact them directly at (859) 433-7779.

In conclusion, the opening of Dennis Injury Law's new office in Lexington marks an important milestone for the firm, reinforcing its commitment to serving clients with integrity, compassion, and unwavering dedication to achieving justice.

Garrett Dennis  
Dennis Injury Law  
+1 859-433-7779  
[email us here](#)

---

This press release can be viewed online at: <https://www.einpresswire.com/article/721523103>

EIN Presswire's priority is source transparency. We do not allow opaque clients, and our editors try to be careful about weeding out false and misleading content. As a user, if you see something we have missed, please do bring it to our attention. Your help is welcome. EIN Presswire, Everyone's Internet News Presswire™, tries to define some of the boundaries that are reasonable in today's world. Please see our Editorial Guidelines for more information.

