

Perry Lieber Revolutionizes Home Construction Management

Innovating the Future of Home Construction with Unmatched Expertise and Commitment

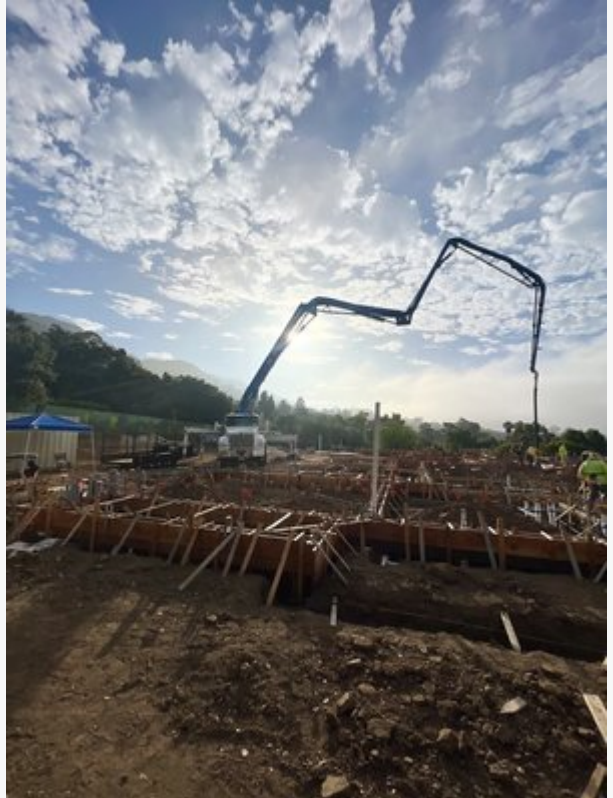
SANTA BARBARA, CALIFORNIA, UNITED STATES, August 8, 2024

/EINPresswire.com/ -- [Perry Lieber](#) is setting new benchmarks in the home construction management industry. With a focus on innovation, efficiency, and unparalleled client satisfaction, Lieber's approach to home construction is transforming how projects are managed from inception to completion.

Industry-Leading Expertise

Perry Lieber brings a wealth of experience and knowledge to the table. With a background in both construction and management, he combines technical proficiency with strategic oversight, ensuring that each project is not only built to perfection but also managed with precision. His expertise spans various types of residential projects, from custom homes to large-scale developments, making him a versatile and invaluable asset to any construction endeavor.

Innovative Management Techniques



One of the key differentiators of [Perry Lieber Santa Barbara](#) approach is his implementation of cutting-edge management techniques. By leveraging the latest technology and project management software, Lieber ensures that every phase of construction is meticulously planned and executed. This includes real-time tracking of project progress, efficient resource allocation, and proactive problem-solving. His commitment to staying ahead of industry trends means that clients benefit from the most advanced and efficient construction processes available.

Commitment to Quality and Sustainability

Quality and sustainability are at the forefront of Perry Lieber's construction philosophy. He understands that building a home is not just about creating a structure, but about crafting a space that will stand the test of time. Lieber's projects adhere to the highest standards of quality, ensuring that every detail is executed with precision and care. Furthermore, he is dedicated to incorporating sustainable practices and materials, reducing the environmental impact of construction and promoting long-term sustainability.

Client-Centric Approach

At the heart of Perry Lieber's success is his unwavering commitment to client satisfaction. He believes that the construction process should be as seamless and stress-free as possible for clients. To achieve this, Lieber maintains open and transparent communication throughout the project, keeping clients informed and involved every step of the way. His proactive approach to addressing concerns and adapting to client needs has earned him a reputation for exceptional customer service.

Streamlining the Construction Process

[Perry Lieber Construction](#)'s methodology includes streamlining the construction process to eliminate inefficiencies and reduce timelines. By employing a comprehensive project management framework, he ensures that every task is completed on schedule and within budget. This not only accelerates the construction timeline but also minimizes costs and maximizes value for clients.

A Vision for the Future

Looking ahead, Perry Lieber is poised to continue leading the way in home construction management. His vision for the future includes expanding the use of smart home technologies, enhancing sustainability efforts, and continuing to refine his management practices to better serve clients. With a focus on innovation and a dedication to excellence, Lieber is set to shape the future of the industry.

Conclusion

Perry Lieber's impact on home construction management is undeniable. His blend of expertise, innovative techniques, commitment to quality, and client-centric approach sets a new standard for the industry. As he continues to push the boundaries of what is possible in home construction, clients can trust that their projects are in the hands of a true professional dedicated to delivering outstanding results.

For more information on Perry Lieber's home construction management services, please visit [\[www.perryliebertventura.com\]](http://www.perryliebertventura.com)

Perry Lieber
Montecito Building
+1 8059265557
build@montecitobuilding.com
Visit us on social media:
[X](#)
[LinkedIn](#)

This press release can be viewed online at: <https://www.einpresswire.com/article/733900958>

EIN Presswire's priority is source transparency. We do not allow opaque clients, and our editors try to be careful about weeding out false and misleading content. As a user, if you see something we have missed, please do bring it to our attention. Your help is welcome. EIN Presswire, Everyone's Internet News Presswire™, tries to define some of the boundaries that are reasonable in today's world. Please see our Editorial Guidelines for more information.

© 1995-2024 Newsmatics Inc. All Right Reserved.