

# NATIONALLY TELEVISED CEREMONY IN CAPITAL WELCOMES MEMORIAL BY AMERICA'S MICHELANGELO

*Known as America's Michelangelo, sculptor Sabin Howard dedicated 9 years to creating and sculpting A Soldier's Journey, the sculptural heart of the WWI Memorial*

KENT, CONNECTICUT, UNITED STATES, August 15, 2024 /EINPresswire.com/ -- Widely known as America's Michelangelo, master sculptor [Sabin Howard](#) dedicated nine years of his life to designing, creating, and sculpting A Soldier's Journey, the sculptural heart of the new National WWI Memorial being installed right now in Washington, DC.



Sabin Howard in front of his sculpture A Soldier's Journey

Howard entered the global design competition for the National WWI Memorial in 2015 and won the competition in January, 2016, with his partner architect Joe Weishaar. Weishaar renovated Pershing Park, an urban park outside of the famed Willard Hotel. Pershing Park had fallen into disrepair.

“

WWI marks the transformation of our world into the modern era of alienation, isolation. I intend my art to remind us of the interconnection of humanity and of the divine order which informs our world.”

*Sabin Howard*

Howard set forth to create a fitting tribute to the 4.7 million people who served in the Great War and the more than 116,000 who died in Europe. Vehemently anti-war, Howard intended to make a memorial that did not glorify war and its devastation, but that honored the courage and sacrifice of veterans and the heavy toll of war paid by their families.

The resulting 38 figure, 58' long, 10' high bronze relief pays homage to the true valor of warriors who travel abroad in service to our country and its ideals of liberty and equality.

Howard's poignant relief is a kind of movie-in-bronze from left to right, showing a doughboy as he takes leave of his family, heeds the call to arms, enters the madness of battle, suffers the cost of war, and then returns home, victorious but changed forever.

As Howard told Russ Roberts on the popular [Econtalk](#) podcast, "It's a story that would be understandable universally, the story of a father, and an allegory of the United States. It follows the idea of the hero's journey that Joseph Campbell wrote about...It's an allegory for the change in our world..."

Howard and his team, including sculptor Charlie Mostow, finished sculpting the magnificent relief in January, 2024. They traveled to the foundry in the UK for the final casting of the clay figures into bronze.

Howard also has engaged in a publicity campaign to inform the American people of the forthcoming monument, which is sculpted to level of High Renaissance art, and which embodies the ideals of intertwined humanity and the uplift of the human spirit. Howard has spoken with such notables as [Victor Davis Hanson](#) and Mike Rowe.

Now the 25-ton bronze sculpture is being welded into place in Washington, DC, 150 yards from the White House. Howard will shortly be on site to apply the final patina.

All this is in preparation for the candle-lit Illumination Ceremony, which will be held on September 13, 2024 at 6:45 pm. This event honoring veterans and inaugurating the stunning new National WWI Memorial will be live-streamed and covered by national television. A reverent array of dignitaries, celebrities, and veterans will be on hand to witness the event.



Sabin Howard's Battle Scene from A Soldier's Journey



Master Sculptor Sabin Howard in his studio

Rebecca DeSimone, Esquire  
Sabin Howard Sculpture LLC  
rdrosebud@gmail.com

Visit us on social media:

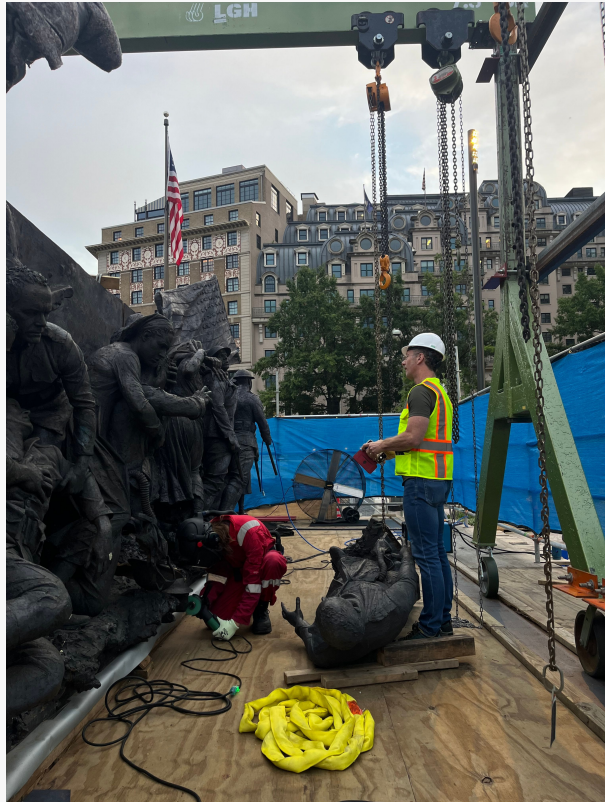
X

LinkedIn

Instagram

YouTube

Other



Master Sculptor Sabin Howard onsite with A Soldier's Journey



This press release can be viewed online at: <https://www.einpresswire.com/article/735750427>

EIN Presswire's priority is source transparency. We do not allow opaque clients, and our editors try to be careful about weeding out false and misleading content. As a user, if you see something we have missed, please do bring it to our attention. Your help is welcome. EIN Presswire, Everyone's Internet News Presswire™, tries to define some of the boundaries that are reasonable

in today's world. Please see our Editorial Guidelines for more information.

© 1995-2024 Newsmatics Inc. All Right Reserved.