

Showtime Watch Integrates Advanced Security with Qualcomm Trusted Execution Environment in Latest Update

Showtime Watch Integrates Advanced Security with Qualcomm Trusted Execution Environment in Latest Update

SINGAPORE, August 23, 2024 /EINPresswire.com/ -- [Showtime Watch](#), in its latest [community call](#), has announced the incorporation of advanced security technologies, including the Qualcomm Snapdragon W5+ chip with Trusted Execution Environment (TEE). This integration marks a significant leap forward in enhancing the security and overall user experience of the device, reinforcing Showtime Watch's commitment to delivering a smartwatch that not only excels in performance but also sets new benchmarks in digital security.



Showtime Watch is currently priced at 3 \$SOL.

Understanding Trusted Execution Environment (TEE) and TrustZone Technology

The Trusted Execution Environment (TEE) is a secure area within a device's main processor, designed to protect sensitive data and operations, such as encryption and user authentication, from unauthorized access and tampering. TEE achieves this by creating an isolated environment where critical tasks can be executed securely, separate from the rest of the device's operations.

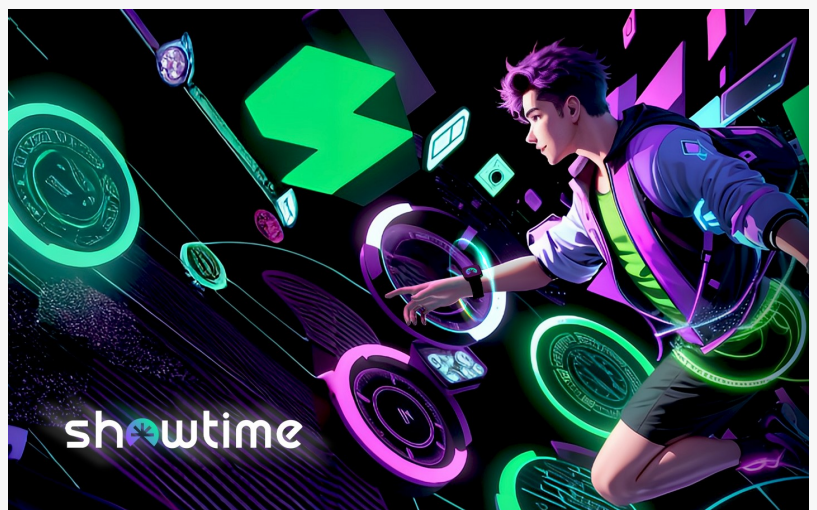
At the core of TEE is ARM's TrustZone technology, which provides hardware-level security by dividing the processor into two distinct worlds: the secure world and the normal world. The secure world handles sensitive tasks like financial transactions and biometric data processing, while the normal world runs everyday applications. This separation ensures that even if the normal world is compromised by malware or other security threats, the secure world remains unaffected, safeguarding critical operations and sensitive data.

Key Features of Qualcomm TEE
Qualcomm's TEE offers several key security features that enhance device protection:

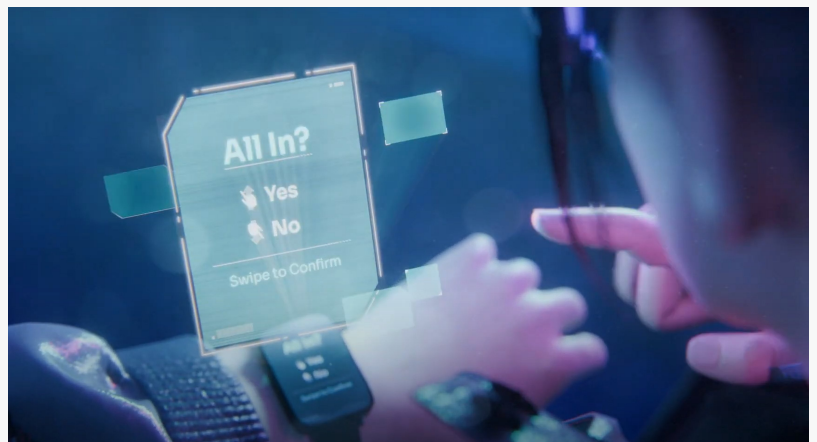
1. Isolation: TEE ensures that the secure world is completely isolated from the normal world, preventing unauthorized access to sensitive information and operations.
2. Encryption: It provides robust encryption capabilities, securing data both in storage and during transmission.
3. Secure Boot: Qualcomm TEE supports a secure boot process, ensuring that the device boots up using only trusted software, thus preventing the loading of malware or unauthorized software during startup.
4. Secure User Interface: TEE enables a secure user interface, ensuring that sensitive operations, like entering passwords or authorizing payments, are securely handled and cannot be intercepted by malicious software.

Showtime Watch and Qualcomm Snapdragon W5+ Integration
The inclusion of TEE in Showtime Watch is crucial for several reasons. Firstly, it significantly enhances the security of the Seed Vault Wallet, ensuring that digital assets, such as cryptocurrencies and NFTs, are protected with the highest level of security. Additionally, TEE enables secure AI processing, allowing the Showtime Watch to offer personalized and secure services without compromising user privacy.

As smartwatches continue to evolve beyond traditional functions, handling tasks such as digital asset management and access control to Web-3 blockchain information; the demand for reliable



Showtime, the ultimate AI companion on your wrist



Showtime Watch - Your AI & Web3 Companion



Hetaro Labs Unveils Showtime Watch Figure

As smartwatches continue to evolve beyond traditional functions, handling tasks such as digital asset management and access control to Web-3 blockchain information; the demand for reliable

security measures has grown. The incorporation of TEE into the Showtime Watch addresses these needs by providing a secure environment for these activities, helping to ensure the safety and privacy of users' data.

Showtime Watch: A Smart Investment in Security

With the integration of Qualcomm's Trusted Execution Environment, Showtime Watch not only offers advanced features and top-tier performance but also sets a new standard in smartwatch security. This makes Showtime Watch a compelling choice for those who prioritize both innovation and security in their wearable technology.

Hetaro Labs Communication Department

Hetaro Labs

+852 6830 6283

[email us here](#)

Visit us on social media:

[X](#)

[LinkedIn](#)

[Instagram](#)

[YouTube](#)

This press release can be viewed online at: <https://www.einpresswire.com/article/737659899>

EIN Presswire's priority is source transparency. We do not allow opaque clients, and our editors try to be careful about weeding out false and misleading content. As a user, if you see something we have missed, please do bring it to our attention. Your help is welcome. EIN Presswire, Everyone's Internet News Presswire™, tries to define some of the boundaries that are reasonable in today's world. Please see our Editorial Guidelines for more information.

© 1995-2024 Newsmatics Inc. All Right Reserved.