

Williams Tree Company Completes Successful Emergency Storm Response for City of Bloomington, IN, After Windstorm in July

Williams Tree Company completed a major storm cleanup in Bloomington, IN, in July 2024, removing debris and restoring safety after a devastating windstorm.

MARTINSVILLE, IN, UNITED STATES, September 5, 2024 /EINPresswire.com/ -- Williams Tree Company, a trusted provider of [tree care](#) and [emergency storm response services](#), has successfully completed a major storm recovery operation in Bloomington, Indiana, following a destructive windstorm that struck the city in early July 2024. Contracted by the City of Bloomington to manage tree and debris removal across the community, Williams Tree Company deployed its skilled crews to work tirelessly in the aftermath of the storm, which left widespread damage in its wake.

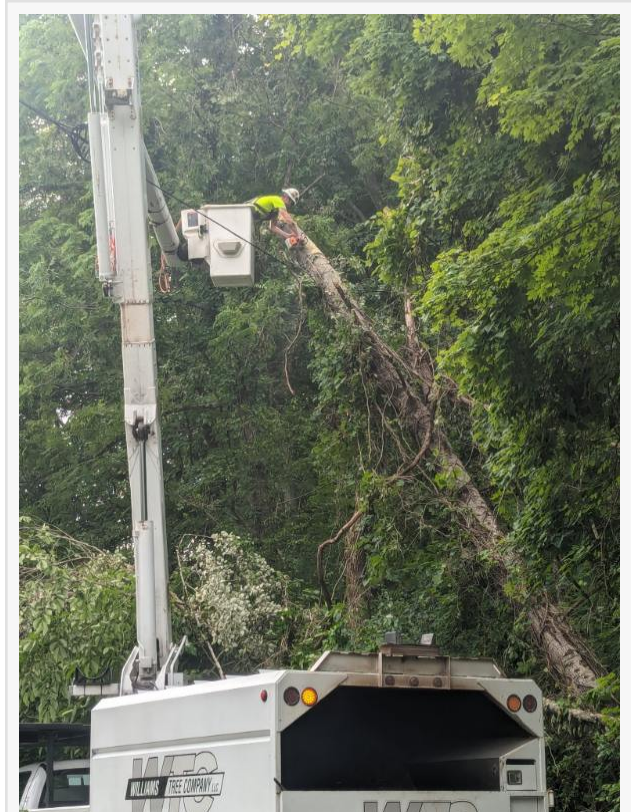
A Critical Response to Devastating Storm Damage

On July 6, 2024, a powerful windstorm swept through Bloomington, causing significant damage to trees, homes, and infrastructure. Large trees were uprooted, branches littered streets, and power lines were knocked down, creating hazardous conditions for residents and city officials alike. Recognizing the scale of the damage and the urgency of the situation, the City of Bloomington contracted Williams Tree Company to lead the cleanup and recovery efforts.

“Our crews worked non-stop in the wake of the storm,” said Brian Burns of Williams Tree Company. “We immediately began coordinating with local authorities and mobilizing our teams to ensure that debris was cleared as quickly and safely as possible. It was a massive undertaking, but we were determined to help restore normalcy to the community.”

Coordinated Citywide Cleanup Efforts

Starting on July 8, 2024, and continuing for five weeks, Williams Tree Company executed a



Storm crews at work

citywide debris removal operation, focusing on clearing tree and vegetation-related debris that residents had gathered into manageable piles. In partnership with the City of Bloomington, crews worked diligently to remove debris while maintaining safety and accessibility for residents. Homeowners were encouraged to place their debris piles near the road, but outside of right-of-ways, to allow for efficient removal.

In addition to curbside pickup, a public drop-off site for vegetation debris was established at the parking lots adjacent to the ball fields at Lower Cascades Park. The site operated daily from 9 a.m. to 2 p.m., offering Bloomington residents a convenient way to dispose of storm-related debris. Williams Tree Company collaborated with Bloomington Parks and Recreation to manage the drop-off site, ensuring that residents had ample opportunity to clear their properties of storm debris.

“Our partnership with the City of Bloomington was key to making this operation a success,” Brian Burns continued. “We were able to offer multiple avenues for debris removal, whether through our curbside collection service or the public drop-off site, which helped speed up the recovery process for the entire community.”

“

We understand the stress and uncertainty that comes with severe weather events-- Our goal is to be there for our communities when they need us most.”

Sean Murphy

Supporting Electrical Providers and Critical Infrastructure
In addition to residential tree debris removal, Williams Tree Company also played a vital role in supporting the restoration of critical infrastructure in Bloomington. The storm caused significant damage to power lines and electrical systems across the city, leading to outages for many residents. Williams Tree Company worked closely with local utility providers to clear trees and branches that were impeding power restoration efforts.

Beyond assisting electrical providers, Williams Tree Company’s crews also worked with local public works and transportation departments to clear blocked roads and ensure that essential services could continue operating without disruption. By removing downed trees from roadways and public spaces, the company helped restore normal traffic flow and reduced the risk of further damage or injury.



Crews clean up in the aftermath of the storm

A Tireless Effort

Throughout the two-week recovery period, Williams Tree Company's crews worked long hours in challenging conditions to address the widespread damage caused by the windstorm. Crews were deployed across the city, from residential neighborhoods to commercial areas, ensuring that no part of the community was left unattended.

"Our team has been going non-stop over the past 48 hours after the extreme weather in Bloomington," the company shared on social media during the height of the cleanup. "We've pushed crews out to support residential homeowners, electrical providers, and county infrastructure all across the community. Extremely proud of our team for their hard work and willingness to tackle any job."



WTC Logo

This dedication and determination were critical in ensuring that Bloomington's recovery from the storm progressed as quickly as possible. Williams Tree Company's experience and expertise in emergency storm response allowed the company to adapt to the evolving situation and provide effective solutions in real time.

A Proven Partner in Emergency Response

The Bloomington storm response is just the latest example of Williams Tree Company's commitment to helping communities recover from natural disasters. With a long history of providing emergency tree services, the company has earned a reputation for its fast response times, professionalism, and ability to handle large-scale operations.

"We understand the stress and uncertainty that comes with severe weather events," said Sean Murphy. "Our goal is to be there for our communities when they need us most, providing expert services that help them recover and rebuild."

About Williams Tree Company

Williams Tree Company is a full-service tree care and removal company based in Paragon, Indiana. The company specializes in both routine and emergency services, including [tree removal](#), tree trimming, crown reduction, stump grinding, lot clearing, forestry mulching, and more. With a highly trained team of arborists and a commitment to safety, Williams Tree

Company serves homeowners, businesses, and municipalities across the region.

The company's extensive experience in emergency storm response has made it a trusted partner for cities and towns throughout Indiana. Williams Tree Company is dedicated to maintaining the health and safety of trees and landscapes, providing services that protect both property and the environment.

For more information about Williams Tree Company and its services, visit www.williamstreecompanyllc.com or contact 765-349-7673

Sean Murphy
Williams Tree Company
+1 7653901905

[email us here](#)

Visit us on social media:

[Facebook](#)

[LinkedIn](#)

This press release can be viewed online at: <https://www.einpresswire.com/article/740993353>

EIN Presswire's priority is source transparency. We do not allow opaque clients, and our editors try to be careful about weeding out false and misleading content. As a user, if you see something we have missed, please do bring it to our attention. Your help is welcome. EIN Presswire, Everyone's Internet News Presswire™, tries to define some of the boundaries that are reasonable in today's world. Please see our Editorial Guidelines for more information.

© 1995-2024 Newsmatics Inc. All Right Reserved.