

J&M Jewelry Introduces AI Jewelry Designer

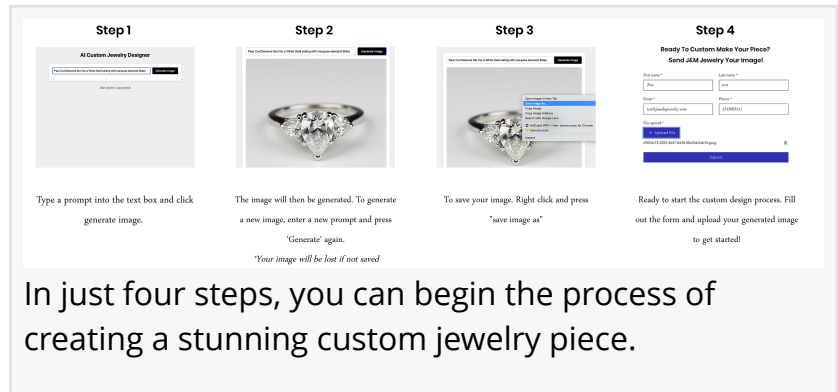
Discover J&M Jewelry's AI Jewelry Designer—turn descriptions into stunning custom designs instantly. Create, design, and wear your dream jewelry today!

THE WOODLANDS, TX, UNITED STATES,
September 19, 2024 /

EINPresswire.com/ -- [J&M Jewelry](#), a provider of [custom fine jewelry](#), has

announced the introduction of its [AI Jewelry Designer](#).

This technology aims to modify the custom jewelry design process for customers, potentially altering the traditional approach to jewelry design.



In just four steps, you can begin the process of creating a stunning custom jewelry piece.

The AI Jewelry Designer employs artificial intelligence algorithms to convert textual descriptions into digital designs for various jewelry pieces, including engagement rings, necklaces, and other fine jewelry items. This approach is intended to make the design process more creative to customers without prior design experience or technical knowledge in jewelry making.

“

AI Jewelry Designer, turning imagination into reality, making personalized jewelry creation as effortless as it is extraordinary.”

J&M Jewelry Team

The process begins with customers providing descriptions of their desired jewelry pieces. The AI system then interprets these descriptions and generates digital

renderings of the designs. These renderings are intended to serve as visual representations of the customers' ideas, potentially facilitating clearer communication between clients and jewelers.

Cory Moore, CEO of J&M Jewelry, provided insight into the next steps of the process: "Our team of jewelers will produce the physical piece based on the digital design."

The introduction of the AI Jewelry Designer represents one of J&M Jewelry's recent technological implementations in the fine jewelry industry. This tool is intended to facilitate the realization of customers' design concepts, potentially reducing the time and effort traditionally required in the custom jewelry design process.

J&M Jewelry reports that the AI Jewelry Designer is now available for customer use. The company

suggests that this technology might be particularly useful for customers who have specific design ideas but find it challenging to communicate them effectively or lack the technical skills to create detailed designs themselves.

While the long-term impact of AI in custom jewelry design remains to be seen, J&M Jewelry posits that tools like the AI Jewelry Designer may influence future trends in the industry. The company plans to continue developing and refining the technology based on customer feedback and usage patterns.

For additional information about J&M Jewelry and the AI Jewelry Designer, including details on how to access and use the tool, interested parties may visit www.jandmjewelry.com/ai-jewelry-designer. The website also provides examples of designs created using the AI tool and subsequently manufactured by J&M Jewelry's team of craftspeople.

Christi Cuesta
J&M Jewelry
+1 888-247-5668

[email us here](#)

Visit us on social media:

[Facebook](#)

[Instagram](#)

[LinkedIn](#)

[YouTube](#)

[Other](#)

This press release can be viewed online at: <https://www.einpresswire.com/article/744571961>

EIN Presswire's priority is source transparency. We do not allow opaque clients, and our editors try to be careful about weeding out false and misleading content. As a user, if you see something we have missed, please do bring it to our attention. Your help is welcome. EIN Presswire, Everyone's Internet News Presswire™, tries to define some of the boundaries that are reasonable in today's world. Please see our Editorial Guidelines for more information.

© 1995-2024 Newsmatics Inc. All Right Reserved.