

# QeBIM, Leading BIM Company Expands European Footprint with Dedicated Websites for the UK, Germany and the Netherlands

*QeBIM, a leading BIM company, expands its European presence with new dedicated websites for the UK, Germany, and the Netherlands, enhancing regional services.*

EDGWARE, LONDON, UNITED KINGDOM, September 30, 2024

/EINPresswire.com/ -- QeBIM, a global leader in [BIM services](#), is thrilled to announce the launch of three new exclusive websites tailored for the UK, Germany and the Netherlands. This

strategic move represents a key milestone in QeBIM's international expansion aimed at providing localized and industry-specific services to meet the growing demands of these dynamic markets.

“

Our European expansion is key to our global growth strategy. These exclusive sites will offer BIM services tailored to local standards, bringing us closer to clients across the regions”

*Jay Vaishnav - Chief Operating Officer*

With a comprehensive portfolio of Architectural Services, QeBIM is set to revolutionize the digital construction processes across Europe. These newly launched website will enable the architects, engineers, contractors and real estate firms in the UK, Germany and the Netherlands to access the world-class BIM solutions that cater to the unique needs and standards of their respective regions.

Meeting Localized Needs with Tailored [BIM Modeling Services](#)

Recognizing the importance of addressing the distinct regulatory, technical as well as the cultural differences across European markets, QeBIM's newly dedicated websites are designed to offer region-specific BIM services. Each site is equipped with customized content and localized experience. These websites are the reflection that our resources are well versed with the



building codes, regulations along with the industry practices of the UK, Germany and the Netherlands.

For instance, in the UK, where Building Information Modeling (BIM) Level 2 has become a government mandate for public projects, QeBIM's services will focus on helping construction professionals adhere to these requirements through advanced Clash Detection, Coordination, and Revit Family Creation. In Germany, where precision and engineering excellence are highly prioritized, QeBIM will emphasize Structural BIM services that support detailed structural analysis and design optimization. The Netherlands, a hub of sustainable and innovative architectural practices, will benefit from Scan to BIM and [Architectural BIM Services](#) that enhance restoration and renovation efforts by transforming point cloud data into highly accurate 3D models.

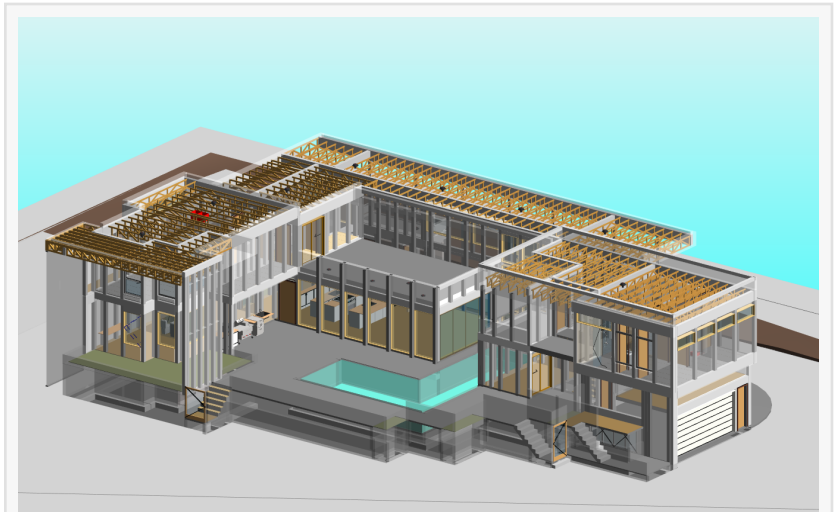
### Comprehensive Range of BIM Services

As a pioneering force in the BIM industry, QeBIM's European expansion will deliver the following key services across the three markets:

**Architectural BIM:** QeBIM provides cutting-edge solutions that allows architects and designers to streamline the design, planning and execution stages of their projects. By creating intelligent 3D models, clients can visualize every detail of a project right from spatial planning to interior design, ensuring more efficient project delivery and reduced errors during the construction.

**Structural BIM:** Offering detailed structural analysis, QeBIM's Structural BIM services allow for precise modeling and reinforcement planning thereby providing a robust foundation for any project. This service helps the construction teams to mitigate the risks and ensure the stability ultimately meeting the strict engineering standards in the process.

**MEP BIM:** One of the key challenges in the large-scale construction projects is the integration of mechanical, electrical, and plumbing systems. QeBIM's MEP BIM solutions ensure the seamless



Architectural, Structural and MEP Model for Multiple House



Architectural BIM Model for Hotel

coordination between these critical systems thereby enabling efficient installation and maintenance planning.

**Clash Detection and Coordination:** QeBIM's Clash Detection services identify and resolve the conflicts between architectural, structural and MEP systems before the construction begins. This service is crucial in avoiding costly delays, miscommunication and errors that often arise in complex projects while on-going construction.

**Revit Family Creation:** QeBIM's Revit Family Creation service is designed to provide clients with highly detailed and customizable digital components that can be incorporated into BIM models. This is especially valuable for manufacturers, contractors and architects who need precise, reusable 3D elements that align with their project needs.

**Scan to BIM:** As renovation and restoration projects continue to grow in demand, QeBIM's Scan to BIM service offers a powerful solution. By converting laser-scanned point cloud data into accurate 3D models, QeBIM helps clients to document and visualize the existing structures thereby making it easier to plan and execute renovation projects with unparalleled accuracy.

### Strengthening European Partnerships

By launching these exclusive websites for the European-specific market, QeBIM aims to enhance its partnerships with regional construction professionals, offering them not just the BIM services but a localized, collaborative approach. With increasing digitalization across Europe's construction sector, QeBIM understands the significance of offering customized solutions that meet specific regional requirements.

QeBIM's European clients will benefit from faster response times, better alignment with local regulations and the ability to collaborate more closely with the BIM experts who understand the intricacies of each market. Additionally, the localized websites will feature region-specific case studies, insights into local BIM regulations, and the ability to request customized consultations based on the project's location and scope.

### About QeBIM

QeBIM is a global leader in Building Information Modeling (BIM) services offering comprehensive solutions for the AEC industry. With a focus on delivering quality, efficiency, and innovation, QeBIM's services span the entire project lifecycle, from design and planning to execution and maintenance. Known for its expertise in CAD, BIM, Renderings and other AEC services, QeBIM has become a trusted and reliable partner for the AEC professionals around the globe.

For more information, please visit the newly launched websites.

<https://www.qebimservices.co.uk/>

<https://www.qebimservices.de/>

<https://www.qebimservices.nl/>

Pushpa Sahu

QeBIM Services

+44 20 8638 5554

info@qebimservices.com

Visit us on social media:

[Facebook](#)

[X](#)

[LinkedIn](#)

[Instagram](#)

[YouTube](#)

[Other](#)

---

This press release can be viewed online at: <https://www.einpresswire.com/article/746716222>

EIN Presswire's priority is source transparency. We do not allow opaque clients, and our editors try to be careful about weeding out false and misleading content. As a user, if you see something we have missed, please do bring it to our attention. Your help is welcome. EIN Presswire, Everyone's Internet News Presswire™, tries to define some of the boundaries that are reasonable in today's world. Please see our Editorial Guidelines for more information.

© 1995-2024 Newsmatics Inc. All Right Reserved.