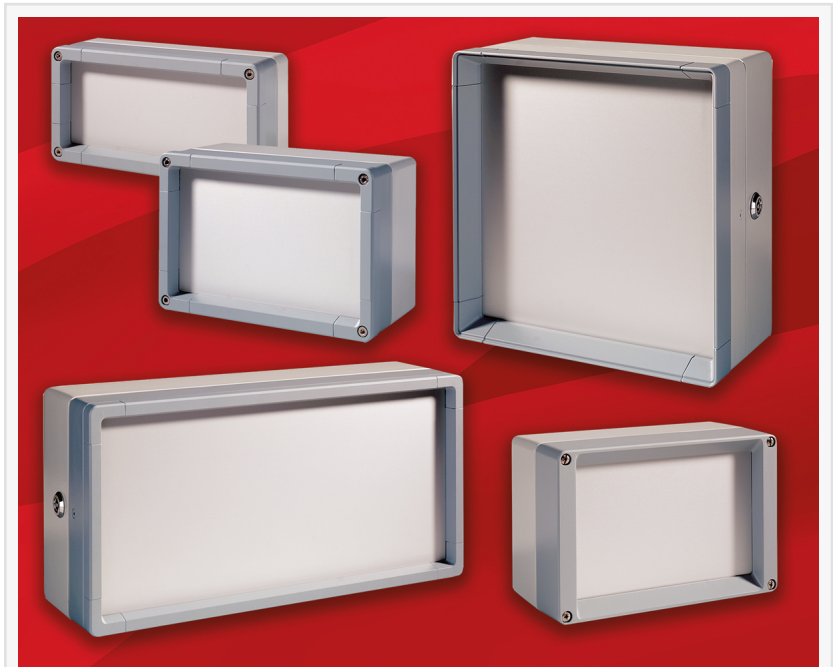


# ROLEC's aluFACE Diecast Command Enclosures Now In Six Versions

*ROLEC's robust and versatile aluFACE command enclosures for industrial electronics are now available in six versions.*

BRIDGEVILLE, PA, UNITED STATES, October 3, 2024 /EINPresswire.com/ -- These smart [IP 65/IP 66 diecast aluminum enclosures](#) provide a cost-effective solution for machine building, industrial control and display electronics in challenging locations.

Between them, the six different versions (KSE, KCE, KE, KTE, KVE and KVF) offer a choice of one-piece or two-piece lids, raised or flat frameworks, and either concealed or visible fixing screws.



ROLEC's aluFACE is an extensive range of diecast aluminum enclosures for control and command electronics.

External mountings (accessory) enable aluFACE to be fitted to walls or machines. The larger versions can be mounted on suspension arm systems such as ROLEC's modular profiPLUS, taraSMART and taraPLUS ranges.



ROLEC's aluFACE provides machine builders with a truly extensive range of housing options for their control electronics."

*Sean Bailey*

Single-channel mounting allows more space inside for components. The lid is recessed to protect keypads and controls. Different recess depths are available depending on the framework. One version – KTE – has two separate chambers which can be opened independently. All the enclosures have 0.12" silver anodized aluminum front plates.

Together, the six different versions comprise 65 different permutations. Sizes range from 4.72" x 4.72" x 3.15" to 12.60" x 25.20" x 6.04". The main enclosure body is diecast aluminum while the

frameworks comprise diecast zinc corner pieces and aluminum profiles. The standard color scheme is window gray RAL 7040 and light gray RAL 7035.

Accessories include external mountings, hinges, handles, a wraparound handle system, lever fasteners (with/without lock), collar-head fasteners, triangular fasteners, mounting plates and supporting rails.

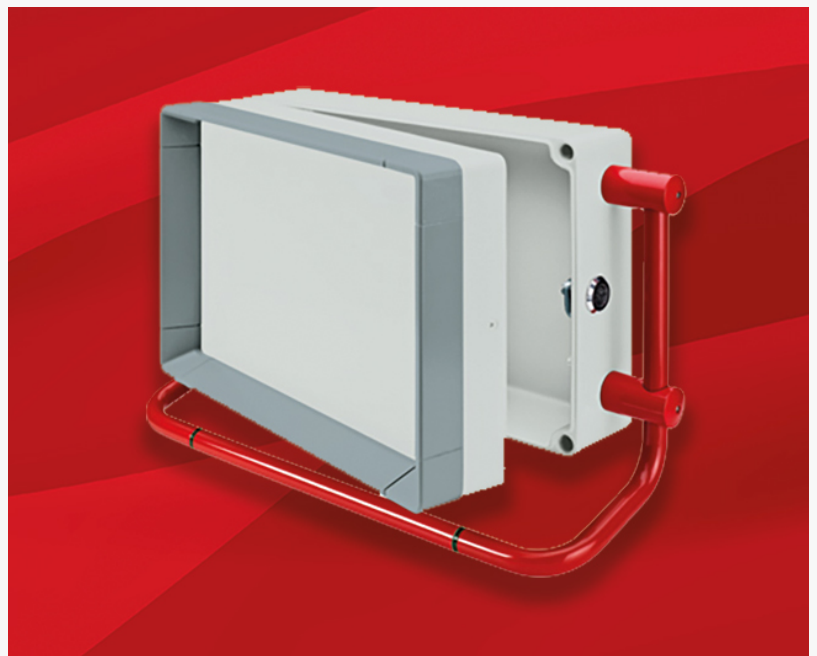
ROLEC can supply [aluFACE fully customized](#). Services include CNC machining, powder coating, wet painting, printing/engraving of legends and logos, RFI/EMI shielding, and assembly.

[View aluFACE enclosures range here >>](#)

Sean J Bailey  
ROLEC Enclosures Inc  
+1 888-658-5774  
[email us here](#)



The aluFACE series can be supplied fully customized to individual requirements.



Optional hinged sections and handle bars are available for aluFACE to suit the requirements of machine builders.

This press release can be viewed online at: <https://www.einpresswire.com/article/748694541>

EIN Presswire's priority is source transparency. We do not allow opaque clients, and our editors try to be careful about weeding out false and misleading content. As a user, if you see something we have missed, please do bring it to our attention. Your help is welcome. EIN Presswire, Everyone's Internet News Presswire™, tries to define some of the boundaries that are reasonable

in today's world. Please see our Editorial Guidelines for more information.

© 1995-2024 Newsmatics Inc. All Right Reserved.