

# Aspire Performance Improvement Launches Comprehensive Suite of Financial Advisory Regulatory Compliance Health Checks

*Aspire Performance Improvement Launches Suite of 17 Financial Advisory Reviews Powered by Aspire ID8 to Accelerate Gap Discovery and Compliance Action Planning*

LONDON, UNITED KINGDOM, October 8, 2024 /EINPresswire.com/ -- Aspire Performance Improvement Ltd, an experienced provider of management and regulatory consultancy, today announces the release of a comprehensive new range of Financial Advisory Health Check Services. This innovative suite of 17 diagnostic reviews is designed to help organizations operating in the financial services industry and their third-party providers to rapidly identify, address, and close compliance gaps in line with evolving regulatory frameworks. These health checks, powered by Aspire's advanced ID8 SAAS platform, leverage artificial intelligence (AI) capabilities to generate actionable compliance roadmaps in seconds, enabling organizations to establish strong governance practices and achieve regulatory peace of mind.

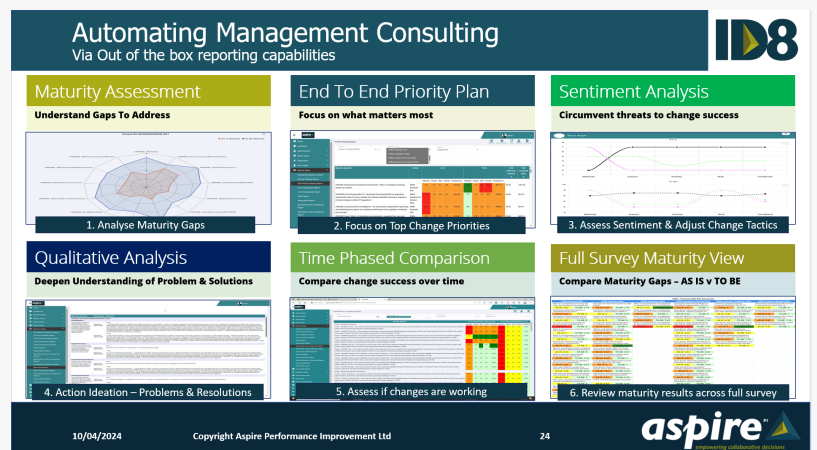
In today's complex and highly regulated financial landscape, organizations must continuously adapt to meet stringent compliance requirements across multiple domains. Aspire's new service offerings target key areas of operational resilience, sustainability, data protection, privacy, financial reporting, and risk management, ensuring that organizations are well-prepared to navigate the ever-changing regulatory environment.

## Comprehensive Financial Health Check Services

Aspire's 17 Financial Advisory Health Check services offer in-depth reviews across the most



Aspire Performance Improvement Ltd



Aspire ID8 - Automating Management Consulting

critical areas of regulatory and compliance demands. Each review provides organizations with clear insights into their current compliance status, identifying any gaps or risks, and delivering practical recommendations for improvement.

#### 1. Ops Resilience Health Check

This review assesses an organization's operational resilience, focusing on its ability to prevent, adapt, respond, and recover from operational disruptions. It evaluates business continuity plans, incident response protocols, and resilience frameworks to ensure critical services remain available during crises. By identifying weaknesses, this health check helps clients improve their operational readiness and minimize downtime during unexpected events.

#### 2. ESG (Environmental, Social, and Governance) Health Check

With increased investor scrutiny and regulatory focus on sustainability, this review helps organizations assess their ESG practices. The health check evaluates governance structures, environmental impact policies, and social responsibility initiatives, ensuring compliance with ESG reporting standards and providing guidance on how to improve overall sustainability performance.

#### 3. ESR (Environmental and Social Resilience) Health Check

This diagnostic evaluates how well organizations manage environmental and social risks in their operations and investments. It assesses the effectiveness of policies in mitigating risks related to climate change, biodiversity, and human rights, ensuring organizations operations are aligned with industry best practices and regulatory expectations.

#### 4. BCP (Business Continuity Planning) Health Check

This review focuses on an organization's business continuity planning processes. It evaluates the robustness of contingency planning, risk assessments, and disaster recovery procedures. The BCP Health Check helps organizations ensure they can maintain critical operations and services during unforeseen events and meet regulatory requirements for business continuity.

#### 5. IFRS Section 1 Health Check

This review evaluates an organization's compliance with International Financial Reporting Standards (IFRS), particularly in areas related to financial statement preparation and disclosure. It ensures that companies meet global reporting standards and are equipped to provide transparent, reliable financial information to stakeholders.

#### 6. IFRS Section 2 Health Check

Building on IFRS Section 1, this health check focuses on more complex areas of financial reporting, such as revenue recognition, leasing, and financial instruments. It identifies potential areas of non-compliance and helps organizations address these issues to meet both internal and external reporting obligations.

#### 7. ISO Compliance Health Check

This diagnostic evaluates an organization's compliance with relevant ISO (International Organization for Standardization) standards, covering areas such as quality management (ISO 9001), environmental management (ISO 14001), and information security (ISO 27001). It helps organizations streamline operations, reduce risks, and enhance governance practices through standardized procedures.

#### 8. EBA (European Banking Authority) Compliance Health Check

This review assesses compliance with EBA regulatory requirements, including those related to banking supervision, capital requirements, and anti-money laundering. It helps banks and financial institutions ensure they meet the regulatory standards set forth by the EBA, reducing the risk of penalties and enhancing governance frameworks.

#### 9. DORA (Digital Operational Resilience Act) Health Check

This diagnostic ensures that financial institutions and their third-party providers are compliant with the DORA framework. It focuses on evaluating operational resilience in the context of digital transformation, assessing how organizations mitigate cyber risks and maintain system integrity in the face of technological disruptions.

#### 10. Data Privacy Health Check

As data privacy regulations become increasingly stringent, this review helps organizations assess their data protection policies and procedures. It ensures compliance with both local and global regulations, such as the General Data Protection Regulation (GDPR) and the California Consumer Privacy Act (CCPA), while providing actionable recommendations to safeguard personal data.

#### 11. Data Protection Health Check

This review focuses on broader data protection measures beyond privacy laws, evaluating how organizations handle sensitive information, mitigate data breaches, and comply with regulatory data protection requirements. It helps clients strengthen their data security infrastructure and improve data governance practices.

#### 12. GDPR (General Data Protection Regulation) Health Check

This in-depth diagnostic evaluates an organization's compliance with GDPR, focusing on how personal data is collected, processed, stored, and shared. It identifies areas of non-compliance and provides organizations with practical steps to ensure they meet stringent GDPR requirements and avoid significant fines.

#### 13. CCPA (California Consumer Privacy Act) Health Check

Targeting organizations with operations in or serving California residents, this review assesses compliance with CCPA regulations. It ensures that companies meet the law's requirements on data collection and sharing while providing transparency and control to consumers over their personal data.

#### 14. GRI (Global Reporting Initiative) Health Check

This diagnostic evaluates an organization's sustainability reporting practices based on the GRI framework. It assesses the completeness and accuracy of sustainability disclosures, ensuring that organizations provide stakeholders with a clear picture of their environmental, social, and economic impact.

#### 15. TNFD (Taskforce on Nature-related Financial Disclosures) Health Check

This review focuses on organizations' preparedness for TNFD reporting, assessing how they manage nature-related risks and opportunities. It provides recommendations for integrating biodiversity and ecosystem considerations into financial decision-making processes.

#### 16. PAS 2050 Health Check

This diagnostic helps organizations evaluate their carbon footprint in line with PAS 2050 standards. It assesses how organizations measure and manage greenhouse gas emissions, providing actionable insights into reducing environmental impact and meeting sustainability targets.

#### 17. Sustainability Management Health Check

This comprehensive review focuses on an organization's overall sustainability management, assessing strategies, goals, and governance structures. It provides a holistic view of sustainability performance, helping organizations align their operations with global sustainability frameworks and regulatory demands.

#### Accelerating Compliance with Aspire ID8 SAAS and AI

At the heart of these health check services is the powerful Aspire ID8 SAAS solution, equipped with AI-driven capabilities to accelerate the identification of compliance gaps and regulatory challenges. Through real-time data analysis and automated insights, Aspire ID8 delivers actionable recommendations in seconds, enabling organizations to swiftly address compliance issues before they escalate into significant risks.

Aspire's AI technology ensures that action plans are not only generated quickly but are also tailored to the specific regulatory frameworks relevant to each client. This allows organizations to prioritize and implement corrective actions efficiently, reducing the time and cost associated with manual compliance reviews.

"Our goal is to empower organizations with the tools and insights they need to stay ahead of regulatory demands," said Robert Peopall, Managing Director of Aspire Performance Improvement Ltd. "With our comprehensive Financial Health Check services and the power of Aspire ID8 SAAS, we can help businesses uncover compliance gaps and generate actionable plans faster than ever before, ensuring high-quality governance and a solid compliance framework."

Aspire Performance Improvement Ltd's newly launched range of Financial Advisory Health Checks, combined with the cutting-edge capabilities of Aspire ID8 SAAS, offers organizations a

faster, more efficient path to regulatory compliance. From operational resilience to ESG, data protection, and financial reporting, Aspire's diagnostic reviews ensure that clients can confidently meet evolving regulatory challenges.

For more information or to schedule a Financial Advisory Health Check, visit [www.aspirepi.com](http://www.aspirepi.com) or contact Aspire Performance Improvement Ltd at [robertpeopall@aspirepi.com](mailto:robertpeopall@aspirepi.com).

#### About Aspire Performance Improvement Ltd

Aspire Performance Improvement Ltd is an experienced consulting firm specializing in regulatory compliance, portfolio management, and performance improvement. With a focus on helping organizations meet complex regulatory demands, Aspire delivers tailored solutions powered by advanced technology and deep industry expertise.

Robert Peopall

Aspire Performance Improvement Ltd

+ +44 7500 003594

[email us here](#)

Visit us on social media:

[LinkedIn](#)

---

This press release can be viewed online at: <https://www.einpresswire.com/article/749779705>

EIN Presswire's priority is source transparency. We do not allow opaque clients, and our editors try to be careful about weeding out false and misleading content. As a user, if you see something we have missed, please do bring it to our attention. Your help is welcome. EIN Presswire, Everyone's Internet News Presswire™, tries to define some of the boundaries that are reasonable in today's world. Please see our Editorial Guidelines for more information.

© 1995-2024 Newsmatics Inc. All Right Reserved.