

Williams Tree Company Sends 7 Crews to Florida and Georgia for Emergency Storm Response After Recent Hurricane

Williams Tree Company sent 7 crews to FL & GA for hurricane recovery, clearing trees, removing dangerous limbs, & partnering with FPL for power restoration.

MARTINSVILLE, IN, UNITED STATES, October 17, 2024 /EINPresswire.com/ -- In the wake of the most recent hurricane, Williams Tree Company has deployed seven crews to Florida and Georgia to provide critical [emergency storm](#) response services. Partnering with Florida Power & Light (FPL) and other emergency contractors in the region, Williams Tree Company is focused on clearing trees, removing dangerous limbs, and safely extracting trees from power lines to help restore power and safety to affected communities.

Rapid Response to Hurricane Damage

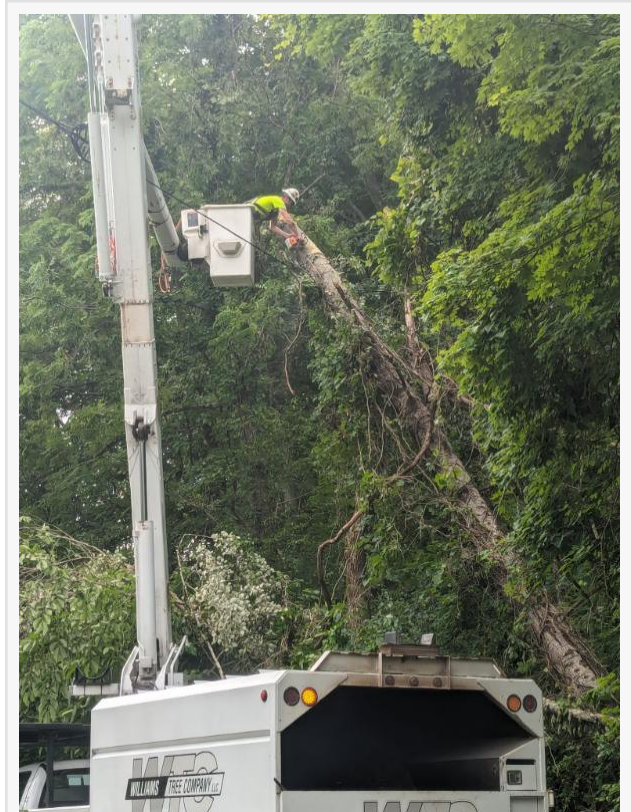
The hurricane caused widespread destruction across parts of Florida and Georgia, leaving downed trees, blocked roads, and damaged power lines in its wake.

Williams Tree Company, with its experienced crews and specialized equipment, was quick to respond to the call for help, sending teams into the hardest-hit areas to assist in the recovery efforts.

“Our priority is to ensure the safety of residents and restore essential services like power,” said Bryan Burns of Williams Tree Company. “We’ve mobilized seven crews to work around the clock to clear hazardous trees and remove dangerous limbs that are threatening power lines and homes. It’s a challenging task, but our team is trained and ready to handle it.”

Partnering with Local Utility Providers and Emergency Contractors

Williams Tree Company is proud to partner with Florida Power & Light (FPL) and several other emergency contractors in the region to address the urgent need for storm recovery services. The company’s crews are working hand-in-hand with utility providers to clear trees from power lines



Storm crews at work

and ensure that crews can safely restore power to thousands of homes.

“Our collaboration with FPL and other contractors is key to ensuring a coordinated and efficient response,” said [Insert Name]. “By working together, we’re able to cover more ground, clear debris faster, and get power back to residents who need it most.”

Comprehensive Storm Response Services

Williams Tree Company’s teams are providing a wide range of emergency storm services, including:

[Tree Removal](#): Crews are clearing downed trees from roadways and residential areas, allowing for safe passage and reducing the risk of further damage.

[Power Line Clearing](#): The teams are working closely with utility providers to remove trees and limbs from power lines, speeding up the process of power restoration.

[Hanging Limb Removal](#): Dangerous, hanging limbs that pose a threat to homes, vehicles, and people are being safely removed by skilled arborists to ensure safety in the storm’s aftermath.

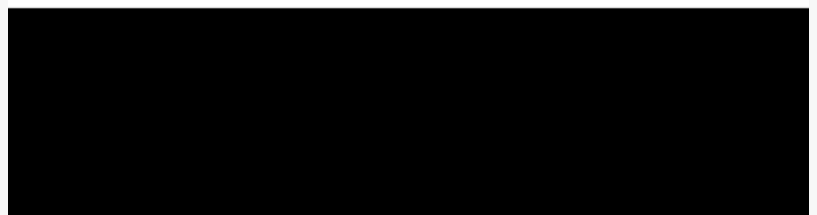
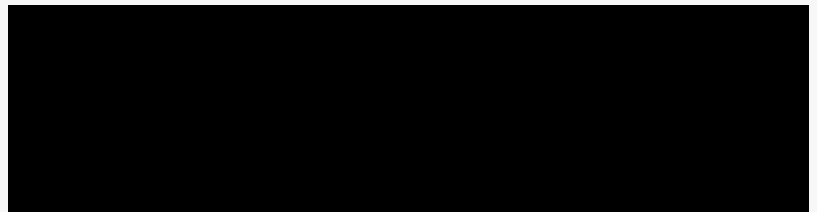
The company’s trained arborists are using specialized equipment to safely and efficiently clear debris, working under challenging conditions to help communities recover quickly.

A Commitment to Safety and Excellence

Safety is always the top priority for Williams Tree Company. The crews deployed to Florida and



Crews clean up in the aftermath of the storm



WTC Logo

Georgia are fully equipped with the necessary tools and personal protective equipment (PPE) to perform their duties safely and effectively. By adhering to strict safety protocols and industry standards, the company ensures that its teams can operate efficiently in hazardous environments without compromising on safety.

“Our team is well-prepared for these kinds of situations,” said Bryan Burns. “We have the experience, the equipment, and the training needed to handle emergency storm work safely. We’re proud of our crews for their dedication and hard work during this critical time.”

Nationwide Storm Response Expertise

Williams Tree Company has built a strong reputation over the past 30 years for its ability to respond quickly and effectively to natural disasters across the country. From hurricanes in the Southeast to windstorms in the Midwest, the company has consistently provided top-tier storm response services, helping communities recover from devastating events.

“Our history of storm response work speaks for itself,” Bryan added. “We’ve been trusted by cities, utilities, and contractors across the nation to handle large-scale storm cleanup, and we’re honored to bring our expertise to Florida and Georgia in this time of need.”

About Williams Tree Company

Williams Tree Company is a full-service tree care and removal company based in Paragon, Indiana, offering a wide range of services, including tree removal, trimming, stump grinding, lot clearing, crown reduction, forestry mulching, and emergency storm response. Founded by Danny Williams in 1995, the company has grown into a leader in the tree care industry, known for its commitment to safety, quality, and customer satisfaction.

With over 30 years of experience, Williams Tree Company has provided storm recovery services nationwide, helping communities restore safety and normalcy in the aftermath of natural disasters.

For more information about Williams Tree Company and its storm response services, visit <https://williamstreecompanyllc.com/>.

Sean Murphy

Williams Tree Company

+1 765-390-1905

[email us here](#)

Visit us on social media:

[Facebook](#)

[LinkedIn](#)

This press release can be viewed online at: <https://www.einpresswire.com/article/752574972>

EIN Presswire's priority is source transparency. We do not allow opaque clients, and our editors

try to be careful about weeding out false and misleading content. As a user, if you see something we have missed, please do bring it to our attention. Your help is welcome. EIN Presswire, Everyone's Internet News Presswire™, tries to define some of the boundaries that are reasonable in today's world. Please see our Editorial Guidelines for more information.

© 1995-2024 Newsmatics Inc. All Right Reserved.