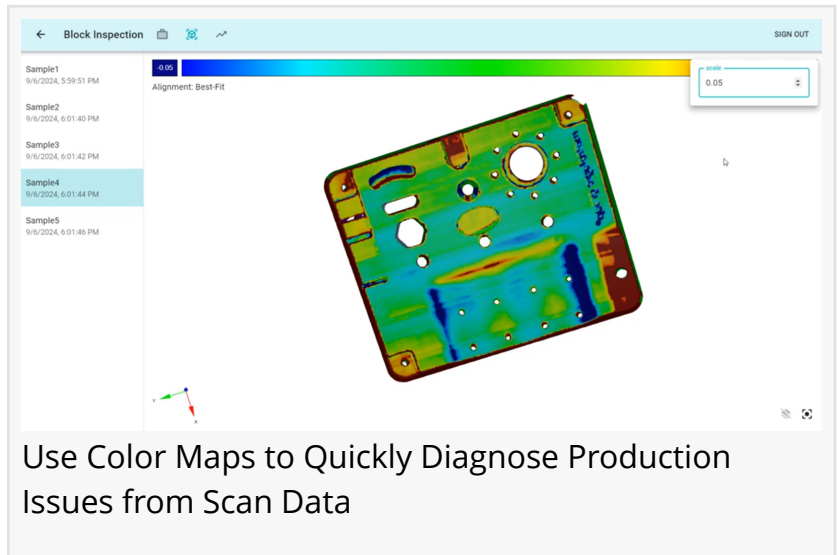


# DCS Announces New Release of QDMWEB with Scanned Data Management and Analysis

*Dimensional Control Systems has released QDMWEB QualityScan with new features that support fast and visual analysis of scanned data.*

AUBURN HILLS, MI, UNITED STATES, October 30, 2024 /EINPresswire.com/ -- Dimensional Control Systems (DCS) is proud to announce the [launch of the new QDMWEB QualityScan](#). This new addition to QDMWEB QI provides users the ability to visualize and review Dimensional quality data with 3D cad on the cloud, and review and analyze corporate wide scan data in one interface. These features, combined with the power of QDMWEB QI to access quality data instantly, provide a complete quality management solution for manufacturers of all sizes.



Use Color Maps to Quickly Diagnose Production Issues from Scan Data



As technology advancement accelerates it is important to have a system that can bring all of this quality data together, standardize it, and make it actionable to the teams that need to use it"

*Thagu Vivek, Director of Quality Data Management (QDM) Solutions*

[QDMWEB QI manufacturing quality management system](#) gives access to quality information from anywhere, at any time, instantly. Using Quality Intelligence, QDMWEB QI automates your quality collection and reporting, helping manufacturers reduce their costs with real-time monitoring and powerful SPC tools.

The [new version of QDMWEB QualityScan expands QDMWEB QI](#) to manage, analyze, and report on scanned data using visual 3D CAD, Statistical Process Control, and customizable quality metrics. This expansion provides the ability to view statistics on 3D CAD with SPC charts on

demand, and to create localized root cause reports with CAD as a means to bring all stakeholders onto the same page for problem solving, drastically improving the time to find the source of issues and resolve them in manufacturing.

Furthermore, this new update gives QDMWEB the ability to use a single system to collect and analyze scan data from multiple scan systems with an interactive portal to navigate and view the scan data as a 3D color map, SPC report, and custom views. These results can be queried and compared to any other scan results, allowing for fast analysis of before and after quality from machine changes, supplier changes, process updates, and more. With added sensitivity analysis to highlight the highs and lows of scanned parts, QDMWEB QualityScan provides an enhanced view of the scanned results for faster and more accurate analysis.

“As technology advancement accelerates, and more advanced inspection methods become accessible to more manufacturers, it is important to have a system that can bring all of this quality data together, standardize it, and make it actionable to the teams that need to use it,” said Thagu Vivek, Director of Quality Management Systems at DCS. “As our clients implement more advanced processes, it is imperative that we support those efforts with new updates to QDMWEB to meet the growing demand for centralized data management.”

QDMWEB QI and QDMWEB QualityScan are both available from Dimensional Control Systems, DCS. To learn more, visit <https://www.3dcs.com/qdmweb-qi-spc-quality-management-platform>. For a free demonstration of the new features, contact DCS at <https://mkt.3dcs.com/contact-us>.

Benjamin Reese

Dimensional Control Systems

[email us here](#)

Visit us on social media:

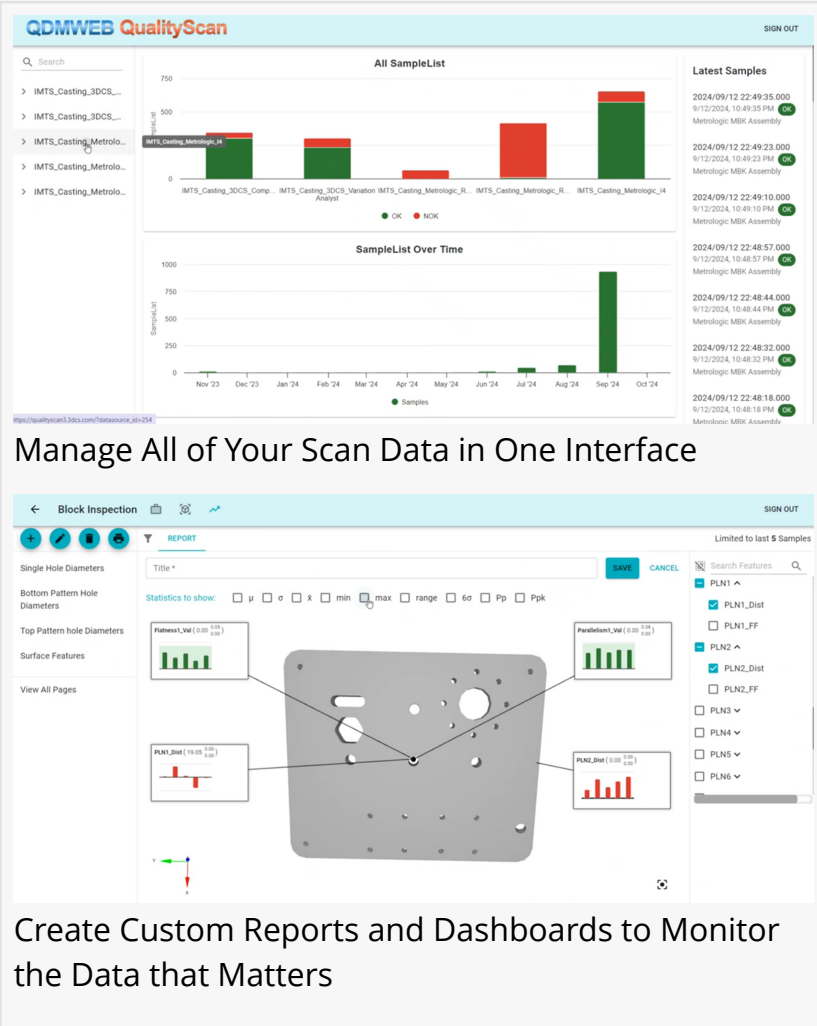
[Facebook](#)

[X](#)

[LinkedIn](#)

[YouTube](#)

[Other](#)



The image displays two screenshots of the QDMWEB QualityScan software interface. The top screenshot, titled "All SampleList", shows a bar chart of sample counts over time from Nov '23 to Oct '24. The y-axis represents "Sample Count" from 0 to 750. The x-axis lists months. Data points are categorized as "OK" (green) and "NOK" (red). A legend indicates "OK" in green and "NOK" in red. The bottom screenshot, titled "Block Inspection", shows a 3D model of a part with several holes. It includes a "REPORT" section with "Statistics to show" options (μ, σ, x, min, max, range, 6σ, Pp, Ppk) and a "Search Features" list on the right with checkboxes for PLN1, PLN1\_FF, PLN2, PLN2\_Dist, PLN2\_FF, PLN3, PLN4, PLN5, and PLN6. The interface also shows "Single Hole Diameters", "Bottom Pattern Hole Diameters", "Top Pattern hole Diameters", "Surface Features", and "View All Pages" on the left side.

Manage All of Your Scan Data in One Interface

Create Custom Reports and Dashboards to Monitor the Data that Matters

This press release can be viewed online at: <https://www.einpresswire.com/article/756064919>

EIN Presswire's priority is source transparency. We do not allow opaque clients, and our editors try to be careful about weeding out false and misleading content. As a user, if you see something we have missed, please do bring it to our attention. Your help is welcome. EIN Presswire, Everyone's Internet News Presswire™, tries to define some of the boundaries that are reasonable in today's world. Please see our Editorial Guidelines for more information.

© 1995-2024 Newsmatics Inc. All Right Reserved.