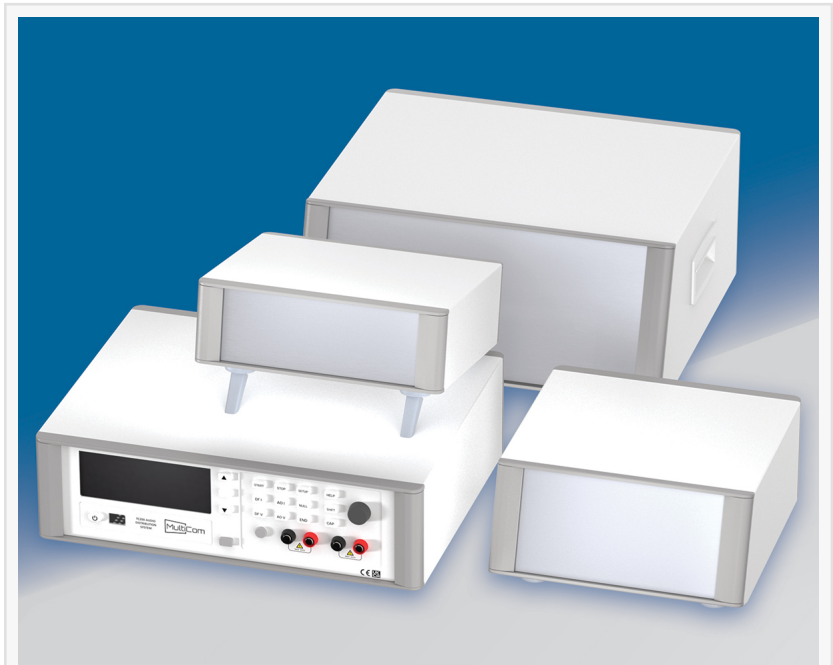


# METCASE Launches Smart New Colors For Its TECHNOMET Premium Instrument Enclosures

*Premium TECHNOMET instrument enclosures are now available in a smart new color scheme which matches modern instrumentation and electronic systems.*

BRIDGEVILLE, PA, UNITED STATES, November 7, 2024 /EINPresswire.com/ -- These elegant desktop and portable enclosures are ideal for medical and wellness electronics, test and measurement, industrial control, peripheral devices and interfaces, switchboxes, communications and laboratory equipment.

The new color choice is traffic white (RAL 9016) for the main case with traffic gray A (RAL 7042) bezels. It complements the existing standard options of either light gray (RAL 7035) or anthracite (RAL 7016). Custom colors are also available.



Metcase's TECHNOMET enclosures now come in a sleek new color scheme: traffic white with traffic gray bezels. They are available in an extensive range of sizes including sloping-front versions.

[TECHNOMET aluminium enclosures](#) feature a modern, cohesive design. Diecast front and rear bezels fit flush with the main case body. Snap-on trims hide the fixing screws. The enclosures can be specified either with or without a bail arm that doubles as a desk stand. Larger sizes (5.91" high) also offer the option of ABS side handles for easy portability. Three sizes can be specified with a sloping front.

“

We've added a great new colour combination that works even better with the design language of today's electronics equipment.”

*Sean Bailey*

All the enclosures have ventilation slots in the base and removable rear panel as standard. This panel is recessed to protect switches and connectors. The anodised front panel (accessory) is also recessed for

displays and keypads.

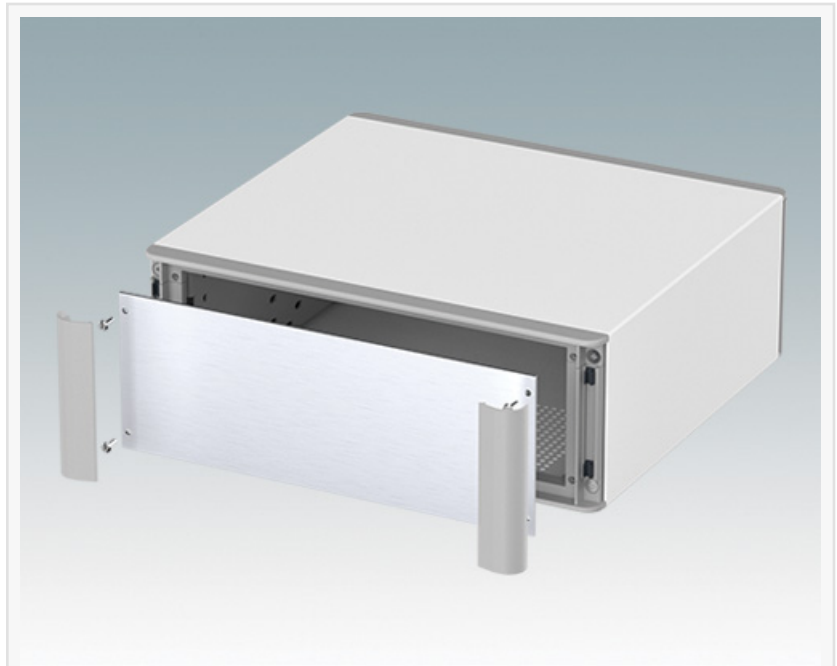
Inside, the base panel is fitted with four M3 PCB mounting pillars, and the chassis is pre-punched for fitting snap-in PCB guides (accessories) in three, five, seven or nine positions. All the case panels have M4 threaded pillars for earth connections. The enclosures are supplied with four modern ABS feet with non-slip pads.

TECHNOMET is available in 11 standard sizes from 8.86" x 7.87" x 2.95" to 13.78" x 12.60" x 5.91". Accessories include front panels, PCB guides and PCB/panel fixing screws (M3).

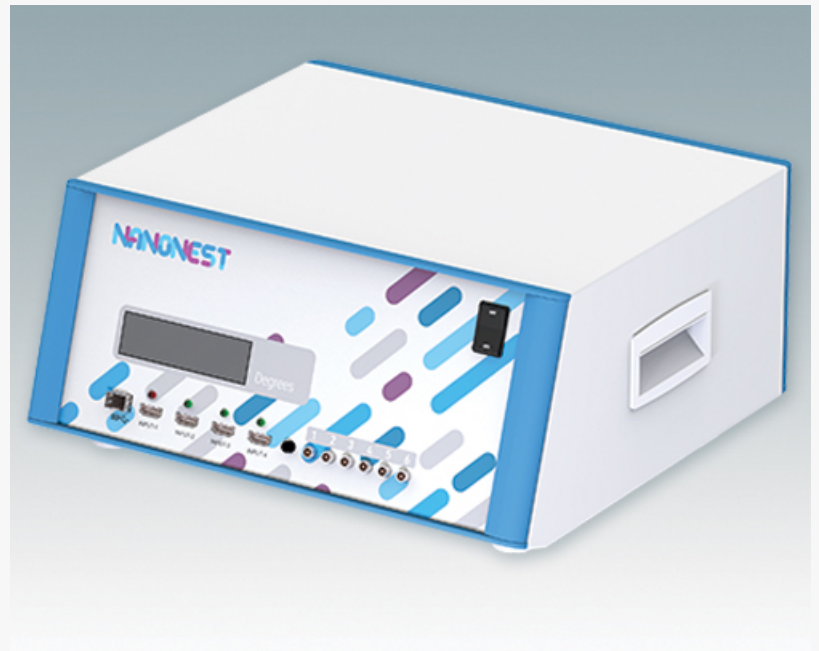
METCASE can supply [TECHNOMET fully customized](#). Services include custom sizes, custom front panels, CNC machining, fixings and inserts, painting and finishing, and photo-quality digital printing.

[VIEW TECHNOMET ENCLOSURES RANGE >>](#)

SEAN J BAILEY  
OKW Enclosures Inc  
+1 412-220-9244  
[email us here](#)



Anodized aluminum front panels are recessed in the TECHNOMET front bezel – protecting the controls and displays. All fixings are hidden by snap-on trims.



TECHNOMET enclosures can be supplied fully customized to customers' individual requirements.

This press release can be viewed online at: <https://www.einpresswire.com/article/758275474>  
EIN Presswire's priority is source transparency. We do not allow opaque clients, and our editors try to be careful about weeding out false and misleading content. As a user, if you see something we have missed, please do bring it to our attention. Your help is welcome. EIN Presswire, Everyone's Internet News Presswire™, tries to define some of the boundaries that are reasonable

in today's world. Please see our Editorial Guidelines for more information.

© 1995-2024 Newsmatics Inc. All Right Reserved.