

New Generative AI Model, Flux 1.1 Pro Ultra, with High-Resolution, Realistic Image Generation, Now Available on Segmind

Flux 1.1 Pro Ultra is out! High-res, fast image generation, with realistic styles -- now accessible on Segmind for creative projects everywhere.

SANTA CLARA, CA, UNITED STATES, November 14, 2024 / EINPresswire.com/ -- Black Forest Labs has unveiled the [Flux 1.1 Pro Ultra](#) model, a state-of-the-art addition to its line of generative AI models. This release brings exceptional enhancements in image resolution, realism, and speed, designed to meet the growing demands of creators, marketers, and developers seeking high-quality visuals and efficient processing times. Segmind is now offering the Flux 1.1 Pro Ultra model as an API, allowing users to seamlessly incorporate its capabilities into diverse applications.

The Flux 1.1 Pro Ultra model stands out with its new Ultra mode, capable of producing images at a stunning 4MP resolution. This high-resolution feature operates with remarkable efficiency, generating visuals in under 10 seconds per image—a significant improvement over comparable high-resolution models.

Such speed is vital for applications that require rapid prototyping and near-instantaneous image processing, including advertising, social media, and real-time content creation.



A luxurious, modern living room with a grand fireplace as the centerpiece. Large windows look out onto a dark, rainy night, where wet tree branches glisten under the night sky. The room is decorated with plush, dark blue sofas and warm lighting. [Flux-1.1-Pro-Ultra]

Alongside Ultra mode, Flux 1.1 Pro Ultra introduces Raw mode, offering users an option for a more candid, natural image aesthetic. This mode is particularly useful for applications such as lifestyle photography and product marketing, where a realistic look and feel are essential.

Unlike traditional models that may overly stylize images, Flux 1.1 Pro Ultra in Raw mode captures diverse human subjects and realistic nature scenes with impressive authenticity. The model's ability to generate clear, accurately spaced text within images further adds to its versatility, making it ideal for advertising materials, signage, and other text-driven visual assets.

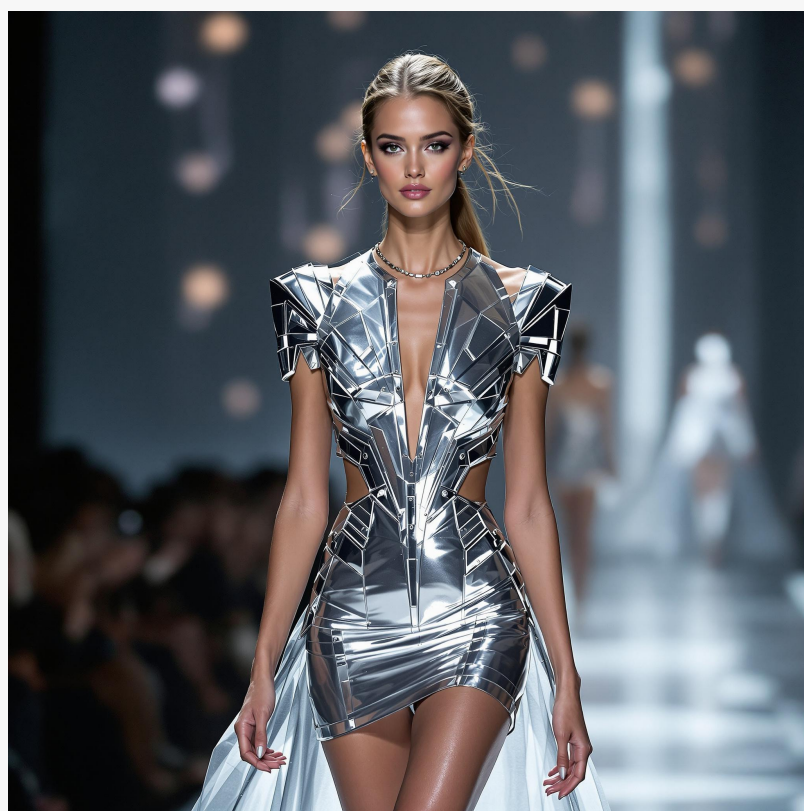
Flux 1.1 Pro Ultra also excels in handling artistic styles, allowing creators to approximate textures and techniques such as pointillism with ease. This ability to simulate complex art forms offers exciting possibilities for digital artists and designers.

Additionally, the model's effectiveness in rendering realistic portraits with nuanced lighting and expressions positions it as a valuable tool for industries that rely on lifelike visuals, such as digital publishing and e-commerce.

The model's capabilities extend to translating abstract concepts into visuals, making it especially valuable for artists and storytellers who seek to evoke specific moods or emotions through imagery. For example, with prompts centered around concepts like melancholy or nostalgia, the model produces atmospherically rich scenes that effectively capture these themes.

While Flux 1.1 Pro Ultra demonstrates exceptional skill in most visual elements, it has certain limitations in rendering anatomically complex poses, such as intricate hand gestures or culturally specific attire. However, its strengths in text rendering, realism, and artistic flexibility make it a powerful tool across a wide array of use cases.

The Flux 1.1 Pro Ultra model is now accessible on Segmind as an API, where developers and enterprises can integrate its advanced image generation capabilities into custom workflows.

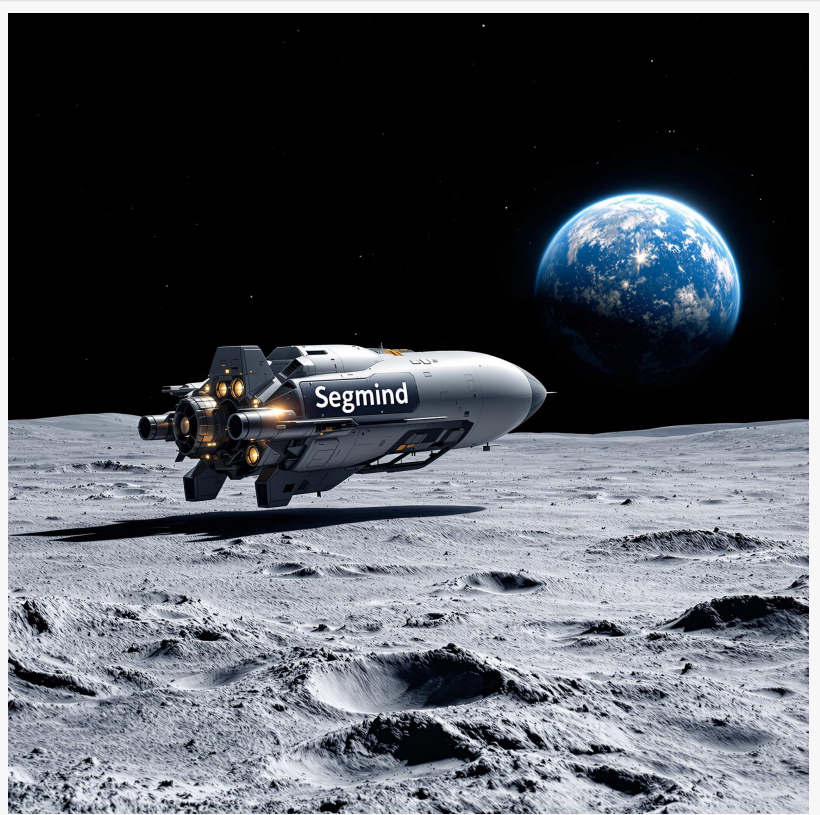


A beautiful model walking down a New York Fashion Show runway wearing a futuristic silver dress. Background blurred. Studio photo shot. [Flux-1.1-Pro-Ultra]

Segmind's platform supports flexible deployment options, offering both serverless and dedicated API endpoints to suit varied project requirements, from small-scale applications to large production environments.

Segmind is a cloud-based platform that's redefining what's possible in the world of Generative AI. It offers developers and creators an arsenal of cutting-edge tools, from powerful APIs for seamless deployment to [Pixelflow](#), a no-code tool that makes building complex AI workflows a breeze.

As a reliable and scalable platform, Segmind has already processed over 20 million API requests, demonstrating its capability to handle enterprise-level demands. With its Serverless APIs, companies can quickly scale their applications as needed, ensuring smooth performance regardless of traffic surges. Segmind's platform also caters to a growing community of over 200,000 users, empowering them to experiment, innovate, and scale with generative AI for projects of any size.



A spaceship on the moon. The spaceship has the text "Segmind" written on it. The earth in the background. Photorealistic. High resolution. [Flux-1.1-Pro-Ultra]

For more information on integrating the Flux 1.1 Pro Ultra model, visit [Segmind's website](#).

Steven Lee

Segmind

[email us here](#)

Visit us on social media:

[X](#)

[LinkedIn](#)

[YouTube](#)

This press release can be viewed online at: <https://www.einpresswire.com/article/760661851>

EIN Presswire's priority is source transparency. We do not allow opaque clients, and our editors try to be careful about weeding out false and misleading content. As a user, if you see something we have missed, please do bring it to our attention. Your help is welcome. EIN Presswire, Everyone's Internet News Presswire™, tries to define some of the boundaries that are reasonable in today's world. Please see our Editorial Guidelines for more information.

