

Zeelool Introduces the Timeless Fashion Statement - Cat Eye Glasses

Zeelool has recently launched a new collection of cat eye glasses that are sure to make a statement in the fashion world.

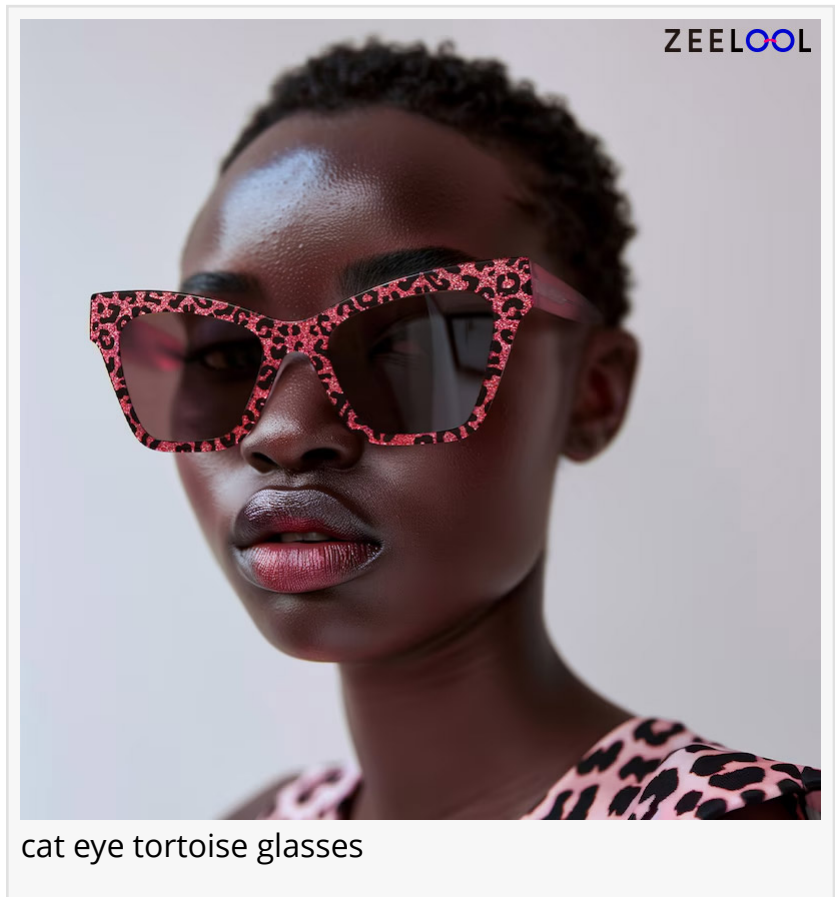
AUSTIN, TX, UNITED STATES, November 20, 2024 /EINPresswire.com/ -- Zeelool, a leading online glasses retailer, has recently launched a new collection of cat eye glasses that are sure to make a statement in the fashion world. These cat eye glasses are not just a trend, but a timeless fashion statement that has been popular for decades. With a variety of styles and colours, Zeelool's cat eye glasses are perfect for anyone looking to add a touch of vintage glamour to their wardrobe.

Cat eye glasses are characterized by their upswept outer edges, resembling the shape of a cat's eye. They first

gained popularity in the 1950s and have since become a staple in the fashion industry. Zeelool's collection features a range of styles to suit different preferences and face shapes. From classic [black frames](#) to bold [tortoiseshell frames](#), there is a pair of cat eye glasses for everyone.

The black cat eye glasses from Zeelool's collection exude sophistication and elegance. They are perfect for both formal and casual occasions, making them a versatile accessory for any outfit. The tortoiseshell cat eye glasses, on the other hand, add a touch of playfulness and can elevate any look. For those who want to make a bold statement, the oversized cat eye glasses are the perfect choice. And for a modern twist on the classic style, the modified cat eye glasses offer a unique and trendy look.

But what face shape is suitable for wearing [cat eye frame glasses](#)? According to Zeelool's experts, cat eye glasses are suitable for a variety of face shapes. For those with a round face, the upswept



cat eye tortoise glasses

edges of the glasses can create the illusion of a longer and slimmer face. Oval faces can pull off any style of cat eye glasses, while square faces can benefit from the softness and femininity of the frames. Diamond faces can also rock cat eye glasses, as they add balance to the sharp angles of the face. Triangular faces can opt for cat eye glasses with thicker frames to add width to the forehead, and small faces can choose smaller frames to avoid overwhelming their features. Even those with a chubby face can rock cat eye glasses by choosing frames with a wider bridge and thinner temples.

Zeelool's new collection of cat eye glasses is not just a fashion statement, but a timeless accessory that can elevate any outfit. With a variety of styles and patterns, there is a pair for every face shape and personal style. So why not add a touch of vintage glamour to the wardrobe with Zeelool's cat eye glasses? Visit their website to explore the collection and make a statement with the eyeglasses.

kelly li
ZEELLOOL VISION GROUP
+1 302-990-0619

[email us here](#)

Visit us on social media:

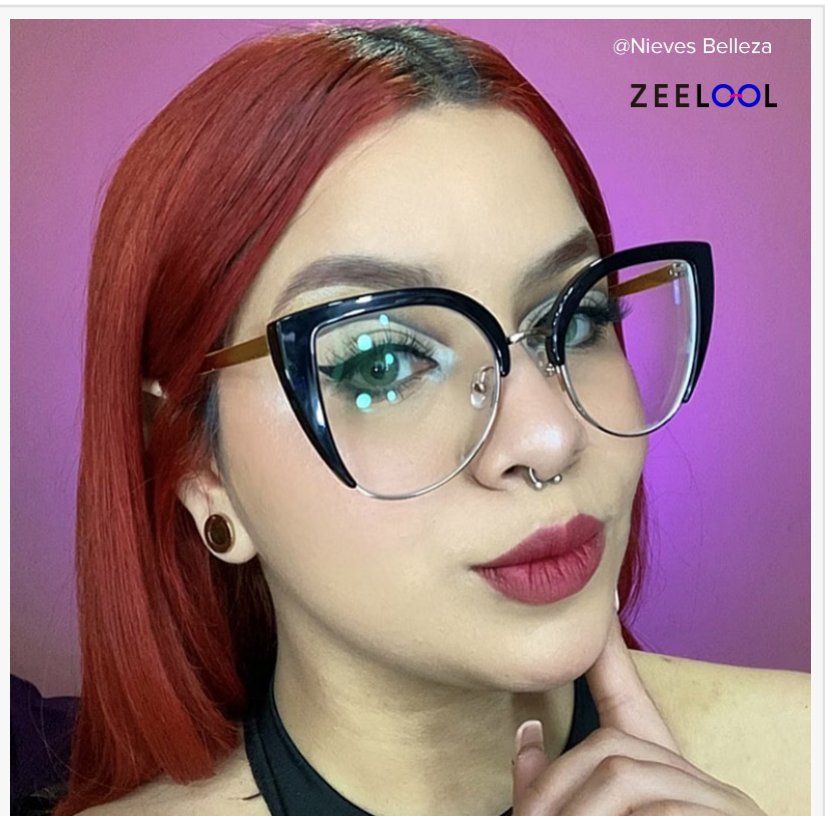
[Facebook](#)

[X](#)

[Instagram](#)

[YouTube](#)

[TikTok](#)



cat eye black glasses

ZEELLOOL

Zeelool Online

EIN Presswire's priority is source transparency. We do not allow opaque clients, and our editors try to be careful about weeding out false and misleading content. As a user, if you see something we have missed, please do bring it to our attention. Your help is welcome. EIN Presswire, Everyone's Internet News Presswire™, tries to define some of the boundaries that are reasonable in today's world. Please see our Editorial Guidelines for more information.

© 1995-2024 Newsmatics Inc. All Right Reserved.