

InDepth Excavation Marks Industry Leadership with Advanced Technology Investment and Service Expansion in Everett

Monroe-based excavation specialist celebrates milestone achievements, announces 24/7 Emergency Response Division and advanced earthwork technology for 2025.

EVERETT, WA, UNITED STATES,
November 21, 2024 /

[EINPresswire.com/](https://www.einpresswire.com/) -- [InDepth Excavation](#), Western Washington's premier site development and earthwork specialist, marks a significant milestone with the completion of over 400 successful

projects across Snohomish, King, and Skagit counties. Founded by Dillon Aschenbrenner in 2018, the company has rapidly established itself as a leader in ground preparation, soil management, and professional drainage solutions throughout the Pacific Northwest."

“

I strive to deliver thoughtful, prompt, and professional excavation services. What started as a passion serving family and friends has grown into a commitment to excellence across Western Washington.”

*Dillion from Indepth
Excavation*

Before establishing InDepth Excavation, Aschenbrenner distinguished himself at Alderwood Water and Wastewater District (AWWD), where he became the youngest Utility Worker Lead in company history. His excellence in leadership was recognized with the prestigious Arden Blackledge "Excellence in Leadership" award in December 2017.

"Each project brings its own set of challenges that necessitate accurate planning and execution," shares Aschenbrenner. "Our success stems from our deep understanding of Western Washington's diverse terrain

and soil conditions, combined with our team's 60+ years of combined expertise."



Indepth Excavation's Logo

The company's comprehensive site work portfolio includes foundation preparation, underground utility trenching, subsurface drainage installation, stormwater management systems, and precision ground leveling projects. Their capabilities span both residential and commercial sectors, from custom home foundation excavation to large-scale commercial site development and earth moving operations.

Our investment in advanced earthwork technology drives our precision and efficiency," explains Aschenbrenner. "From GPS-guided grade control systems to topographic mapping programs for site planning, we leverage cutting-edge innovations to deliver superior ground preparation results." This technological advantage enables InDepth Excavation to handle increasingly complex terrain modification projects while maintaining strict environmental standards.

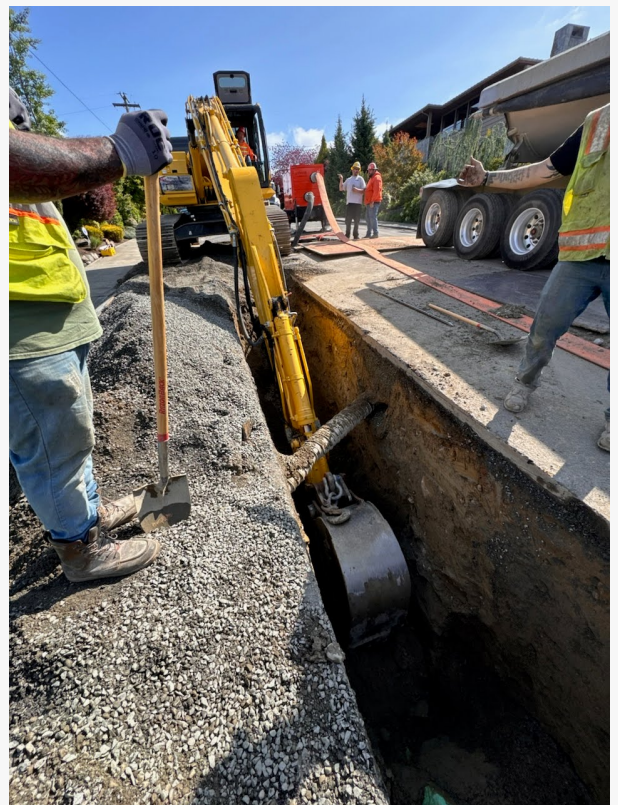
The company's commitment to responsible earth moving shapes every aspect of their operations. Their sustainable practices include erosion control systems, low-emission equipment options, and strategic soil management. This dedication to environmentally conscious site development has earned them recognition as a leader in sustainable construction practices across Western Washington.

A recent customer testimonial highlights their expertise in drainage solutions: "Water used to flow out of our field, down our driveway, and next to the house during the rainy winter months. Dillon and the team installed a French drain the length of the drive with exceptional skill. Their knowledge, transparency in costs, and amazing backhoe operation resulted in a perfect solution to our drainage issues."

The company has established strategic partnerships with leading construction firms throughout the region, ensuring seamless project coordination for developments of all sizes. Their work spans from



Gravel Installation and Excavation Job in North Seattle Washington with Indepth Excavation



Excavation Job Outside of Everett, WA with Indepth Excavation

residential projects to municipal infrastructure improvements, including park developments and critical utility installations.

Looking ahead, InDepth Excavation announces significant expansion plans to meet growing regional demands. "We're investing heavily in our future," reveals Aschenbrenner. "This includes adding specialized equipment for complex terrain management and implementing new project management systems to enhance our service delivery."

The company's growth strategy includes the launch of their new Emergency Response Division in early 2025, designed to provide 24/7 support for urgent excavation needs throughout Western Washington. This expansion will create several new jobs and introduce specialized services for time-sensitive projects, including emergency utility repairs and critical infrastructure support.

"The construction landscape in Western Washington continues to evolve," notes Aschenbrenner. "We're seeing increased demand for precise [excavation work](#) in challenging terrains, particularly in areas requiring careful environmental consideration. Our team's expertise in managing these complex projects has established us as an industry leader."

The company's dedication to community development includes active involvement in local infrastructure improvements and support for sustainable building practices. Their work has contributed to numerous public projects, demonstrating their commitment to regional growth and environmental stewardship.

For more information about InDepth Excavation's services or to schedule a consultation, visit their website at indepthex.com. Local property owners and developers can also visit their [Monroe location](#) to discuss their excavation needs in person.

About InDepth Excavation:

Located at 14751 N Kelsey St Ste #105, Monroe, Washington, InDepth Excavation provides comprehensive excavation and site preparation services throughout Western Washington. Their commitment to innovation, sustainability, and excellence continues to set new standards in the excavation industry.

Dillion Aschenbrenner

Indepth Excavation

+1 425-367-1521

indepthex@gmail.com

Visit us on social media:

[Facebook](#)

[LinkedIn](#)

[Instagram](#)

This press release can be viewed online at: <https://www.einpresswire.com/article/762564906>

EIN Presswire's priority is source transparency. We do not allow opaque clients, and our editors try to be careful about weeding out false and misleading content. As a user, if you see something we have missed, please do bring it to our attention. Your help is welcome. EIN Presswire, Everyone's Internet News Presswire™, tries to define some of the boundaries that are reasonable in today's world. Please see our Editorial Guidelines for more information.

© 1995-2024 Newsmatics Inc. All Right Reserved.