

Pro Service Mechanical Enhances Emergency Plumbing Response Capabilities

Pro Service Mechanical strengthens its emergency plumbing response capabilities to provide critical support during urgent situations.

SASKATOON, SASKATCHEWAN, CANADA, December 18, 2024 /EINPresswire.com/ -- Pro Service Mechanical, a trusted provider of mechanical services in Saskatoon, Saskatchewan, announces a significant enhancement to its [emergency plumbing response](#) capabilities. This strategic improvement demonstrates the company's commitment to addressing urgent plumbing challenges that can critically impact residential and commercial properties.

Plumbing emergencies can occur unexpectedly, often leading to potential property damage and significant operational disruptions. Pro Service Mechanical has developed a comprehensive approach to mitigate these risks by expanding its emergency response infrastructure and capabilities.

The enhanced emergency plumbing program reflects Pro Service Mechanical's strategic approach to urgent plumbing needs. The company has expanded its team of licensed plumbers, each equipped with



Pro Service Mechanical Logo



Plumbing Repair Services Saskatoon

advanced diagnostic equipment and a comprehensive inventory of essential parts and materials. This preparation enables technicians to address most emergency situations during their initial visit, minimizing water damage risks and reducing property disruption.

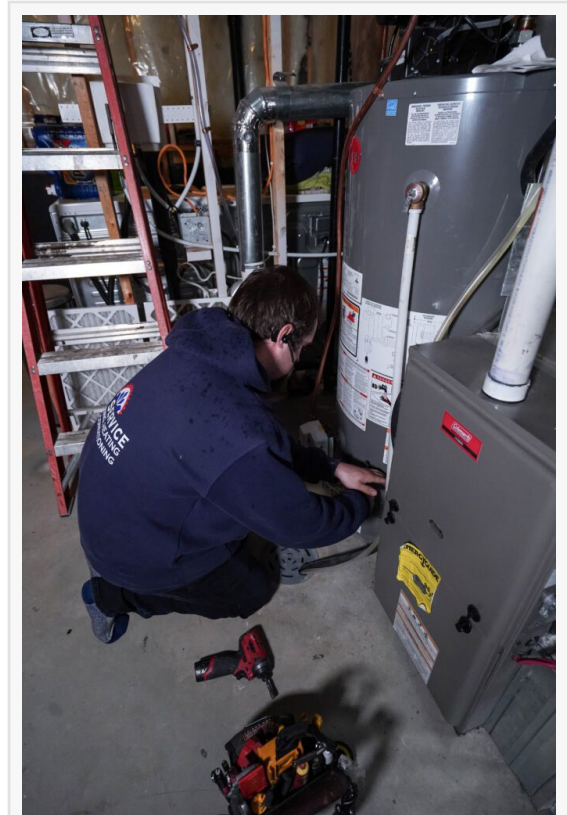
Quick response times are critical during plumbing emergencies, where moments can determine the difference between minor inconvenience and extensive property damage. Pro Service Mechanical has implemented an advanced dispatch system that efficiently directs the nearest available technician to emergency calls. Strategically positioned service vehicles throughout Saskatoon ensure rapid response to any location within the service area.

The emergency plumbing team is prepared to handle a diverse range of urgent situations, including burst pipes, severe leaks, [sewer backups](#), frozen pipes, water heater failures, and overflowing fixtures. Technicians undergo continuous training in the latest emergency repair techniques and utilize modern technology for accurate problem diagnosis and efficient repairs. This expertise is particularly crucial during Saskatchewan's challenging winter months when frozen and burst pipes can create severe emergency scenarios.

Emergency services are designed to support both residential and commercial properties, with specialized protocols tailored to different property types. Residential emergencies receive immediate attention to protect homes and personal belongings, while commercial clients benefit from technicians experienced in addressing the unique challenges of various business environments.

The company places significant emphasis on damage prevention during emergency responses. Technicians are trained to quickly locate and access water shut-off valves, evaluate water damage extent, and take immediate steps to prevent further property damage while repairs are underway. This approach helps minimize restoration costs and reduces recovery time for affected properties.

Clear communication remains a priority during emergency situations. Pro Service Mechanical provides regular updates throughout the emergency response process, ensuring property owners and managers understand the situation's status, required repairs, and expected completion times. This transparency helps clients make informed decisions during stressful emergency scenarios.



Water Heater Installation and Repair

The emergency preparedness initiative includes educational resources to help property owners identify potential plumbing issues before they escalate and provide guidance on immediate response steps during plumbing emergencies. This proactive approach helps minimize potential damage and ensures more effective emergency responses.

To ensure [emergency plumbing services](#) remain accessible, Pro Service Mechanical offers various payment options and maintains relationships with financing partners. The company also collaborates with insurance providers to facilitate claims processes when emergency repairs are covered under property insurance policies.

Mark Wanner

Pro Service Mechanical

+1 306-230-2442

[email us here](#)

Visit us on social media:

[Facebook](#)

[X](#)

[Instagram](#)

[YouTube](#)

This press release can be viewed online at: <https://www.einpresswire.com/article/767692880>

EIN Presswire's priority is source transparency. We do not allow opaque clients, and our editors try to be careful about weeding out false and misleading content. As a user, if you see something we have missed, please do bring it to our attention. Your help is welcome. EIN Presswire, Everyone's Internet News Presswire™, tries to define some of the boundaries that are reasonable in today's world. Please see our Editorial Guidelines for more information.

© 1995-2024 Newsmatics Inc. All Right Reserved.