

£350,000 Factory Investment At Interior Door Systems

This investment of £350,000 demonstrates IDS's commitment to innovation, sustainability, and supporting the UK's housebuilding and developer markets.

WARRINGTON, NORFOLK, UNITED KINGDOM, January 15, 2025 /EINPresswire.com/ -- [Interior Door Systems](#) Expands Manufacturing Capacity with £350,000 Factory Investment

Interior Door Systems (IDS), a leader in bespoke interior door solutions, has unveiled its newly refurbished manufacturing facility following a £350,000+ investment. This milestone, the second largest in the company's history, demonstrates IDS's commitment to innovation, sustainability, and supporting the UK's housebuilding and developer markets.

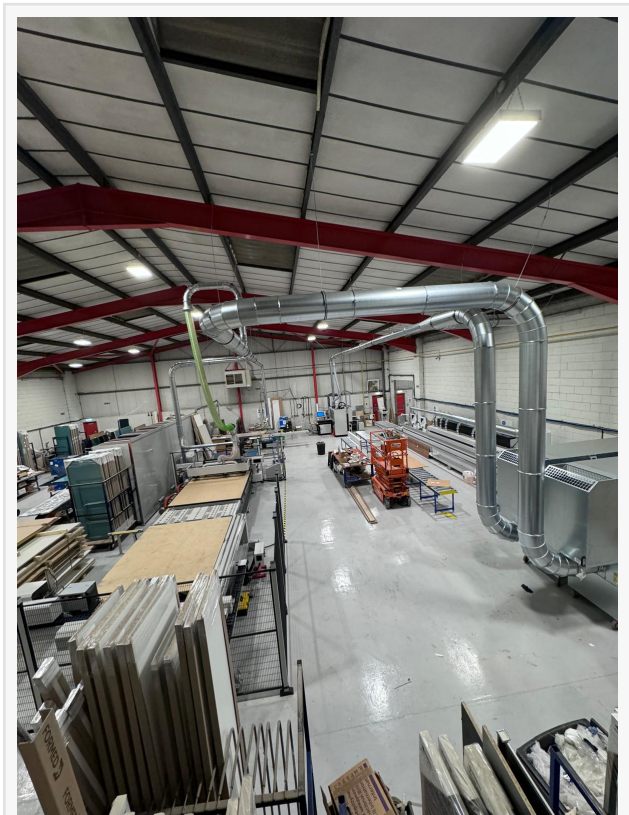
The refurbishment, which includes cutting-edge equipment and green energy solutions, has increased IDS's output capacity tenfold, solidifying its position as a key supplier to the developer and housebuilding sectors.

A Game-Changer for Housebuilders and Developers

One of IDS's standout advantages is its in-house steel mill – a rarity in the UK, where only one other manufacturer offers this capability. This unique feature enables IDS to deliver superior quality and cost-effective solutions tailored to large-scale developments. The Kensington Range, for example, is optimised for housebuilders and developers, offering a versatile selection of 14 finishes, competitive pricing, and the ability to scale production to meet demand.

The expanded factory also includes

- Next-Generation CNC Machinery, enhancing precision for hinged and [sliding doors](#).
- Eco-Friendly Multi-Fuel Energy System, using production waste to power operations sustainably.



After the £350,000 IDS factory refit

- Advanced Edge Bander Technology, boosting efficiency and minimising waste.
- High-Performance Dust Extraction System, ensuring a cleaner, safer work environment.

Leadership Insight

Sam Russell, Managing Director of IDS, commented said

“This refurbishment is a defining moment for IDS. By dramatically enhancing our manufacturing capabilities, we are positioned to provide even greater value to housebuilders and developers. With our unique in-house steel mill and scalable production, we’re committed to delivering cost-effective, high-quality solutions that meet the growing demands of the UK market, all while upholding our dedication to sustainability.” For housebuilders and developers looking for reliable, scalable, and eco-conscious door solutions, IDS continues to raise the bar in quality and service.



“

“This refurbishment is a defining moment for IDS. enabling us to offer greater value to housebuilders and developers. We're committed to delivering cost-effective, high-quality solutions”

Sam Russell

Marie Fuller
Simpler PR Ltd
+44 7729 038700

[email us here](#)

Visit us on social media:

[LinkedIn](#)

[Instagram](#)

This press release can be viewed online at: <https://www.einpresswire.com/article/776492326>

EIN Presswire's priority is source transparency. We do not allow opaque clients, and our editors try to be careful about weeding out false and misleading content. As a user, if you see something we have missed, please do bring it to our attention. Your help is welcome. EIN Presswire, Everyone's Internet News Presswire™, tries to define some of the boundaries that are reasonable in today's world. Please see our Editorial Guidelines for more information.

© 1995-2025 Newsmatics Inc. All Right Reserved.