

SignWise: an introductory tool for learning sign language

Interested in learning sign language? SignWise offers real-time feedback, bite-sized lessons, and progress tracking—all in your browser.

NEW YORK, NY, UNITED STATES, February 6, 2025
/EINPresswire.com/ -- --

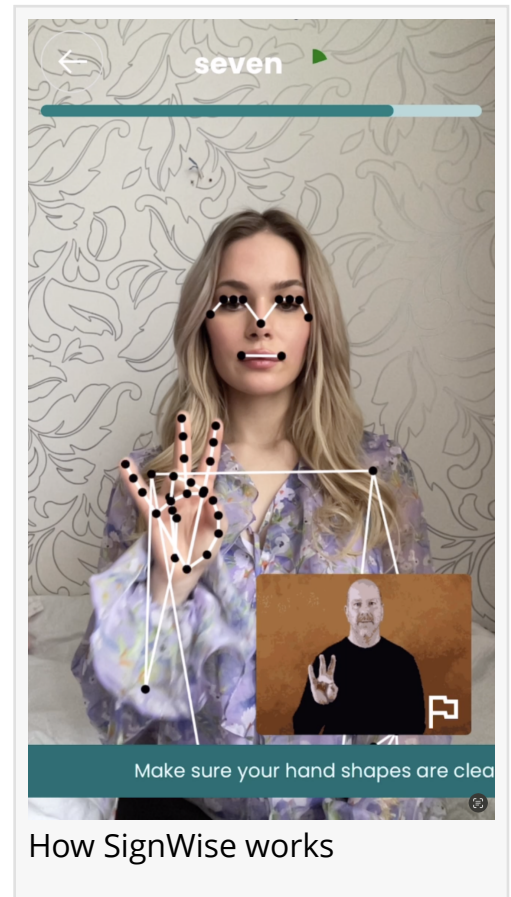
Learning a new language can be challenging, particularly without proper guidance, structured lessons, or beginner-friendly resources. Many learners struggle with staying focused, retaining knowledge, and managing frustration throughout the process. Additionally, maintaining motivation is essential, whether learning a language for personal aspirations, professional needs, or communication purposes.

Sign language, unlike spoken languages, relies entirely on visual communication through precise hand movements, facial expressions, and body language. While this makes it highly expressive, it also presents unique challenges for self-learners. Without structured guidance and feedback, mastering sign language independently can be difficult.

[SignWise](#) has been developed to make learning sign language more accessible, engaging, and effective. It is designed to complement traditional learning methods rather than replace formal instruction. The primary goal is to raise awareness of the Deaf community and promote sign language as an essential mode of communication.

Designed for individuals seeking a structured yet flexible approach to learning, SignWise offers a supportive environment where learners can practice at their own pace. The platform is accessible via a web browser, requiring only a computer or smartphone with a functional webcam.

Upon creating an account, users gain access to a structured curriculum consisting of instructional videos and interactive exercises. Each lesson introduces a series of signs,



How SignWise works

demonstrated through high-quality video content. A real-time AI-powered system analyzes movements, providing instant feedback to ensure accuracy. If a sign is performed correctly, the learner progresses to the next step. If errors are detected, the system offers guidance for improvement before advancing.

Key Features and Benefits

Live Feedback & Error Correction

Immediate feedback enhances the learning experience by correcting errors in real time, ensuring that each sign is accurately performed.

Bite-Sized Lessons for Maximum Focus

Lessons are structured in short segments to help learners retain information without feeling overwhelmed.

Progress Tracking & Personalized Learning Paths

The platform tracks individual progress, gradually adjusting lesson difficulty based on performance.

No Downloads Required

SignWise operates directly in a web browser, eliminating the need for additional software installations.

User-Friendly Interface & Continuous Updates

The platform is designed for ease of use, with regular updates based on user feedback to enhance the learning experience.

Future Developments

SignWise is committed to continuous innovation to enhance the learning experience. Upcoming updates will introduce support for [additional sign languages](#), broadening accessibility to users worldwide. Additionally, advancements in AI-driven recognition technology will further refine sign detection accuracy, ensuring that learners receive even more precise feedback. These improvements aim to create a more inclusive, effective, and scalable platform for sign language education.

By providing structured guidance and real-time feedback, SignWise aims to make learning sign language more intuitive and effective. Future updates will continue to build on this foundation, offering new features to engage learners and improve accessibility.

For more information, visit <https://signwise.app/> or contact hello@signwise.app.

Cosmin Ciocirlan

SignWise

hello@signwise.app

Visit us on social media:

[X](#)

[Instagram](#)

[YouTube](#)

[TikTok](#)

This press release can be viewed online at: <https://www.einpresswire.com/article/782917129>

EIN Presswire's priority is source transparency. We do not allow opaque clients, and our editors try to be careful about weeding out false and misleading content. As a user, if you see something we have missed, please do bring it to our attention. Your help is welcome. EIN Presswire, Everyone's Internet News Presswire™, tries to define some of the boundaries that are reasonable in today's world. Please see our Editorial Guidelines for more information.

© 1995-2025 Newsmatics Inc. All Right Reserved.