

eLeaP® CEO's Insightful Article on the Future of Work, Inspired by LinkedIn Executive's Keynote at LeadingBetter Summit

eLeaP shares key insights on adaptability, AI, and emotional intelligence in a new article inspired by LinkedIn's Daniel Roth at the LeadingBetter Summit.

LOUISVILLE, KY, UNITED STATES, April 14, 2025 /EINPresswire.com/ -- Don Weobong, CEO at eLeaP®, has published a compelling new thought leadership article, "The Future of Work Is Adaptive—and Deeply Human," based on the keynote address delivered by Daniel Roth, VP & Editor-in-Chief of LinkedIn, at the recent LeadingBetter Summit.



The article—featured on LinkedIn and available via Don's professional newsletter—offers key takeaways and reflections that are both timely and forward-looking. Drawing on Roth's personal career evolution, the piece explores themes such as the breakdown of linear career paths, the democratization of technology through AI, and the rising importance of emotional intelligence in leadership and team success.

“

We're all navigating shifts in what it means to lead, adapt, and contribute. I wanted to surface ideas that challenge assumptions and spark action, not just reflection.”

Don Weobong

“This article is part of a broader dialogue we're fostering at eLeaP,” said Don, CEO of the company. “As we help organizations navigate training, performance, and quality management, it's vital that we engage in the deeper

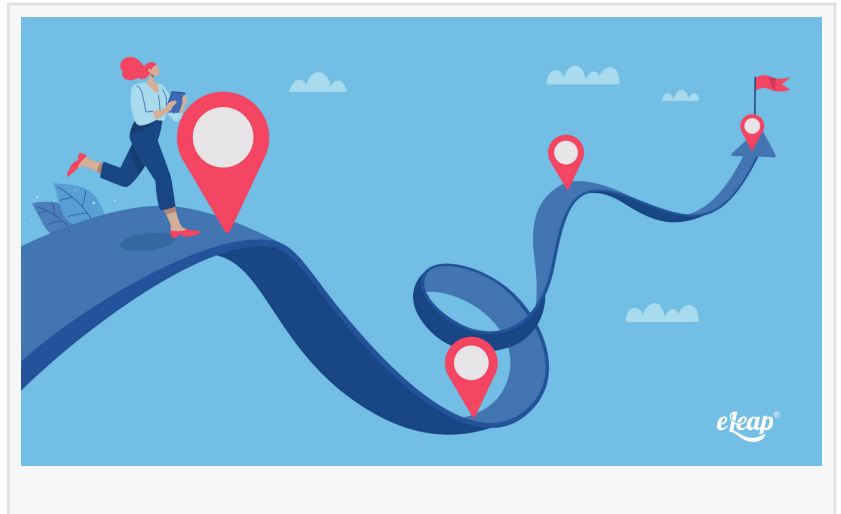
questions about how work is changing, and what skills and systems we need to stay ahead.”

A Timely Perspective from a Company Shaping the Future of Work

The article aligns closely with eLeaP's mission to empower organizations with tools that foster

growth, compliance, and continuous improvement across its three validated platforms:

* eLeaP LMS: The eLeaP [Learning Management System](#), featuring AI Assistant, provides organizations with an intuitive, cloud-based platform to manage, deliver, and track training. From onboarding and regulatory compliance to professional development and skills-based learning, the LMS supports: Instructor-led, on-demand, blended, and mobile learning, Skills, CEU tracking, SCORM support, and certifications, Quizzes, surveys, observation assessments, and OJT tracking, Integration with HRIS and third-party systems. Ideal for industries ranging from healthcare and manufacturing to public sector and regulated life sciences, eLeaP LMS offers unmatched flexibility with enterprise-grade scalability.



* eLeaP PMP: The eLeaP AI-powered [Performance Management Platform](#) (PMP) transforms outdated annual reviews into dynamic, real-time performance enablement systems. Built for continuous improvement and organizational alignment, the PMP includes: Customizable performance review templates with automated cycles, Goal and OKR tracking aligned with organizational priorities, Weekly task tracker to maintain execution focus, PulsePoint for real-time engagement insights, Skills tracking with manual and automated metrics scoring, 1-on-1s, check-ins, and customizable feedback flows. With AI-powered form suggestions, eNPS surveys, and competency dashboards, eLeaP PMP turns data into decisions, helping managers and teams drive measurable outcomes.

* eLeaP QMS: Built for compliance-intensive industries, the eLeaP [Quality Management System](#) helps organizations meet FDA, ISO, and GxP requirements while embedding a culture of continuous quality improvement. The platform supports: Document control with versioning, approval workflows, and audit trails, Design controls (User Needs, Inputs/Outputs, Verifications, Validations), Risk management including Hazards, Harms, and Hazardous Situations, CAPA, Nonconformance, Deviation, and Change Control event management, Tag-based classification, access controls, and global audit readiness. Validated for 21 CFR Part 11 compliance, eLeaP eQMS ensures integrity, traceability, and accountability across quality-critical processes—whether you're launching a new device or scaling manufacturing operations.

As organizations confront rapid technological disruption, workforce transformation, and heightened demands for agility, platforms like eLeaP offer more than just software—they provide a systematic approach to building resilient, future-ready teams.

Key Takeaways from the Article Include:

- * Why EQ is now a top-tier skill across industries
- * How to use AI to augment—not replace—human capability
- * Why professionals must reinvent themselves continuously
- * How platforms like LinkedIn can be used for authentic personal branding
- * Why organizations must stop defining people by their job descriptions
- * Why leaders must push teams to step outside job descriptions and embrace continuous learning

“It’s not about chasing trends—it’s about adopting habits that make us more curious, more capable, and more human,” Don notes in the piece. “At eLeaP, we see these lessons in action every day as we build systems that support transformation—not just transactions.”

Access the Full Article:

<https://www.linkedin.com/pulse/future-work-adaptiveand-deeply-human-don-weobong-3nnlc/>

For media coverage, thought leadership collaborations, speaking engagements, or to learn more about how eLeaP is shaping modern workforce capabilities, contact Mayra Veras at info@eleapsoftware.com.

About eLeaP®

eLeaP is a validated, cloud-based platform offering three integrated systems: Learning Management (LMS), Performance Management (PMP), and Quality Management (QMS). Serving regulated industries, public sector agencies, and innovative enterprises, eLeaP empowers organizations to drive excellence through structured learning, measurable performance, and audit-ready quality management.

Visit www.eleapsoftware.com to learn more.

Mayra Veras

eLeaP

+1 877-624-7226

[email us here](#)

This press release can be viewed online at: <https://www.einpresswire.com/article/802683252>

EIN Presswire's priority is source transparency. We do not allow opaque clients, and our editors try to be careful about weeding out false and misleading content. As a user, if you see something we have missed, please do bring it to our attention. Your help is welcome. EIN Presswire, Everyone's Internet News Presswire™, tries to define some of the boundaries that are reasonable in today's world. Please see our Editorial Guidelines for more information.

© 1995-2025 Newsmatics Inc. All Right Reserved.