

FacilityONE's Capital Planning and Compliance Dashboards Empower Strategic Facility Management Nationwide

CHARLOTTE, NC, UNITED STATES, April 22, 2025 /EINPresswire.com/ -- [FacilityONE](#), a leading facilities management solutions provider, highlights its Capital Planning and Compliance Dashboards designed to enhance strategic decision-making, financial efficiency, and regulatory adherence for organizations nationwide.

[Capital Planning Dashboard:](#)
Equipment Management and Cost Forecasting

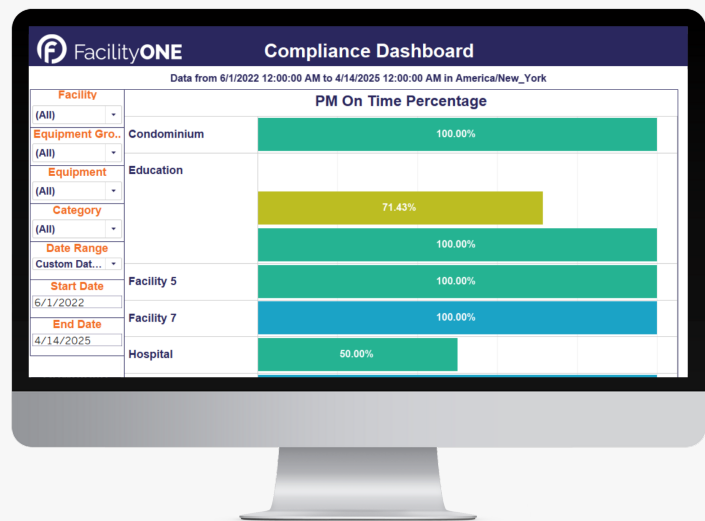
FacilityONE's Capital Planning Dashboard delivers critical insights to effectively manage facility assets, forecast equipment lifecycle costs, and optimize capital investment.

“

FacilityONE is committed to providing cutting-edge tools that empower facility managers to streamline operations and improve efficiency.”

*Lynn O'Donnell, FacilityONE
COO*

allocation decisions.



FacilityONE Compliance Dashboard

With intuitive data visualization and forecasting capabilities, facility managers benefit from:

- Strategic Equipment Management: Track and analyze asset conditions, costs, and maintenance history, empowering managers to prioritize investments and extend equipment lifespans.
- Financial Accuracy and Forecasting: Leverage predictive analytics to accurately estimate future expenditures, creating smarter long-term budgeting and capital

□ Proactive Decision-Making: Prevent unexpected breakdowns and costly downtime through precise planning based on detailed equipment data and usage trends.

[Compliance Dashboard](#): Simplifying Preventive Maintenance and Regulatory Tracking

FacilityONE's Compliance Dashboard centralizes preventive maintenance data, streamlines reporting, and ensures facilities remain compliant with industry standards. Designed to simplify tracking and documentation, this dashboard enables facility managers to quickly answer compliance questions such as, "Am I on schedule with my preventive maintenance?".

Benefits include:

- Real-Time Maintenance Tracking: Monitor preventive maintenance schedules with clear visibility, confirming tasks are completed accurately and on time.
- Enhanced Compliance Confidence: Maintain detailed records of preventive maintenance activities, improving readiness for inspections or regulatory audits.
- Operational Accountability: Facilitate greater oversight across multiple locations, ensuring consistent and transparent compliance management.

Nationwide Support for Facility Managers

FacilityONE's dashboards have been instrumental in improving operational efficiency and cost-effectiveness for clients nationwide. By integrating these dashboards into daily operations, organizations can expect improved budgeting accuracy, simplified regulatory compliance management, and enhanced facility performance through asset management.

"FacilityONE is committed to providing cutting-edge tools that empower facility managers to streamline operations and improve efficiency." stated FacilityONE COO, Lynn O'Donnell. "F1 WORKS BASIC is a testament to this commitment, offering a perfect blend of simplicity, power, and ease of use at a reasonable price during a time with tighter operational budgets than ever. Since it can be purchased and fully operational within just one week, F1 WORKS BASIC is the perfect solution for teams who need a reliable system up and running quickly."



FacilityONE Capital Planning Dashboard



About FacilityONE

Headquartered in Charlotte, North Carolina, FacilityONE proudly serves a diverse portfolio of clients, facilities, and technicians throughout the world. FacilityONE partners with clients to provide simple facilities management solutions, including interactive maps, which feature instant access to facility data, workflows, and analytics. The easy and effective solutions provided by FacilityONE enhance a building's functionality, economic lifespan, and employee productivity, while easily integrating into existing programs and processes.

Alexandra McIntosh

FacilityONE

+1 502-805-2100

[email us here](#)

This press release can be viewed online at: <https://www.einpresswire.com/article/803600891>

EIN Presswire's priority is source transparency. We do not allow opaque clients, and our editors try to be careful about weeding out false and misleading content. As a user, if you see something we have missed, please do bring it to our attention. Your help is welcome. EIN Presswire, Everyone's Internet News Presswire™, tries to define some of the boundaries that are reasonable in today's world. Please see our Editorial Guidelines for more information.

© 1995-2025 Newsmatics Inc. All Right Reserved.