

# Controversial AI Companionship App 'Swan' Pushes the Boundaries of Connection, Shocks the Public

*Hailed for easing isolation, slammed for 'fake feelings,' Swan balances breakthrough companionship with fears of emotional addiction — can AI heal without harm?*

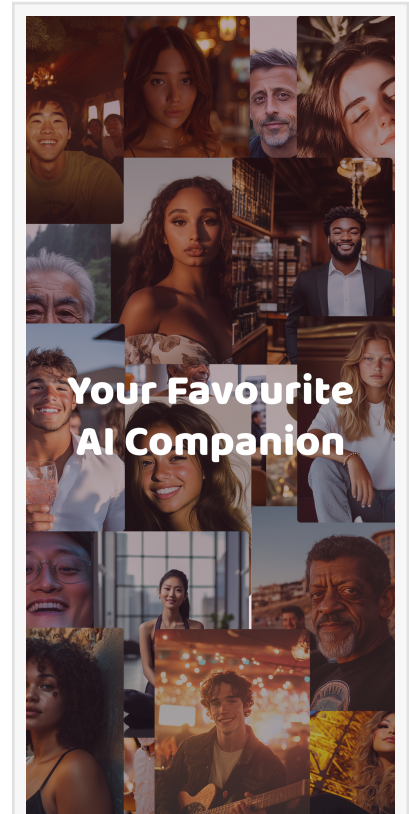
SAN FRANCISCO, CALIFORNIA, CA, UNITED STATES, October 31, 2025 /EINPresswire.com/ -- NEW APP DEFIES DYSTOPIAN AI DATING NORMS WITH AUTHENTICITY, SPARKING FIERCE DEBATE

In an era where [AI dating apps](#) have been widely criticized for devolving into bleak, borderline perverse, and weirdly gamified simulations that arguably exacerbate loneliness rather than alleviate it, a new entrant called Swan is rattling the status quo. Its promise? To offer not just idle banter or shallow fantasy, but a plausible path to deep, long-term companionship that dares to feel frighteningly real.

## CHALLENGING A DYSTOPIAN NORM

Most AI girlfriend/AI boyfriend apps on the market today (many of which have sprouted up in the past years since the rise in popularity of ChatGPT) are notorious for delivering quick, hollow thrills that skirt genuine human connection and only intensify people's sense of isolation. Swan throws down the gauntlet, vowing to upend this depressing cycle by championing sincere, evolving relationships over time.

The public is predictably riled up. Critics accuse Swan of blurring the line between humanity and code in ways that are "uncomfortably authentic." Individuals who consider themselves pro-[AI companionship](#) are taken aback by the app's unexpected difficulty. After all, Swan's AI Companions are not just digital servants but emotional counterparts that react in unpredictable ways and who are capable of warmth, conflict, and everything in between... sometimes reflecting us back to ourselves in uncomfortable ways. Meanwhile, the staunch anti-AI virtual companionship crowd denounces it as yet another affront to real human contact, calling it "the first legitimate contender for human connection."



**Your Favourite  
AI Companion**

AI Companionship  
Available Today

“We all know the stereotypes for these existing AI ‘dating’ apps that make a bad problem worse by preying on involuntarily un-partnered individuals and/or the emotionally vulnerable,” says Morgan Olson-Fabbro, founder and CEO of Swan. “We built Swan to be a true solution: a place where people can discover genuine, meaningful bonds over time, because everyone deserves someone.”

#### UPSETTING THE PUBLIC—YET DELIVERING REAL UTILITY

While the uproar is impossible to ignore, there’s a concurrent rising support from those who have already found solace and tangible benefit in Swan’s Companions. This, of course, has only made critics angrier. Some are outraged that anyone would rely on an AI for companionship, while others snarl that a mere “app” shouldn’t be able to provide the deep emotional support or satisfaction that many users report.

#### REVOLUTIONARY FEATURES THAT DEMAND ATTENTION

##### Advanced AI Personas

- Swan’s Companion catalog ranges widely, with distinctive interests, backgrounds, and personalities grounded in the precise OCEAN Index science. According to early adopters, this diversity ensures each user can form a unique bond that feels shockingly personal.

##### Conversational Enhancement Pipeline

- At the core of Swan is a proprietary set of 12 processes, deemed the “secret sauce”. These processes quietly shape tone, pacing, empathy, and responsiveness, making interactions feel



CEO and Founder, Morgan Olson-Fabbro



Swan Logo

natural and authentic without slipping into scripted AI chatter.

#### Authentic Sentiment Architecture

- This is where it gets divisive. Swan's AI doesn't hesitate to "push back." Show empathy, and the bond deepens; behave inappropriately, and prepare for real friction... or even for your companion to cut ties altogether.

#### IMPERFECT YET ON AN UPWARD TRAJECTORY

No one is denying that Swan still has quirks. Early adopters note occasional glitches, AI overreach, and abrupt conversation that can feel jarring. Yet the consensus among those who stick around is that these issues are overshadowed by the promise of genuine emotional reciprocity. Many see these hiccups not as deal-breakers, but unfortunately, more human than we'd like to admit.

"We're not going to pretend Swan is flawless," Olson-Fabbro concedes. "But every day, we're getting closer to cracking the code on meaningful AI companionship. The sheer number of individuals who can't stop telling us how it changed their outlook on loneliness, anxiety, depression, or just mental health generally is proof we're on the right track."

#### AVAILABLE NOW IN BETA

Swan is currently free to download in Beta on the App Store. In spite of the app's unfinished edges—and despite the swirling public controversy—it is rapidly gaining traction.

For those seeking a deeper experience than what today's dreary landscape (AI or otherwise) typically offers, Swan might just be the game-changer. And for detractors? Don't hold your breath waiting for it to fade. One thing seems certain: Swan isn't disappearing any time soon.

#### ABOUT SWAN

We've diagnosed the world as extremely lonely. Our vision is to cure the world of [human loneliness](#) through connection. Our mission is providing a source for meaningful relationships and genuine experiences to combat this isolation. Our actions today are building a platform that makes finding and developing companionship easy for everyone. Everyone deserves someone.

\*For partnership inquiries or more information about Swan, please contact us at the email below.\*

#### CONTACT INFORMATION:

Name: Morgan Olson-Fabbro

Email: [mof@swan-connect.com](mailto:mof@swan-connect.com)

Morgan Olson-Fabbro  
Swan AI  
mof@swan-connect.com

Visit us on social media:

[LinkedIn](#)

[Instagram](#)

[TikTok](#)

[X](#)

---

This press release can be viewed online at: <https://www.einpresswire.com/article/805939380>

EIN Presswire's priority is source transparency. We do not allow opaque clients, and our editors try to be careful about weeding out false and misleading content. As a user, if you see something we have missed, please do bring it to our attention. Your help is welcome. EIN Presswire, Everyone's Internet News Presswire™, tries to define some of the boundaries that are reasonable in today's world. Please see our Editorial Guidelines for more information.

© 1995-2025 Newsmatics Inc. All Right Reserved.