

# OKW's New RAILTEC BP Panel Enclosures Help Design Engineers Develop Individual Cabinet Mounted DIN Rail Devices

*OKW has launched the new RAILTEC BP, M22 DIN rail enclosures which are designed to help electronics engineers develop devices for control cabinets.*

BRIDGEVILLE, PA, UNITED STATES, May 1, 2025 /EINPresswire.com/ -- [RAILTEC BP M22](#) can accommodate plug headers (maximum 1 or 2 x 16-pin, 5.08, fixed or pluggable). It is ideal for a wide range of applications, notably individual DIN-rail-mounted measuring and control devices.

These fast-fit enclosures lock quickly and easily on to TH35 rails. They are available in three different side panel configurations: closed or with ventilation on one or two sides. Plug headers and other connections such as USB can be fitted to the closed sides.



New RAILTEC BP, M22 DIN rail enclosures are perfect for individual devices in control cabinets.

The 3.74" x 0.91" x 4.45" enclosures have been designed to a standard industrial size, making them compatible and interchangeable with other housings. They are molded from light gray (RAL 7035) PC (UL 94 V-0).

“

The new RAILTEC BP M22 DIN rail enclosures are perfect for individual electronic devices which will be located in control cabinets.”

*Sean Bailey*

Each enclosure is supplied as two case shells, two side panels, a front panel and two locking clips. The minimum order quantity is 10 pieces or multiples.

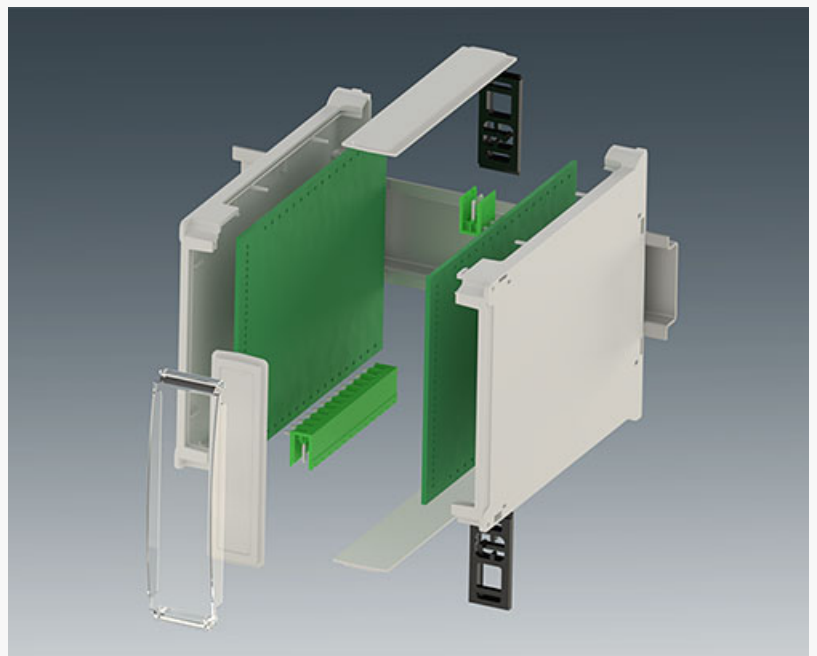
Accessories include plug headers, spare front and side panels, and a transparent hinged cover to protect the

front, controls, connectors and lighting elements.

OKW can supply [RAILTEC B DIN rail enclosures fully customized](#). Services include CNC machining, printing and laser marking.

[VIEW RAILTEC BP M22 ENCLOSURES >>](#)

SEAN J BAILEY  
OKW Enclosures Inc  
+1 412-220-9244  
[email us here](#)



RAILTEC BP, M22 models are available in three different side panel configurations: closed or with ventilation on one or two sides.



RAILTEC BP, M22 enclosures can be ordered with a clear hinged cover for protecting the controls and connections on the front panel.

This press release can be viewed online at: <https://www.einpresswire.com/article/806563741>

EIN Presswire's priority is source transparency. We do not allow opaque clients, and our editors try to be careful about weeding out false and misleading content. As a user, if you see something we have missed, please do bring it to our attention. Your help is welcome. EIN Presswire,

Everyone's Internet News Presswire™, tries to define some of the boundaries that are reasonable in today's world. Please see our Editorial Guidelines for more information.

© 1995-2025 Newsmatics Inc. All Right Reserved.