

Global IT Signs Managed Services Agreement with Alzheimer's Los Angeles

Partnership Aims to Enhance Operational Efficiency and Support Mission-Driven Technology Solutions for Alzheimer's Los Angeles

LOS ANGELES, CA, UNITED STATES, May 2, 2025 /EINPresswire.com/ -- Global IT, a top-tier provider of Managed IT Services in Los Angeles, has officially entered into a strategic Managed Services Agreement with Alzheimer's Los Angeles. This partnership is aimed at revolutionizing the nonprofit's technological capabilities, enhancing data security, and ensuring business continuity—ultimately empowering Alzheimer's Los Angeles to serve the community with greater efficiency and impact.

"In a world where uptime and data security mean everything, we've made it our mission to empower Alzheimer's Los Angeles with the tech they need to serve families with confidence." – Anthony Williams Raré, CEO, Global IT

Elevating Mission-Driven Work Through Smart Technology

Alzheimer's Los Angeles provides education, support and resources to individuals and families affected by Alzheimer's and other dementias. Facing the challenge of outdated infrastructure and third-party vendor sprawl, the organization sought a modern solution to support its growing operational needs.

Global IT's managed services solution includes:



Next-Gen Infrastructure:

Upgrading legacy systems with a secure, scalable cloud-first environment, enabling staff to work collaboratively and securely, whether on-site or remote.

Cybersecurity Optimization:

24/7 network monitoring, AI-driven threat detection, and incident response procedures now protect AGLA's sensitive data and systems.

Business Continuity via Backup & Disaster Recovery (BDR):

Global IT implemented redundant, geo-replicated cloud backup systems, setting clearly defined RTO (Recovery Time Objective) and RPO (Recovery Point Objective) metrics. Automated failover ensures that operations are maintained even in the face of disruptions.

Providing FREE education and support for people living with Alzheimer's and other dementias and their caregivers.



“

In a world where uptime and data security mean everything, we've made it our mission to empower Alzheimer's Los Angeles with the tech they need to serve families with confidence.”

Anthony Williams Raré

Compliance and Readiness: Preparing Alzheimer's Los Angeles for CMMC

To bolster trust and eligibility for future public sector partnerships, Alzheimer's Los Angeles is also on track with CMMC Level 2 compliance under Global IT's guidance. The Cybersecurity Maturity Model Certification framework ensures Alzheimer's Los Angeles maintains strict federal-grade cybersecurity controls, including:

Identity access management with role-based privileges

Ongoing penetration testing and vulnerability scans

Incident detection and mitigation strategies

Security training for all personnel

These enhancements future-proof Alzheimer's Los Angeles infrastructure while safeguarding the privacy of its constituents.

What This Means for the Alzheimer's Los Angeles Community

The mission of Alzheimer's Los Angeles is deeply human—supporting caregivers, educating communities, raising awareness, and connecting families with the tools they need. By upgrading its tech infrastructure, Alzheimer's Los Angeles now operates on a platform that is faster, more secure, and capable of scaling as demand grows.

"Global IT's expertise ensures we can stay focused on what matters—people living with the disease and their caregivers. Their partnership means we're secure, efficient, and ready for the future."

– Bret Schaefer, COO, Alzheimer's Los Angeles

About Global IT

Global IT is a premier provider of Managed IT Services in Los Angeles, specializing in fully integrated solutions for businesses and nonprofits. From cybersecurity to cloud strategy, Global IT empowers organizations to scale with confidence.

Address: 5150 Wilshire Blvd, Suite 400. Los Angeles, CA 90036

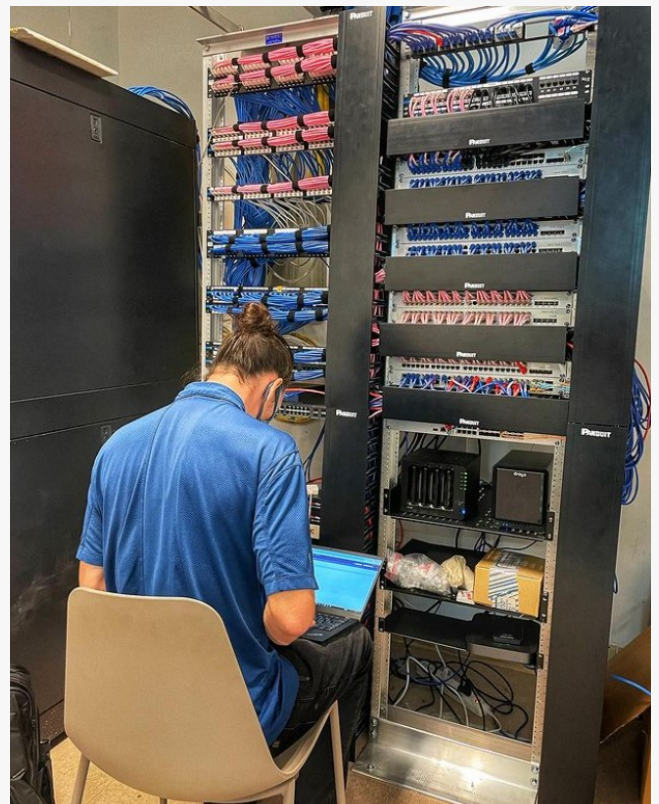
Website: www.globalit.com

About Alzheimer's Los Angeles

For more than 40 years Alzheimer's Los Angeles has served people throughout Los Angeles County. 100% of funds raised stay local, providing



Anthony Williams Raré, CEO of Global IT Communications



Global IT Communications, MSP, CSP, Cybersecurity for FQHC Organizations

free care and support for individuals and families. Alzheimer's Los Angeles focuses on care, support, advocacy, and local research. Alzheimer's is a devastating neurodegenerative disease that weakens memory and other cognitive and emotional functions. For more information, call our Helpline at 844.HELP.ALZ or visit

www.alzheimersLA.org

Address: 4221 Wilshire Blvd, Suite 290-5, Los Angeles, CA 90010

Website: www.alzgla.org

Media Contacts:

Heather Cooper Ortnr
Alzheimer's Los Angeles
President & CEO

hortner@alzla.org

(323) 930-6224

2922 Crenshaw Blvd, Suite 125 Los Angeles CA 90016

<https://www.alzheimersla.org/>

Thomas Bang

Global IT

Director of Marketing and Alliances

press@globalit.com

(213) 403-0111

5150 Wilshire Blvd, Suite 400. Los Angeles, CA 90036

<https://globalit.com/services/managed-it-msp-los-angeles/>

Thomas Bang

Global IT Communications, Inc

+1 213-403-0111

[email us here](#)

Visit us on social media:

[LinkedIn](#)

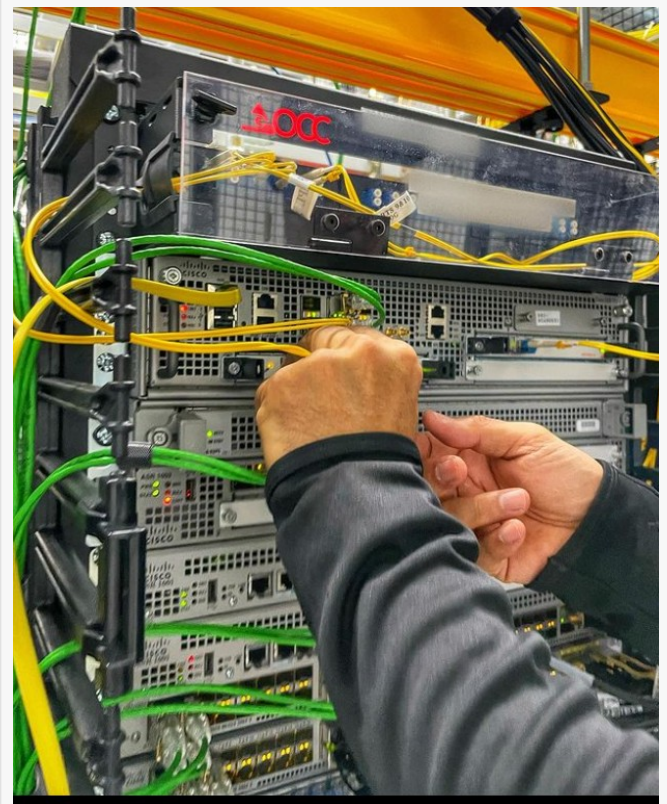
[Instagram](#)

[Facebook](#)

[YouTube](#)

[X](#)

[Other](#)



Global IT Communications, MSP, CSP,
Cybersecurity for FQHC Organizations -
Cabling Data Servers

This press release can be viewed online at: <https://www.einpresswire.com/article/808951635>

EIN Presswire's priority is source transparency. We do not allow opaque clients, and our editors try to be careful about weeding out false and misleading content. As a user, if you see something we have missed, please do bring it to our attention. Your help is welcome. EIN Presswire, Everyone's Internet News Presswire™, tries to define some of the boundaries that are reasonable in today's world. Please see our Editorial Guidelines for more information.

© 1995-2025 Newsmatics Inc. All Right Reserved.