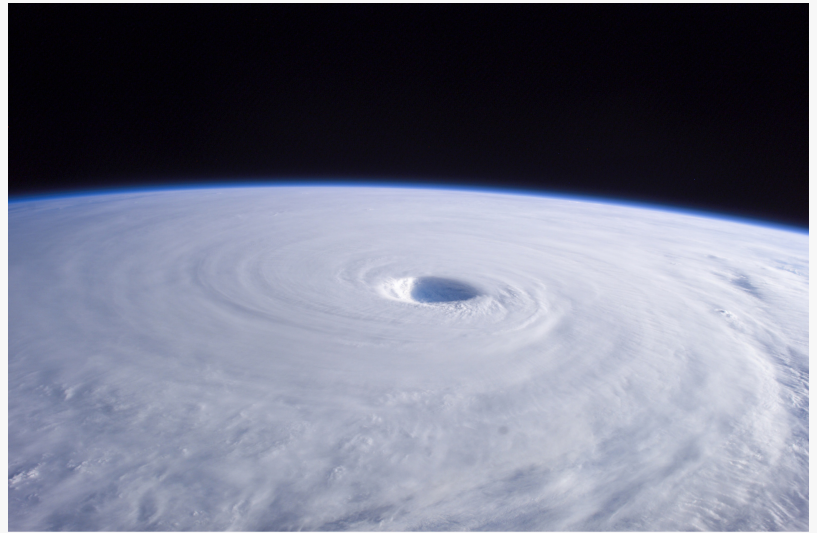


Gulf 52 Addresses Critical Need for Effective Evacuation Routes in Densely Populated Regions

HAMMOND, LA, UNITED STATES, May 8, 2025 /EINPresswire.com/ -- As urban centers across South Louisiana and the Gulf Coast continue to grow, the challenge of executing efficient evacuation strategies during emergencies has become increasingly urgent. [Gulf 52](#), a disaster preparedness and risk mitigation organization based in Hammond, Louisiana, has issued a formal call for updated planning and infrastructure review focused on evacuation logistics in high-density population zones.



Recent weather events, including hurricanes and flood-level storms, have exposed the vulnerabilities of current evacuation systems. Long delays on highways, inaccessible roadways in low-lying areas, and communication breakdowns continue to pose risks to public safety during natural disasters.

“

Traditional evacuation routes must be reevaluated, not only for capacity but for redundancy, traffic flow, and environmental resilience”

Earl Carr, Jr.

“Increased population density adds complexity to emergency evacuations,” said [Earl Carr, Jr.](#), president of Gulf 52. “Traditional evacuation routes must be reevaluated, not only for capacity but for redundancy, traffic flow, and environmental resilience.”

Population Density and Infrastructure Strain

Growth in suburban and exurban regions throughout Tangipahoa, Jefferson, Orleans, and St. Tammany parishes has resulted in higher vehicle counts per evacuation event. Limited roadway options, aging bridges, and narrow rural highways often become bottlenecks when tens of thousands attempt to exit a region within a short timeframe.

Evacuation models based on mid-20th-century data are no longer reflective of current demographic realities. Major evacuation corridors such as Interstates 10, 12, and 55 are routinely overloaded during emergencies, prompting concerns about the ability to evacuate vulnerable populations—including the elderly, those with mobility impairments, and residents without personal vehicles—in a timely and safe manner.



The Role of Micro-Evacuation Planning

In dense neighborhoods and urban centers, large-scale evacuations must be preceded by smaller, phased movements. Micro-evacuation strategies involve subdividing zones by neighborhood or region, allowing staggered departures to prevent congestion. These approaches require clearly defined communication protocols, coordination with transit systems, and integration of transportation resources such as buses and paratransit services.

Evacuation maps tailored to local conditions—including flood risk, topography, and road accessibility—play a critical role in ensuring effective outcomes. GIS technology, traffic flow modeling, and real-time data inputs from weather and transportation agencies are integral tools for planners engaged in this effort.

Communication and Preparedness at the Local Level

Effective evacuation requires coordination between municipal governments, emergency services, state agencies, and infrastructure planners. In densely populated regions, timely alerts and clear instructions can mean the difference between an orderly evacuation and life-threatening gridlock.

Emergency management protocols must incorporate culturally competent messaging, multilingual alerts, and accessible formats to ensure comprehension across diverse communities. Additionally, public awareness campaigns should be conducted year-round to familiarize residents with evacuation zones, shelter locations, and staging areas.

Infrastructure Needs and Environmental Adaptation

Hurricane-prone areas along the Gulf Coast face increasing environmental volatility due to sea-level rise, land subsidence, and saltwater intrusion. These conditions place further stress on evacuation infrastructure. Roads that were once reliable during emergencies now face higher risks of inundation and erosion.

Investments in elevated roadways, hardened bridges, drainage improvements, and coastal protection features can mitigate some of the vulnerabilities tied to environmental conditions.

However, planners emphasize that infrastructure improvements alone cannot solve the problem. Comprehensive evacuation readiness requires systemic coordination that spans urban planning, transportation logistics, emergency management, and community outreach.

Vulnerable Populations and Equitable Access

Low-income residents, individuals with disabilities, and those without access to private transportation represent a significant portion of the population in many high-density areas. Evacuation planning must account for these individuals through designated pickup points, accessible transit vehicles, and medical transport support.

Community-based organizations, religious institutions, and schools often play a critical role in organizing evacuation assistance for underserved populations. Government agencies and private sector partners are encouraged to strengthen these networks through resource-sharing, training, and contingency planning.

“Equity must be central to evacuation planning,” said Carr. “Every resident, regardless of income or ability, must have a clear, actionable path to safety.”

Regional Cooperation and Data-Driven Decision Making

Evacuation routes rarely fall within a single jurisdiction. Effective plans require inter-parish cooperation, regional coordination, and alignment with state-level evacuation orders. Centralized data systems, mobile applications, and interoperable communication channels enhance the ability of multiple agencies to respond in real time.

Route clearance operations, fuel distribution logistics, and reentry planning must also be included in broader evacuation frameworks. Post-disaster transportation planning is equally critical to avoid confusion during return phases and to support recovery efforts in damaged areas.

Call for Action

Gulf 52 encourages regional stakeholders—including transportation planners, emergency management directors, municipal leaders, and community groups—to participate in comprehensive evacuation readiness assessments. Workshops, tabletop exercises, and scenario planning events are currently being scheduled to identify gaps, prioritize investments, and coordinate regional strategies for effective evacuation in dense population areas.

Morgan Thomas

Rhino Digital, LLC

+1 504-875-5036

[email us here](#)

Visit us on social media:

[Facebook](#)

This press release can be viewed online at: <https://www.einpresswire.com/article/810549063>

EIN Presswire's priority is source transparency. We do not allow opaque clients, and our editors try to be careful about weeding out false and misleading content. As a user, if you see something we have missed, please do bring it to our attention. Your help is welcome. EIN Presswire, Everyone's Internet News Presswire™, tries to define some of the boundaries that are reasonable in today's world. Please see our Editorial Guidelines for more information.

© 1995-2025 Newsmatics Inc. All Right Reserved.