

Max Spann Real Estate & Auction Co. Announces Live Auction of 45.5± Acres in Washington Borough, Warren County, NJ

*Residential Development with Sewer
Capability Opportunity—Live Auction
with Simulcast Bidding on June 17th*

WASHINGTON BOROUGH, NJ, UNITED
STATES, May 15, 2025

/EINPresswire.com/ -- [Max Spann Real
Estate & Auction Co.](#), in cooperation

with Higgenbotham Auctioneers,
announces the upcoming live auction
of 45.5± acres of residential
development land located on Nunn

Avenue in [Washington Borough](#), Warren County, New Jersey. This residential development tract
will be offered in a live, in-person auction with simulcast bidding on Tuesday, June 17, 2025, at
the Courtyard by Marriott in Lebanon, NJ.



45.5+/- Acres, Washington Boro, NJ

“

With the potential to access
the public sewer system, it is
an ideal site for the
residential developer.”

*Max Spann Jr, President &
CEO of Max Spann RE &
Auction Co.*

The property is zoned residential and has a settlement
agreement with the Borough allowing up to 50 single
family residences. Located just minutes from Washington
Borough’s revitalized Main Street, this site offers easy
access to a variety of boutique shops, restaurants, and
essential local services. For outdoor enthusiasts, nearby
parks, hiking trails, and recreational facilities make this
location ideal for future homeowners seeking both lifestyle
and convenience.

“This parcel is the largest privately owned tract in the Borough,” said Max Spann Jr., President of
Max Spann Real Estate & Auction Co. “With the potential to access the public sewer system, it is
an ideal site for the residential developer.”

Strategically positioned near major highways including Routes 31, 57, and 46, and Interstates 78
and 80, the property provides excellent regional connectivity for commuters and businesses

alike.

Auction Details:

The live auction will take place Tuesday, June 17, 2025 at the Courtyard by Marriott located at 300 Corporate Drive in Lebanon, NJ, with simulcast bidding available for remote participants. For the [Property Information Package](#), zoning details, and bidder registration, visit www.maxspann.com or call 888-299-1438. Please note: no on-site previews will be conducted.

About Max Spann Real Estate & Auction Co.

Headquartered in Annandale, NJ, with offices in New York and Florida, Max Spann Real Estate & Auction Company is America's premier real estate auction and advisory firm. For more than 50 years, Max Spann has delivered accelerated marketing solutions tailored to unique real estate assets across the country. Learn more at www.maxspann.com.

Max Spann Jr.

Max Spann Real Estate & Auction Co
+1 908-735-9191

[email us here](#)

Visit us on social media:

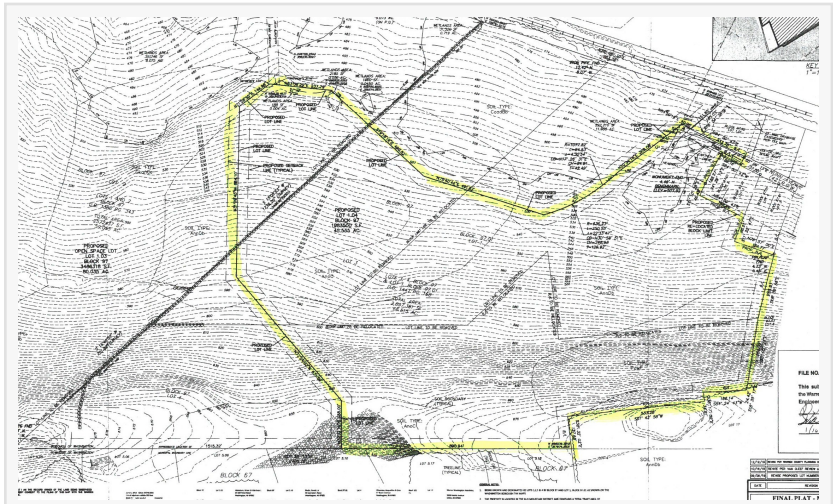
[LinkedIn](#)

[Instagram](#)

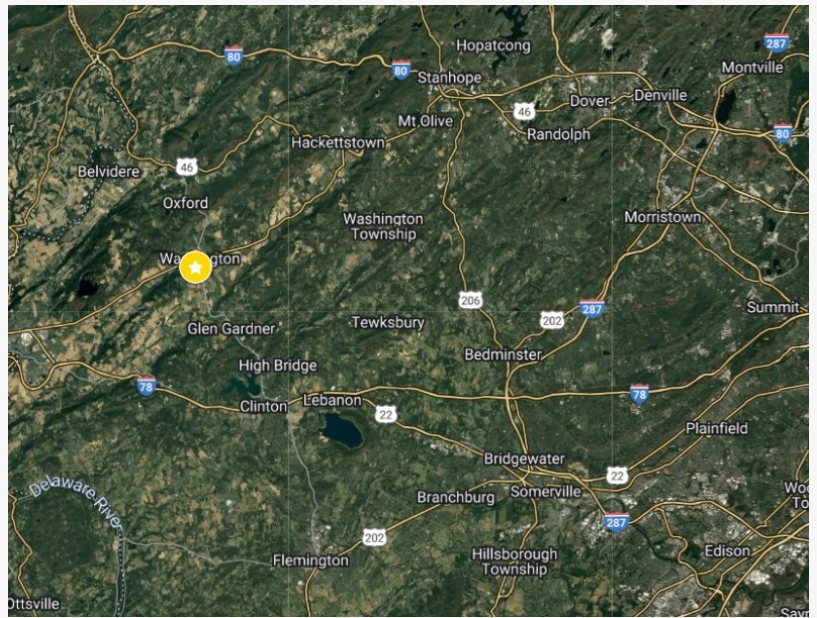
[Facebook](#)

[YouTube](#)

[X](#)



Residential Development Tract



Washington Borough, Warren County, NJ

This press release can be viewed online at: <https://www.einpresswire.com/article/812604726>

EIN Presswire's priority is source transparency. We do not allow opaque clients, and our editors try to be careful about weeding out false and misleading content. As a user, if you see something we have missed, please do bring it to our attention. Your help is welcome. EIN Presswire, Everyone's Internet News Presswire™, tries to define some of the boundaries that are reasonable

in today's world. Please see our Editorial Guidelines for more information.

© 1995-2025 Newsmatics Inc. All Right Reserved.