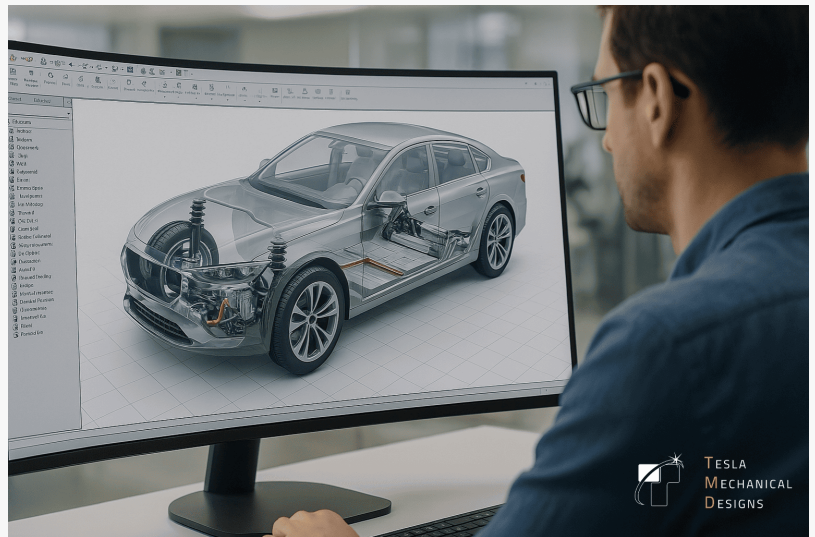


Integrated 3D Modeling and Manufacturing Emerge as Key Differentiator in Global Supply Chain Resilience

Integrated 3D Modeling, Drafting, and Manufacturing Services Drive Supply Chain Resilience and Accelerate Product Development for Global Manufacturers

CA, UNITED STATES, May 19, 2025

/EINPresswire.com/ -- As global industries demand ever-greater efficiency and precision, Tesla Mechanical Designs is setting a new benchmark by offering a seamlessly integrated suite of 3D modeling, manufacturing, and [mechanical drafting services](#). This initiative aims to empower manufacturers, OEMs, and product developers worldwide to streamline workflows, reduce time-to-market, and maintain a competitive edge in an increasingly complex landscape.



3D Modeling - 3D CAD Modeling

“

Our integrated model eliminates delays and miscommunication, helping clients achieve greater efficiency, quality, and innovation by uniting design and manufacturing disciplines.”

*Divya Dave, Asst. Director,
Tesla Mechanical Designs*

□□□□□□□□ □□□□□□□□□□'□ □□□□ □□□ □□□-□□-□□□□ □□□□□□□□□□□□
□□□□□□□□

In today's volatile manufacturing environment, companies face mounting pressure to innovate rapidly, minimize errors, and optimize costs. Tesla Mechanical Designs addresses these challenges by combining advanced 3D modeling, meticulous mechanical drafting, and state-of-the-art manufacturing support under one roof. This holistic approach ensures that clients can move from concept to production with unmatched speed and confidence.

"Our integrated service model is designed for organizations that can't afford delays or miscommunication between design and manufacturing

teams," said Kuldeep Gajjar, Director at Tesla Mechanical Designs. "By uniting these critical

disciplines, we help clients unlock new levels of efficiency, quality, and innovation."

Exploded view of a complex assembly:

Exploded view of a complex assembly

Tesla Mechanical Designs' [3D modeling services](#) leverage the latest CAD platforms to deliver highly accurate digital representations of products and assemblies. Whether clients require 2D-to-3D conversion, complex assembly modeling, or photorealistic renderings, the company's expert team ensures every model is optimized for manufacturability and real-world performance.

Exploded view of a complex assembly:

Exploded view of a complex assembly

Accurate, detailed drawings remain the backbone of successful engineering projects. Tesla Mechanical Designs offers a full spectrum of mechanical drafting services, including detailed manufacturing drawings, assembly drawings, general arrangement (GA) drawings, and fabrication documentation. These deliverables ensure seamless communication between design, engineering, and production teams, reducing costly errors and rework.

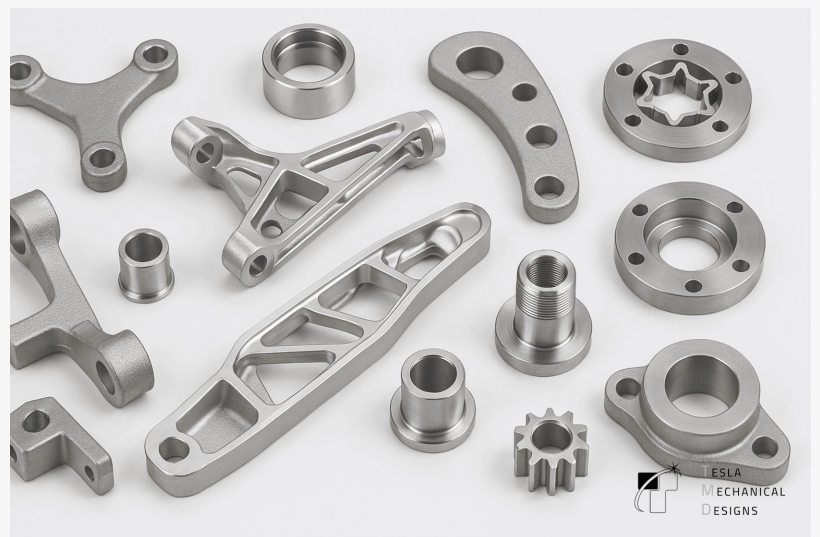
Exploded view of a complex assembly:

Exploded view of a complex assembly

With a robust network of vetted vendors and a decade of experience, Tesla Mechanical Designs provides comprehensive [manufacturing services](#), ranging from prototyping and additive manufacturing to CNC machining and sheet metal fabrication. The company's ISO 9001:2015-certified facilities and rigorous quality control protocols guarantee that every component meets the highest industry standards.



A detailed 3D exploded view of a sophisticated electromechanical system, revealing its internal workings



Custom Manufacturing Services

Recent industry studies underscore the value of integrated engineering solutions. According to market analysts, companies that unify design, drafting, and manufacturing processes can reduce product development cycles by up to 30% and lower production costs by as much as 20%.

Tesla Mechanical Designs' clients have reported faster project turnaround, improved product quality, and greater flexibility in responding to market shifts.

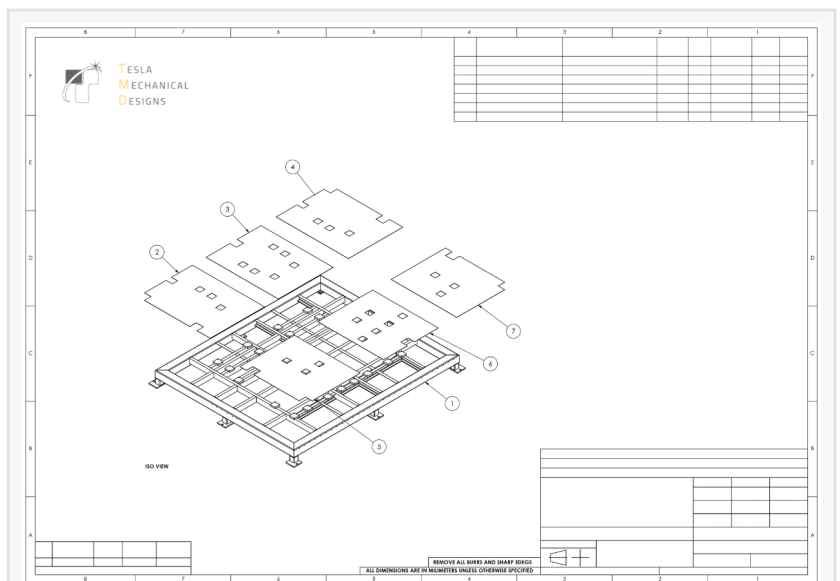
The company's global reach, serving clients across the USA, Canada, the UK, Europe, and Australia, ensures that solutions are tailored to diverse regulatory and technical requirements. Engagement models include fixed project cost, dedicated resources, and hourly consulting, providing flexibility for organizations of all sizes.

Tesla Mechanical Designs operates under strict confidentiality agreements and employs a rigorous, multi-step engineering process: from need assessment and strategic planning to implementation, quality checks, and final delivery.

The company's team of over 60 skilled engineers brings deep expertise in mechanical, industrial, and process design, as well as IoT and simulation.

As manufacturers worldwide embrace digital transformation and Industry 4.0, Tesla Mechanical Designs is committed to remaining a trusted partner for innovation.

The company continues to invest in advanced technologies, skilled personnel, and global best practices to ensure clients are prepared for the challenges and opportunities ahead.



Assembly Drawings - Tesla Mechanical Designs



Tesla Mechanical Designs - Where Design Meets Innovation

"We believe the future of manufacturing belongs to those who can integrate design, engineering, and production seamlessly," added Kuldeep Gajjar. "Tesla Mechanical Designs is proud to help our clients engineer a better world-one project at a time."

□□□□□ □□□□□ □□□□□□□□□□ □□□□□□□□

Tesla Mechanical Designs is a global engineering design and automation company with close to a decade of experience in delivering world-class 3D modeling, manufacturing, and drafting solutions. Focusing on quality, speed, and innovation, the company serves clients in multiple industries across North America, Europe, and Asia-Pacific.

Divya Dave
Tesla Mechanical Designs
+1 416-907-9430

[email us here](#)

Visit us on social media:

[LinkedIn](#)

[Bluesky](#)

[Instagram](#)

[Facebook](#)

[X](#)

[Other](#)

This press release can be viewed online at: <https://www.einpresswire.com/article/814010822>

EIN Presswire's priority is source transparency. We do not allow opaque clients, and our editors try to be careful about weeding out false and misleading content. As a user, if you see something we have missed, please do bring it to our attention. Your help is welcome. EIN Presswire, Everyone's Internet News Presswire™, tries to define some of the boundaries that are reasonable in today's world. Please see our Editorial Guidelines for more information.

© 1995-2025 Newsmatics Inc. All Right Reserved.