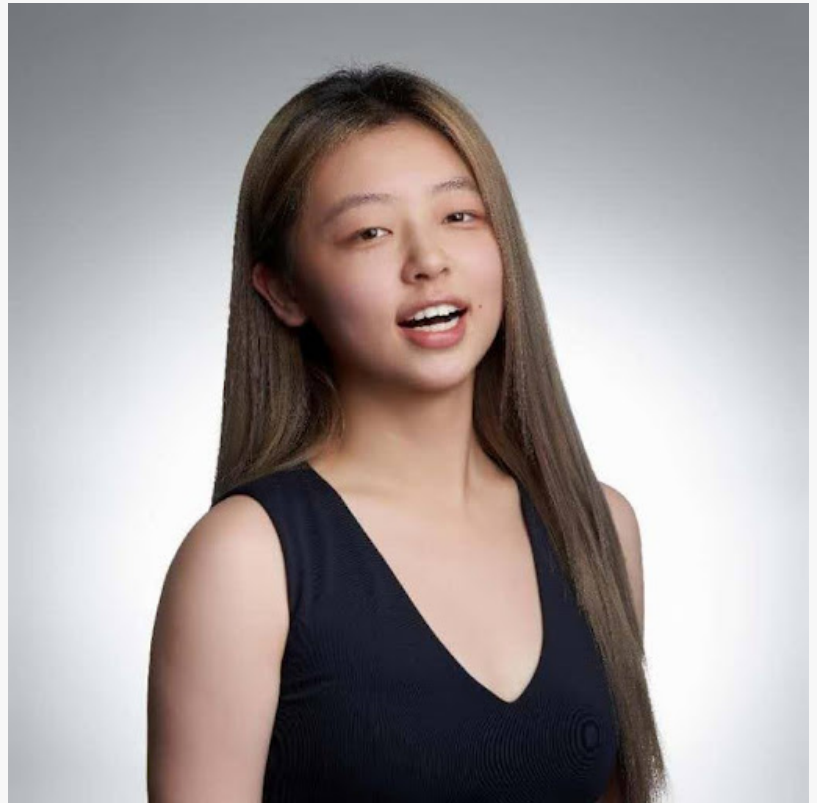


Producer Qingyun Pan Announces Data-Informed Creative Direction for New Film *Loser is Winner*

*Qingyun Pan shares how data-informed choices shaped the development, casting, and visual style of *Loser is Winner*, a female-led, realism-based sports drama*

BEIJING, CHINA, May 28, 2025

/EINPresswire.com/ -- [Film producer Qingyun Pan](#) announces her strategic involvement in the upcoming feature film *Loser is Winner*, a female-led sports drama shaped by data-driven decision-making. From early concept development to post-production planning, Pan utilized market research, audience trends, and performance data to inform critical creative choices, including character development, casting, and cinematic direction. Her approach aims to increase the film's relevance and resonance with contemporary audiences while maintaining the emotional authenticity of a realism-based narrative.



Qingyun Pan, A Producer of 'Loser is Winner'

Data-Driven Decisions from the Outset

At the outset of *Loser is Winner*, Qingyun Pan turned to extensive market data to support key decisions about the project's viability and direction. She analyzed recent trends in realism-based films, female coming-of-age stories, and sports-themed narratives, combining box office data, audience feedback, and online sentiment analysis to classify genre acceptance levels. The data revealed growing interest in realism and female-centric perspectives, with such works resonating strongly with specific demographics. Based on these findings, Pan identified promising market space for *Loser is Winner*, a story about an ordinary woman achieving a breakthrough in the world of sports. These insights became a core foundation for her continued

advancement of the project.

Script Revisions to Enhance Realism and Relatability

During the script development phase, Pan proposed a series of suggestions centered on character design and story structure. In the original draft, the protagonist was portrayed as a “troubled girl” who, after being involved in fights, was forced into a boxing gym to turn her life around. Pan believed this setup lacked broader real-world resonance.

To enhance credibility and real-life relevance, she recommended revising the character's background to that of an ordinary rural woman raised in a male-dominated household. Instead of being forced into boxing, she enters the sport after fleeing an arranged marriage and stumbling upon the opportunity by chance. Pan argued that this adjustment offered a more grounded behavioral logic while reflecting the social realities of today's youth.

Director Nan Guang ultimately embraced this narrative revision and worked with the screenwriting team to further refine the character's journey, aligning it more closely with the tone of realism the film sought to convey.

Casting with Precision: Matching Role and Skill

Pan was involved in multiple rounds of auditions and evaluations for casting. Given the film's numerous boxing training and combat scenes, the lead role demanded high levels of physical fitness and acting capability. Accordingly, professional skills became a top priority in the casting process.

The final lead, Li Ran, had a martial arts background and prior experience in action roles. Pan noted that her appearance and demeanor closely matched the character's design and that she was fully capable of handling the demanding training and performance tasks. During auditions, Li completed all assigned scenes successfully and later undertook several weeks of physical and stunt training.

According to the production team, Li demonstrated strong adaptability during filming and effectively met the role's emotional and physical performance requirements.

Cinematic Suggestions Focused on Emotion and Visual Strategy

During production, Pan contributed a series of suggestions related to visual style and camera language, aimed at supporting the narrative rhythm and emotional development of the characters. For example, she recommended using distinct color palettes at different stages of the protagonist's journey: cooler tones during periods of hardship to emphasize a sense of suppression, and warmer tones during growth phases to foster a sense of optimism.

She also encouraged the use of tracking shots and drone footage to enhance realism and spatial depth. These suggestions were partially adopted after evaluation by the cinematography team and implemented in select scenes.

As one of the film's climactic moments, the boxing matches were shot using multi-angle techniques to heighten tension and emotional impact. Pan supported these sequences by coordinating production resources and scheduling, ensuring that these technically demanding scenes were completed smoothly.

Production Management Driving Execution

As executive producer, Pan was also responsible for the overall coordination of the project's timeline and budget. She helped design a multi-dimensional progress monitoring system that tracked key indicators such as shooting schedules, cost control, and resource allocation. She maintained regular communication with the production management team to coordinate and resolve unexpected challenges.

During the promotional preparation phase, she assisted the marketing team in collecting social media feedback and adjusting the release schedule of promotional materials based on trending topics. For instance, after the initial round of promotional content was released, themes like "female boxing" and "inspirational growth" gained significant attention. In response, the team rolled out corresponding short video content to boost the film's outreach.

Conclusion

Loser is Winner, a realistic drama focusing on female empowerment and sports inspiration, integrated data analysis, script development, strategic casting, and refined production management throughout its creation. [As executive producer, Qingyun Pan](#) was deeply involved in multiple key stages, from project approval to on-set execution. She emphasizes that during both the creative and production processes, data can serve as a valuable reference tool, helping the creative team increase the project's manageability and overall quality.

Sophie Caldwell
EchoLine Media
SophieCaldwell@studioatlasmedia.com

This press release can be viewed online at: <https://www.einpresswire.com/article/816215348>

EIN Presswire's priority is source transparency. We do not allow opaque clients, and our editors try to be careful about weeding out false and misleading content. As a user, if you see something we have missed, please do bring it to our attention. Your help is welcome. EIN Presswire, Everyone's Internet News Presswire™, tries to define some of the boundaries that are reasonable in today's world. Please see our Editorial Guidelines for more information.

© 1995-2025 Newsmatics Inc. All Right Reserved.