

# Custom Heavy-Duty Hinges: Tailored Industrial Solutions by Kiesler Machine Inc.

*Custom heavy-duty hinges built for high-load, high-security, and high-performance environments across military, aerospace, and industrial sectors.*

PALMYRA, IN, UNITED STATES, June 26, 2025 /EINPresswire.com/ -- Kiesler Machine Inc., a leading U.S. manufacturer of precision-engineered components, continues to set the standard for custom [heavy-duty hinges](#) engineered for consistent performance in the most demanding environments. Widely employed across critical industries, including military, aerospace, manufacturing, and high-security sectors, these hinges are engineered with strength and durability in mind.

For over four decades, Kiesler Machine has focused on fabricating superior products. Our heavy-duty hinges support substantial loads while maintaining smooth, consistent operation under high stress and frequent use.

## Key Features of Kiesler's Custom Heavy-Duty Hinges

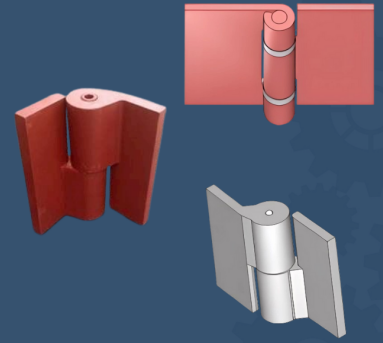
Kiesler Machine offers a wide range of hinges including butt, mortise, barrel, non-mortise, and [pivot hinges](#). Every hinge is built with pride and tailored to exact specifications. Whether it is a blast-resistant gate, armored door, secure facility, or aerospace compartment, Kiesler Machine's hinges are designed to secure doors and gates in extreme environments. These hinges stand out due to the following features:

1. **High Load Capacity:** Designed to support extreme door weights, up to 40,000 lbs. and radial loads up to 25,000 lbs., of heavy gates, blast doors, and large industrial enclosures.



CUSTOM HEAVY-DUTY HINGES  
ENGINEERED FOR  
DEMANDING APPLICATIONS

- Made in USA
- Supports up to 40,000 lbs
- Material: 304 or 316 Stainless Steel, Carbon Steel



Custom Heavy Duty Hinges

2. Custom Sizes: Available in heights between 5" and 16" and weights ranging from 4 lbs. to 477 lbs., ensuring a perfect fit for any application.
3. Material Options: Offered in 304 or 316 stainless steel for superior corrosion resistance and longevity and carbon steel for superior strength.
4. Mounting Options: You can choose between weld-on designs or pre-drilled holes for bolt-on designs.
5. Precision Bearings: Integrated high-quality bearings to support smooth, frictionless operation and extended hinge life.
6. Tamper-Resistant Design: Built with security-focused components like hardened alloy steel hinge pins and concealed fasteners to deter unauthorized access and tampering.
7. Precision Bearings: Each hinge integrates high-quality bearings to ensure low friction, minimal wear, and smooth, long-term operation.
8. Finishes: Finishes like nickel or zinc plating and galvanization help improve durability and aesthetic appeal of custom heavy-duty hinges.

"Kiesler Machine is dedicated to providing hinges that exceed industry standards for performance, durability, and security," said Barry Kiesler, Co-owner at Kiesler Machine, Inc. "Our motto, 'Smoother than the Rest, Guaranteed,' reflects our commitment to precision engineering and customer satisfaction. We work closely with clients to understand their unique requirements, challenges and deliver custom hinges that enhance the safety and efficiency of their operations."

#### Proven Across Industries

Kiesler Machine's custom heavy-duty hinges have been successfully deployed in:

1. Military and Defense: Bunkers, military vehicles, naval vessels, weapon systems, blast doors, and armored vehicles
2. Aerospace: Equipment enclosures and access doors
3. Manufacturing: Machinery housings, large gates, and robotic enclosures
4. High-security Facilities: Data centers, prisons, and infrastructure hubs

Proudly manufactured in the USA at their well-equipped Palmyra, Indiana facility, Kiesler Machine's hinges adhere to stringent Military Specifications (MIL-SPEC) and are designed to withstand extreme conditions, including shock, vibration, and corrosive elements. For more information, contact Kiesler Machine Inc. at 888-565-6610, email [info@kieslermachine.com](mailto:info@kieslermachine.com), or visit [www.kieslermachine.com](http://www.kieslermachine.com).

Barry Kiesler  
Kiesler Machine Inc.  
+1 812-364-6610  
[info@kieslermachine.com](mailto:info@kieslermachine.com)

Visit us on social media:

[LinkedIn](#)

[Facebook](#)

[X](#)

---

This press release can be viewed online at: <https://www.einpresswire.com/article/818895111>

EIN Presswire's priority is source transparency. We do not allow opaque clients, and our editors try to be careful about weeding out false and misleading content. As a user, if you see something we have missed, please do bring it to our attention. Your help is welcome. EIN Presswire, Everyone's Internet News Presswire™, tries to define some of the boundaries that are reasonable in today's world. Please see our Editorial Guidelines for more information.

© 1995-2025 Newsmatics Inc. All Right Reserved.