

# Experience Visual Impairment Through an Interactive Web Simulator

*Real-time simulation of glaucoma and cataracts aims to raise awareness in education and welfare sectors*

TOKYO, JAPAN, June 13, 2025

/EINPresswire.com/ -- We are pleased to announce the launch of the “Visual Impairment Experience Simulator,” a free, web-based tool that allows users to visually experience how glaucoma and cataracts affect vision in real time.



This interactive simulator reproduces the world as seen through the eyes of individuals with age-related eye conditions, offering a deeper understanding of what it means to live with visual impairment.

“

We created this simulator to bridge the gap between visible and invisible experiences of vision loss. It's a tool for empathy and education.”

*Yuji Kondo, Developer of the Visual Impairment Experience Simulator*

---

## See the World Through Different Eyes

Age-related visual impairments such as glaucoma and cataracts affect millions of people worldwide. Yet, the true nature of these conditions is often hard to convey to those without lived experience. This simulator allows users to simulate various symptoms—including loss of peripheral vision (glaucoma) and blurred or glaring vision (cataracts)—by adjusting severity levels, helping users

grasp how vision deteriorates over time.

\*Note: The progression of symptoms is modeled in a forward direction only; reversing symptom severity is not supported, as both glaucoma and cataracts are progressive and irreversible in nature.\*

---

Designed for Use in Education,  
Healthcare, and Welfare

This tool is intended as a visual  
education resource for:

- Healthcare professionals
- Educators and students
- Municipal staff and welfare workers
- Anyone involved in elderly care or disability services

It can be used in school lessons, staff  
training sessions, community outreach,  
or awareness workshops to foster  
empathy and understanding for people  
with visual impairments.

---

## Key Features

- Runs directly in your browser, no  
installation required
- Simulates both glaucoma and cataract symptoms
- Adjustable severity levels using intuitive controls
- Independent vision settings for each eye
- Uses real-life imagery for realistic visual feedback

---

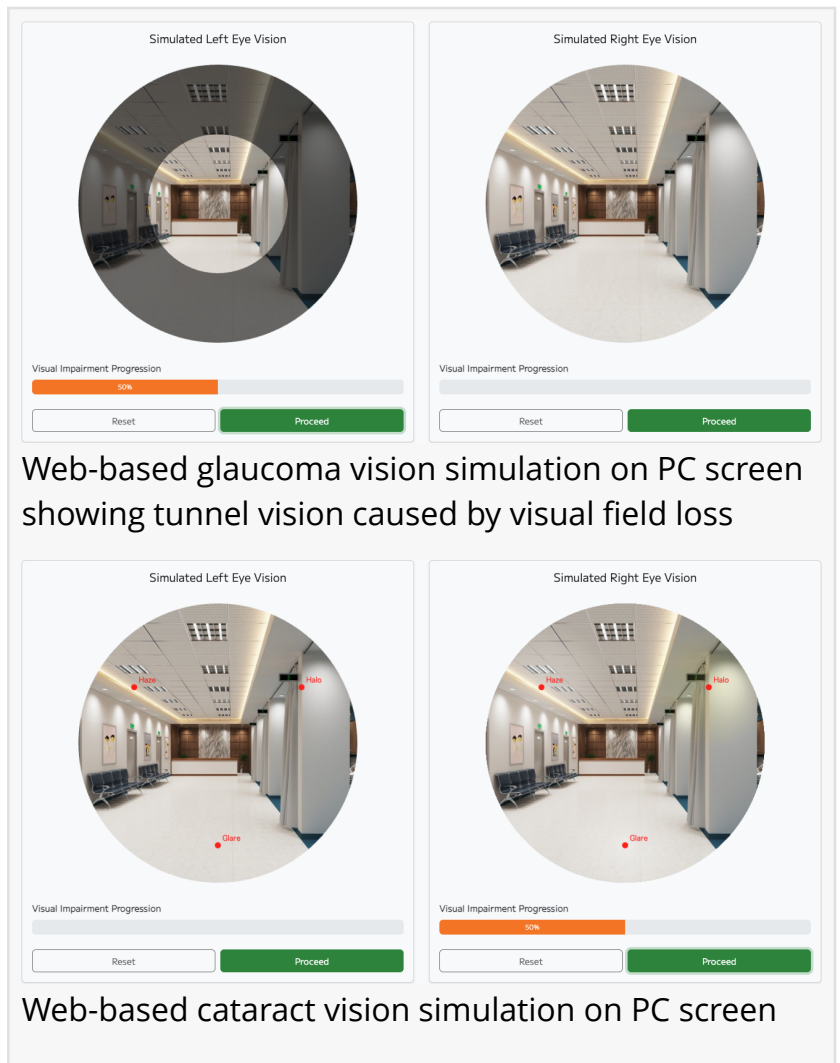
Try It Now (Demo Page)

□ <https://visual-impairment-experience-simulator.org/glaucoma-circular-simulator> (For  
Glaucoma)

□ <https://visual-impairment-experience-simulator.org/cataract-simulator> (For Cataract)

---

Looking Ahead



We are currently working on refining the glaucoma model to more accurately reflect how vision deteriorates from the periphery inward. Future improvements will focus on greater realism in symptom progression, aiming to support more effective educational use in accessibility and elder care contexts.

Yuji Kondo

Visual Impairment Experience Simulator

[contact@visual-impairment-experience-simulator.org](mailto:contact@visual-impairment-experience-simulator.org)

Visit us on social media:

[LinkedIn](#)

[Instagram](#)

[Facebook](#)

[X](#)

---

This press release can be viewed online at: <https://www.einpresswire.com/article/821883147>

EIN Presswire's priority is source transparency. We do not allow opaque clients, and our editors try to be careful about weeding out false and misleading content. As a user, if you see something we have missed, please do bring it to our attention. Your help is welcome. EIN Presswire, Everyone's Internet News Presswire™, tries to define some of the boundaries that are reasonable in today's world. Please see our Editorial Guidelines for more information.

© 1995-2025 Newsmatics Inc. All Right Reserved.