

BIM Staff Augmentation from Tesla Outsourcing Services Enhances Project Delivery for AEC Firms

Flexible Staff Augmentation Empowers AEC Firms with Scalable BIM, CAD Support, Coordination, and Project Delivery

TX, UNITED STATES, June 17, 2025

/EINPresswire.com/ -- Tesla

Outsourcing Services LLP, a recognized leader in Building Information Modeling (BIM) Services, provides Staff Augmentation services tailored for the Architecture, Engineering, and Construction (AEC) sector. This service

is designed to empower AEC companies with flexible access to skilled architects, engineers, and BIM modelers, enabling accurate Construction Documentation, enhanced [BIM Coordination](#), and streamlined project delivery, thereby providing operational agility in a challenging construction environment.

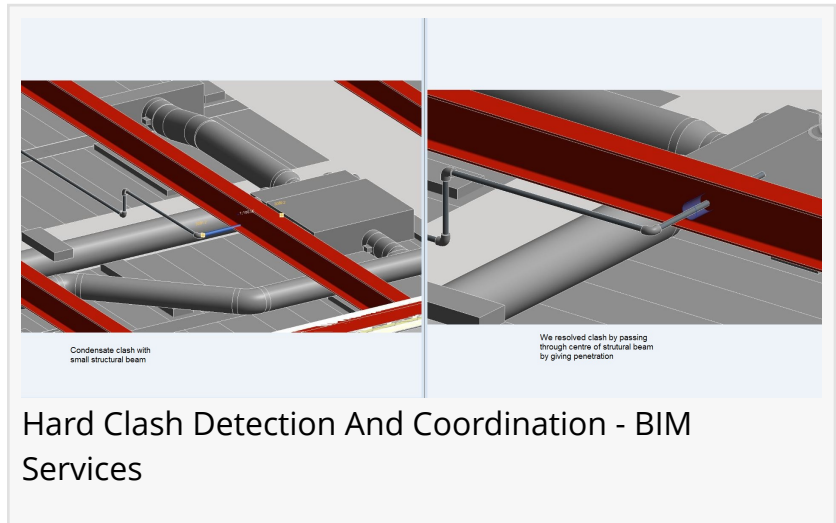
“

Staff augmentation gives AEC firms instant BIM expertise, scalable teams, and quality—without hiring overhead.”

Divya Dave, Assistant Director, Tesla Outsourcing Services LLP

As AEC companies face mounting project complexity and fluctuating workloads, the need for adaptable workforce solutions has become critical. Tesla Outsourcing Services LLP’s Staff Augmentation model allows firms to extend their teams with pre-trained BIM professionals, providing immediate expertise without the long-term costs and administrative burdens of traditional hiring.

By offering rapid deployment of dedicated BIM and CAD talent, we help our clients maintain project momentum and respond swiftly to changing project demands,” said Ketan Poojara, CEO of Tesla Outsourcing Services LLP. “Our staff augmentation solution is built to deliver quality, consistency, and direct control for every client engagement.”



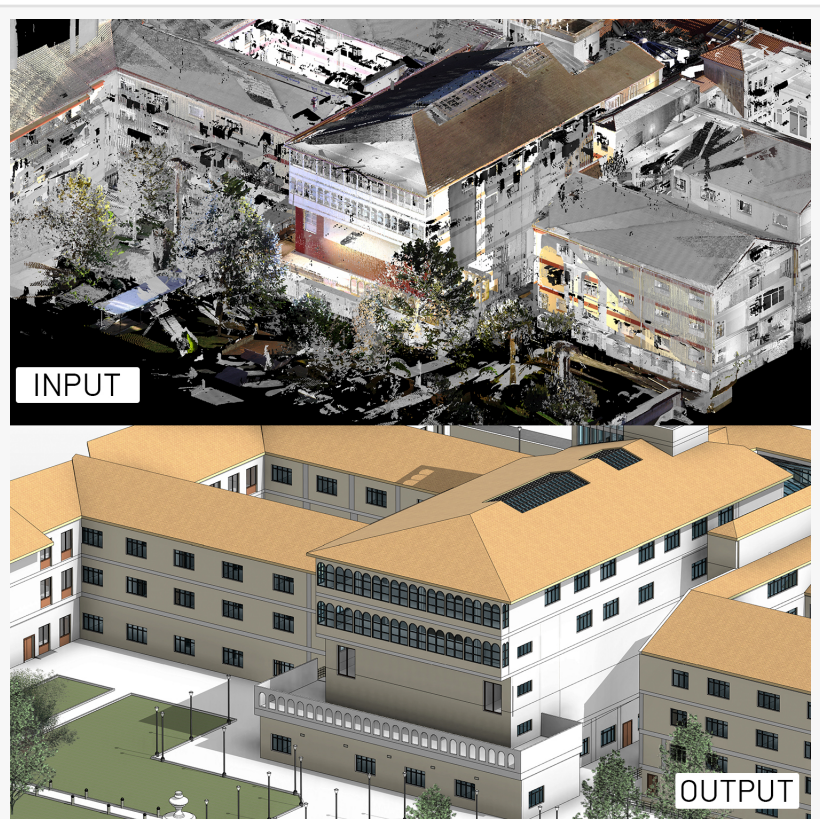
Point Cloud Data to BIM Model

- Rapid Onboarding: Deploy expert architects and BIM engineers within 48 hours of request, minimizing project delays and downtime.
- Direct Project Oversight: Client project managers interact directly with offshore teams, ensuring seamless communication and quality assurance throughout the project lifecycle.
- Consistent Quality: Dedicated professionals remain with each project for its duration, eliminating repetitive training and ensuring reliable deliverables.
- Flexible Engagement: Choose from quarterly, semi-annual, annual, or hourly buy-out models to match resource needs with project pipelines.
- Reduced Administrative Burden: Clients avoid the HR, compliance, and long-term employment costs of in-house hiring while accessing global BIM expertise.

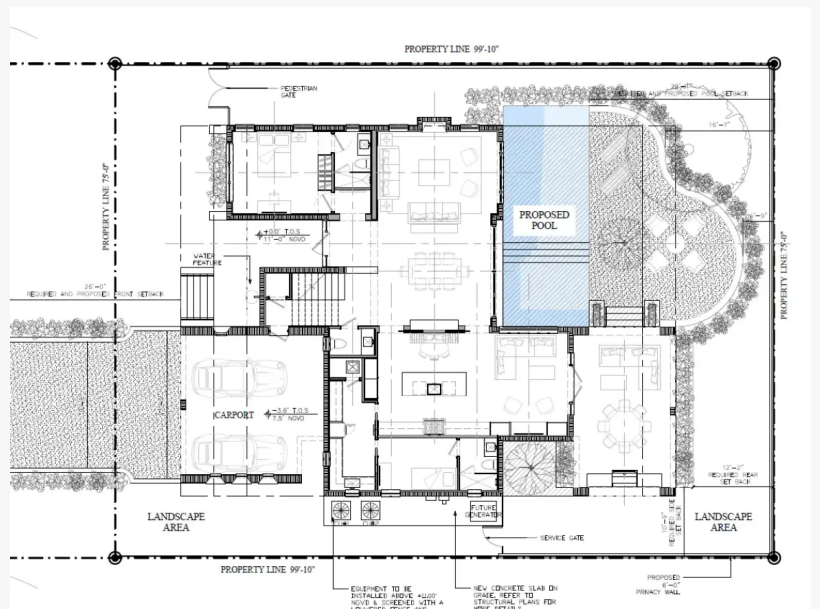
Construction Documentation of Residential Building - Floor Plan

Tesla Outsourcing Services LLP's staff augmentation covers a comprehensive range of BIM and CAD verticals:

- BIM Coordination and Clash Detection
- Architectural, Structural, and MEP BIM Modeling
- Scan to BIM
- 2D Drafting and Construction Drawings
- Shop Drawings and Steel Detailing
- 4D and 5D BIM Modeling
- 3D Visualization, Animation, and Walkthroughs
- Code Compliance and Planning Drawings



Point Cloud Data to BIM Model



Construction Documentation of Residential Building - Floor Plan

These services are supported by proficiency in industry standard software such as Autodesk Revit, AutoCAD, and Navisworks, ensuring compatibility with client workflows and project requirements.

Our staff augmentation services are designed to provide you with the resources you need to complete your project on time and on budget.

Tesla Outsourcing Services LLP's staff augmentation has already contributed to the successful delivery of major projects, including the development of construction drawings for La Quinta Jackson Hotel, Coit & Main Retail, Harley Davidson Event Centre, Buena Vista Mexican Restaurant, and Ambulatory Surgery Center. These projects highlight the company's ability to scale resources and deliver technical excellence across hospitality, healthcare, and infrastructure sectors.

Our staff augmentation services are designed to provide you with the resources you need to complete your project on time and on budget.

- Dedicated Resource Arrangement: Hire full-time or part-time BIM professionals for fixed durations, ideal for organizations with steady project inflows.
- Hourly Buy-Out Option: Purchase a set number of hours for short-term or intermittent needs, with the flexibility to carry forward unused hours.

Our staff augmentation services are designed to provide you with the resources you need to complete your project on time and on budget.

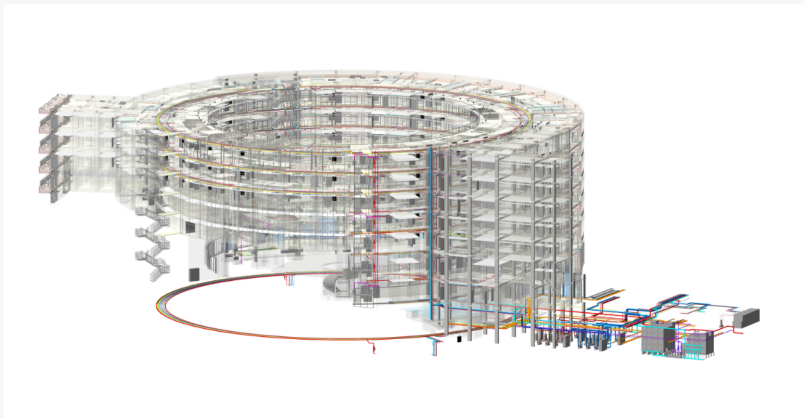
[Staff augmentation for BIM services and CAD services](#) reflects a broader industry shift toward agile, project-based resource management. By enabling AEC firms to scale teams up or down in response to project demands, Tesla Outsourcing Services LLP is helping clients optimize budgets, reduce risks, and maintain high standards of project delivery.

As construction projects become more complex and timelines more demanding, flexible access to specialized BIM talent will be essential for firms seeking to maintain a competitive edge. Tesla Outsourcing Services LLP's staff augmentation solution positions AEC companies to meet these challenges with confidence and efficiency.

Our staff augmentation services are designed to provide you with the resources you need to complete your project on time and on budget.



Leveraging Tesla Outsourcing Services' BIM Error Detection And Coordination for Seamless Designs



BIM Coordination Of Commercial Complex

Tesla Outsourcing Services LLP is a global provider of [BIM Services](#), specializing in BIM Coordination, Scan to BIM, and Staff Augmentation for AEC firms worldwide. With a proven track record across diverse sectors and a commitment to technical excellence, they empower clients to achieve project success through scalable, high-quality staffing solutions. For more information, visit the official website @ <https://www.teslaoutsourcingservices.com>. BIM & CAD Portfolio: 5000+ Projects Delivered Worldwide - <https://www.teslaoutsourcingservices.com/portfolio.php>

Divya Dave

Tesla Outsourcing Services

+1 416-907-9430

[email us here](#)

Visit us on social media:

[LinkedIn](#)

[Bluesky](#)

[Instagram](#)

[Facebook](#)

[YouTube](#)

[X](#)

[Other](#)

This press release can be viewed online at: <https://www.einpresswire.com/article/822984483>

EIN Presswire's priority is source transparency. We do not allow opaque clients, and our editors try to be careful about weeding out false and misleading content. As a user, if you see something we have missed, please do bring it to our attention. Your help is welcome. EIN Presswire, Everyone's Internet News Presswire™, tries to define some of the boundaries that are reasonable in today's world. Please see our Editorial Guidelines for more information.

© 1995-2025 Newsmatics Inc. All Right Reserved.