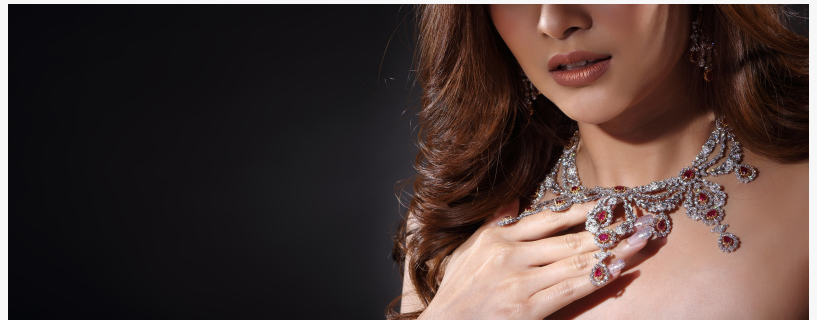


Timely Jewelry Inspections: When to DIY and When to Seek Professional Evaluation

METAIRIE, LA, UNITED STATES, July 4, 2025 /EINPresswire.com/ -- [KenWorks](#), a jewelry service provider based in Metairie, Louisiana, is releasing updated guidelines to help jewelry owners determine when to rely on DIY inspections and when to schedule professional evaluations. These recommendations are designed to preserve jewelry integrity, prevent gemstone loss, and extend the lifespan of heirlooms and everyday pieces.



Kenworks

[Ken Bowers](#), owner of KenWorks, emphasizes that minor wear signs may be addressed at home, but certain risks require professional attention. “Regular DIY checks can catch loose prongs or minor wear, but only a trained eye can assess structural integrity and metal fatigue,” said Bowers. “Timely, expert evaluation helps avoid damage that can arise during everyday wear or routine cleaning.”

“

Regular DIY checks can catch loose prongs or minor wear, but only a trained eye can assess structural integrity and metal fatigue”

Ken Bowers

1. Routine DIY Checks at Home

Self-inspection can be conducted safely and effectively using common household tools. A standard weekly or monthly routine may include:

Prong and bezel inspection: Holding a stone against light while gently tapping the metal allows detection of movement or light gaps.

Clasp and hinge test: Opening and closing clasps and joints to ensure smooth operation.

Metal surface review: Examining bands, pins, or settings for dents, scratches, or thinning areas.

Visual gemstone inspection: Identifying scratches or visible inclusions that may indicate wear or

potential damage.

These activities require minimal time and can help identify early wear signs before more serious issues arise.

2. When to Engage a Professional

Certain issues exceed typical DIY assessment and necessitate professional tools, training, or expertise:

Microscopic prong fatigue: Slight bends or cracks in prongs may escape visual detection but still pose risk of gemstone drop-out.

Underside or hidden damage: Rings and pendants conceal wear at setting bases, gallery arches, or inside bezels that are invisible without magnification.

Frame warping or tension loss: Engagement rings and heavy rings can gradually lose shape or tension. Professionals use precision instruments to detect and correct misalignments.

Precious metal testing: Gold or platinum alloys can thin over time. Accurate assessment often depends on X-ray fluorescence (XRF) or acid testing equipment.

Clasp or hinge wear: Jewelry with multiple moving components—such as bracelets or pendant chains—requires tight tolerances to prevent failure under tension or daily stress.

Post-repair quality assurance: After polishing, resizing, or stone resetting, professional evaluation confirms restoration integrity and ensures no new issues.

For antique or delicate pieces, professional care is essential. Intricate filigree or period settings may require advanced techniques to prevent irreversible damage.

3. Recommended Inspection Frequency

Suggested inspection intervals help balance prevention with practicality:

Jewelry Type	DIY Inspection	Professional Inspection
Everyday rings/bracelets	Monthly	Annually
Engagement/wedding rings	Monthly	Every 6 months
Antique or heirloom pieces	Monthly	Every 3–4 months
Wedding bands/classic studs	Quarterly	Annually
Statement necklaces/pendants	Monthly	Every 6 months

More frequent evaluation may be needed in environments involving chemical exposure, manual labor, or frequent wear. Regular inspection supports early detection and reduces need for extensive repairs.

4. Benefits of Regular Maintenance

Preventative care maintains jewelry condition and value:

Gemstone security: Loose stones often start with minute prong movement; early correction prevents loss.

Metal longevity: Untreated thinning or deformation can lead to cracks or breakage.

Cost efficiency: Minor repairs typically cost less than replacements or major restoration.

Appearance retention: Polishing and polishing finishes preserve shine and prevent excessive wear.

Historical preservation: Vintage or heritage pieces maintain their patina and structural authenticity.

Professional inspections often include complimentary cleaning, lubrication of mechanical components, and removal of superficial surface debris.

5. Choosing a Reliable Jewelry Professional

A qualified jewelry inspection involves:

Magnification tools: Loupes or microscopes for close examination of metal and gemstone conditions.

Instrument calibration: Tension gauges, metal testers, and ultrasonic cleaners provide precise diagnostics.

Access to parts and techniques: Ability to match metals, remake missing components, and perform delicate soldering or resetting.

Clear documentation: Issuing inspection reports and recommendations ensures traceability for annual records or insurance purposes.

KenWorks in Metairie provides comprehensive diagnostics using industry-standard equipment and transparent reporting protocols.

6. Special Scenarios Requiring Immediate Attention

Some observations should prompt prompt professional evaluation:

Sudden gemstone movement during wear

Visible gaps around prongs or setting edges

Noticeable thinning of bands or shanks

Discoloration or metal flaking from internal structures

Damage from impact or accident

Resistance or looseness in clasps and hinges

Early service prevents permanent damage and supports the longevity of valuable pieces.

7. Scheduling Inspections and Service

Arranging professional evaluations can be done in-studio or by appointment. Services typically include:

Full cleaning and polish

Prong tightening or building

Shank reshaping and tension adjustment

Clasp/hook replacement and mechanism lubrication

Alloy testing and re-topping (for gold plating when required)

Service frequency depends on individual wear patterns and personal usage context.

Ken Bowers underscores that reliable jewelry maintenance protects sentimental value and investment with minimal disruption. "A brief, focused inspection once or twice yearly can save significant time and expense in the long run," said Bowers.

Routine care—both at home and through professional service—ensures jewelry remains in strong, elegant condition. Jewelry holds personal importance far beyond material value; safeguarding that importance requires timely attention to small details.

Morgan Thomas

Rhino Digital, LLC

+1 504-875-5036

[email us here](#)

Visit us on social media:

[Facebook](#)

This press release can be viewed online at: <https://www.einpresswire.com/article/828483873>

EIN Presswire's priority is source transparency. We do not allow opaque clients, and our editors try to be careful about weeding out false and misleading content. As a user, if you see something we have missed, please do bring it to our attention. Your help is welcome. EIN Presswire, Everyone's Internet News Presswire™, tries to define some of the boundaries that are reasonable in today's world. Please see our Editorial Guidelines for more information.

© 1995-2025 Newsmatics Inc. All Right Reserved.