

# GPRS Adds Sewer Visualization in Latest SiteMap Upgrade

*The Update Adds Ammunition to Platform Providing a Single Source of Truth, Aboveground and Below*

MAUMEE, OH, UNITED STATES, July 9, 2025 /EINPresswire.com/ -- [GPRS](#) announced a major update to its infrastructure visualization, GIS, and delivery platform, [SiteMap](#)® (patent pending) with the addition of the new SiteMap Sewer Layer.

Now, customers who utilize the company's NASSCO-compliant CCTV video pipe inspection services to scope their sanitary and storm sewer pipelines can see every geolocated pipe segment, including flow direction, pipe material, and cross bores (where other utilities have breached wastewater pipes), and more inside the platform application. So,

“

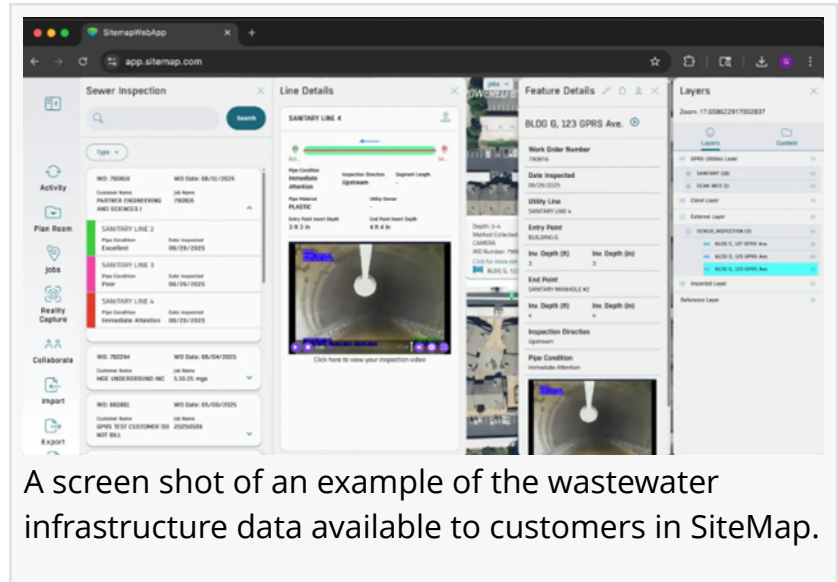
We can give them concrete evidence showing them exactly where in the world their sewer lines are... they have access in the palm of their hand 24/7.”

*Jason Schaff, GPRS Chief Strategy Officer*

customers can assess conditions, see each defect, catalogued by severity and type, and view in-app video of their entire wastewater system.

“Two of the biggest problems we’ve been trying to tackle for our customers, especially those managing large campuses or municipalities, are how we can give them concrete evidence showing them exactly where in the world their sewer lines are, and what condition they are in, so that they have access to that data in the palm of their hand 24/7.” said GPRS Chief Strategy Officer Jason Schaff.

“We believe [SiteMap’s Sewer Layer](#) update solves both issues; not only can you see direct video of every pipe segment and its condition, each line is geolocated with real-time kinematic positioning (RTK), so you can be certain of the location of every pipe in your wastewater infrastructure. And since it’s all delivered via SiteMap, you have complete access and control of



A screen shot of an example of the wastewater infrastructure data available to customers in SiteMap.

your wastewater system data from anywhere, anytime you need it, to plan upgrades, expansions, and repairs.”

What is SiteMap?

SiteMap® is GPRS’ industry-leading infrastructure visualization and GIS facility management platform, designed to provide its customers with a secure, shareable, single source of truth for all of their physical as-builts and assets – aboveground and below.

The company hard-launched the software application in 2024 and installed their first major upgrade – SiteMap 2.0 – in the Spring of 2025. That update included new in-app reality capture features among other functionality improvements. Because the application is the delivery platform for GPRS-captured data and deliverables, every GPRS customer receives complimentary SiteMap Personal access.



Jason Schaff , GPRS Chief Strategy Officer

About GPRS: GPRS is the nation’s largest company dedicated to Intelligently Visualizing the Built World® for clients throughout the United States. Founded by Matt Aston in 2001 with a single ground penetrating radar unit, GPRS has grown to encompass every area of construction safety and facility management across virtually every industry with an elite team of expert Project Managers in every major U.S. market.

Jason Schaff

GPRS

+1 303-945-5415

[email us here](#)

Visit us on social media:

[LinkedIn](#)

[Instagram](#)

[Facebook](#)

[YouTube](#)

[X](#)

---

This press release can be viewed online at: <https://www.einpresswire.com/article/829624474>

EIN Presswire's priority is source transparency. We do not allow opaque clients, and our editors try to be careful about weeding out false and misleading content. As a user, if you see something we have missed, please do bring it to our attention. Your help is welcome. EIN Presswire,

Everyone's Internet News Presswire™, tries to define some of the boundaries that are reasonable in today's world. Please see our Editorial Guidelines for more information.

© 1995-2025 Newsmatics Inc. All Right Reserved.