

Tesla Outsourcing Services Champions Resilience: Pioneering BIM for a Sustainable Infrastructure Future

Tesla Outsourcing Services pioneers resilient infrastructure with BIM for sustainable, future-proof development.

FL, UNITED STATES, July 17, 2025

/EINPresswire.com/ -- In a rapidly evolving global landscape marked by increasing urbanization, climate change impacts, and the urgent need for sustainable development, the demand for robust and adaptable infrastructure has never been more critical. Traditional infrastructure

development methodologies are often ill-equipped to meet these complex challenges, leading to inefficiencies, cost overruns, and vulnerabilities. Recognizing this pressing need, Tesla Outsourcing Services, a leading provider of comprehensive engineering and [BIM Services](#),

“

Our commitment to BIM ensures future-proof infrastructure. It builds resilient, intelligent systems, safeguarding our collective future, translating into increased efficiency for our clients.”

Ketan Poojara, CEO of Tesla Outsourcing Services LLP



BIM Modeling for Airport

reinforced its commitment to leveraging Building Information Modeling (BIM) as the cornerstone for developing highly resilient, efficient, and sustainable infrastructure projects worldwide.

Tesla Outsourcing Services has long been at the forefront of digital transformation within the Architecture, Engineering, and Construction (AEC) industry. With a profound understanding that the future of infrastructure lies in its ability to withstand and recover from various stressors—be it environmental, economic, or operational—the company is championing BIM as the essential framework for creating assets that are not just

structurally sound but also intelligently designed for longevity and adaptability. This strategic focus positions Tesla Outsourcing Services as a key enabler for governments, developers, and contractors aiming to future-proof their critical infrastructure investments.

Infrastructure serves as the backbone of societies, powering economies, supporting communities, and enabling basic services—from electricity and water to transport and health care. Today, this backbone faces unprecedented threats from extreme weather, natural disasters, and rapid urbanization.

“Resilient infrastructure is not merely a goal; it’s an urgent need,” reiterates Ketan Poojara, CEO of Tesla Outsourcing Services. He emphasizes that conventional practices are no longer sufficient, stating, “Waiting for disaster to strike before taking action doesn’t serve us. Our adoption of BIM allows for proactive risk mitigation, smarter design, and rapid recovery, ensuring our infrastructure can withstand whatever the future holds.”

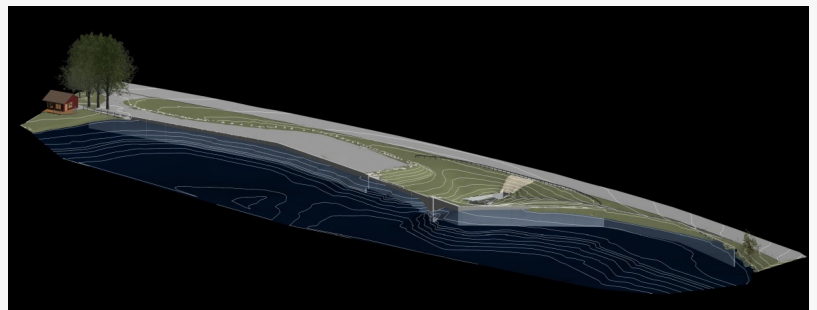
Building Information Modeling is a digital revolution, offering end-to-end visibility across the lifecycle of infrastructure projects—from conception to operation and beyond. Tesla Outsourcing Services leverages BIM to:

Building Information Modeling is a digital revolution, offering end-to-end visibility across the lifecycle of infrastructure projects—from conception to operation and beyond. Tesla Outsourcing Services leverages BIM to:

- Enhance Risk Assessment & Planning: By simulating multiple scenarios — including floods, earthquakes, and fires — BIM arms planners and engineers with the data they need to make informed, rapid decisions.



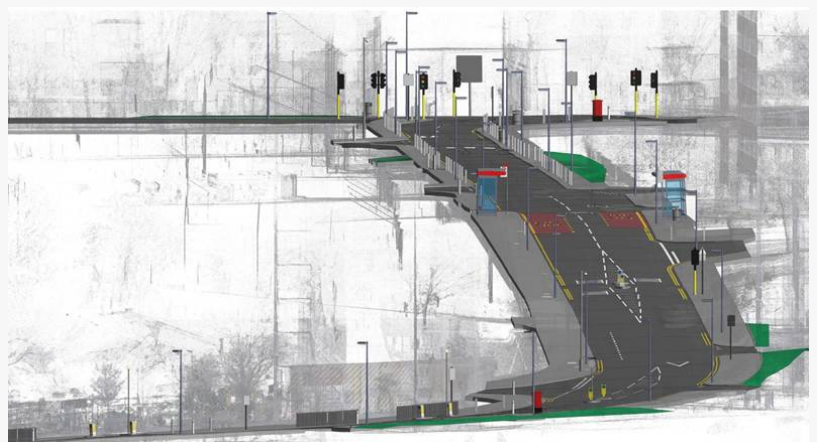
BIM for Bridge



BIM Modeling for Dam



BIM Modeling for Roads and Bridges



BIM for Roads

- **Promote Sustainability:** BIM empowers design teams to compare alternative solutions, integrating energy efficiency and carbon reduction as foundational principles—making every project a resilience investment.
 - **Streamline Disaster Recovery & Risk Reduction:** In the aftermath of disruptions, BIM’s real-time data access and scenario-based analyses minimize downtime and cut recovery costs significantly.
 - **Improve Design & Adaptability:** Roads, bridges, airports, and vital utilities are optimized not just for normal use but for continued service during and after disaster conditions.
- An engineer at Tesla Outsourcing Services notes, “[BIM for Infrastructure](#) enables us to model vulnerabilities and test improvements before a single brick is laid. When our models show a bridge or tunnel remains functional in the wake of a disaster, it’s not theory—it’s proven data-driven confidence.”

□ □□□□□□□ □□□□□□□□: □□□□□□□□, □□□□□□□□□□, □□□ □□□□□ □□□□□□□□

□□□□□□□□ □□□□-□□□□□□□□□□

Planning for resilience takes more than technological prowess; it requires a systemic approach. Tesla Outsourcing Services integrates environmental, socio-economic, and community factors into every project via BIM’s capacity to unify data streams across disciplines.

A project manager reflects on this transformation: “By working on a common BIM platform, architects, engineers, planners, and community representatives all see the real-time impact of design decisions. No more information silos—every stakeholder has a voice, and every consideration, from local hazards to community needs, is accounted for.”

□□□□□□□□□□□□□□ □□□ □□□□□□

Modern infrastructure is inherently collaborative. Tesla Outsourcing Services unites public and private stakeholders on a single platform, fostering real-time information exchange and aligning all investments with resilience strategies.

“BIM has turned every project into a shared journey. Whether we’re working with government agencies, utility companies, or local communities, everyone is looking at the same data, solving the same challenges, and celebrating every milestone together,” says the BIM Lead at Tesla Outsourcing Services.

□□□□□□□□□□ □□□ □□□□□ □□ □□□□□□□□□□

In addition to BIM, Tesla Outsourcing Services seamlessly integrates Geographic Information Systems (GIS), Internet of Things (IoT) sensors, and AI-driven analytics. This convergence transforms isolated data points into actionable intelligence — from optimizing transportation routes during emergencies, to predicting maintenance needs and monitoring infrastructure health in real time.

The CEO elaborates: “Technology is not a luxury in resilience planning—it is a necessity. BIM, IoT,

and AI are the engines driving our ability to make informed decisions and adapt instantly as new risks emerge.”

Ensuring Resilient Infrastructure Through Global Standards

Tesla Outsourcing Services ensures all BIM operations adhere to international standards such as ISO 19650, promoting interoperability, data security, and resiliency across borders. This alignment grants infrastructure assets the ability to respond not only to local risks, but to global crises such as pandemics, ensuring the continuity of critical services everywhere.

Overcoming Challenges in BIM Adoption

While the benefits of BIM are clear, the transition is not without challenges. High implementation costs, a shortage of skilled professionals, and resistance to change remain industry hurdles.

Tesla Outsourcing Services meets these head-on by:

- Implementing ongoing, comprehensive training for all staff
- Advocating for policies that support BIM adoption while working closely with public and private partners
- Making quality control and regular audits an integral part of every project

An employee shares, “Our commitment to skill development means we don’t just deliver projects—we build capabilities. Every training session is an investment in the future, empowering teams to leverage the latest tech and stay ahead of industry curves.”

Key Pillars of Successful BIM Implementation

Tesla Outsourcing Services highlights the following pillars as essential to successful BIM implementation for resilient infrastructure:

- Open Collaboration: Encouraging transparent, frequent communication between architects, engineers, and stakeholders at all stages
- Data Sharing: Promoting seamless interoperability to reduce errors, improve efficiency, and reduce project risks
- Standardization: Enforcing consistent protocols for documentation, data handling, and quality assurance
- Documentation: Establishing clear workflows and deliverables to ensure accountability and traceability throughout the project lifecycle

Building a Resilient Future Through BIM

The adoption of BIM for resilient infrastructure is not merely innovative—it’s essential. Tesla Outsourcing Services calls on peers, partners, and policymakers to make resilience the cornerstone of all future infrastructure projects. Through their BIM-led vision and [Staff Augmentation for AEC](#), communities worldwide can look forward to infrastructure that isn’t just built to last, but built to adapt, protect, and empower.

Partnering for Resilient Infrastructure

Tesla Outsourcing Services is a leading global provider of comprehensive engineering and BIM

solutions, specializing in delivering high-quality, cost-effective services to clients across the Architecture, Engineering, and Construction (AEC) industry. With a focus on innovation, precision, and client satisfaction, Tesla Outsourcing Services empowers businesses to achieve their project goals through advanced digital technologies and expert technical support. The company's extensive portfolio includes a wide range of services designed to optimize project workflows, enhance collaboration, and ensure the successful delivery of complex infrastructure and building projects.

For more information about Tesla Outsourcing Services and its BIM-driven approach to resilient infrastructure development, visit www.teslaoutsourcingservices.com/bim-services.php and <https://www.teslaoutsourcingservices.com/bim-for-infrastructure.php>.

Divya Dave

Tesla Outsourcing Services

+1 416-907-9430

[email us here](#)

Visit us on social media:

[LinkedIn](#)

[Bluesky](#)

[Instagram](#)

[Facebook](#)

[YouTube](#)

[Other](#)

This press release can be viewed online at: <https://www.einpresswire.com/article/831168319>

EIN Presswire's priority is source transparency. We do not allow opaque clients, and our editors try to be careful about weeding out false and misleading content. As a user, if you see something we have missed, please do bring it to our attention. Your help is welcome. EIN Presswire, Everyone's Internet News Presswire™, tries to define some of the boundaries that are reasonable in today's world. Please see our Editorial Guidelines for more information.

© 1995-2025 Newsmatics Inc. All Right Reserved.