

Silverts and Brooke Eby Partner to Bring Adaptive Fashion to a New Generation with the B.E. Collection

The B.E. Collection is a bold, style-forward adaptive clothing capsule, designed for dignity, ease, and self-expression

TORONTO, CANADA, July 29, 2025 /EINPresswire.com/ -- Silverts Adaptive Clothing and Footwear has partnered with influencer and disability advocate [Brooke Eby](#) to launch the legacy [B.E. Collection](#), the company's first-of-its-kind adaptive fashion capsule. The collection merges Silverts' decades of expertise with Brooke's lived experience and vibrant style, delivering fashion-forward solutions designed to meet real-world accessibility needs.



Brooke Eby featured in B.E. Collection

This groundbreaking collaboration signals a bold move forward for Silverts, which has long served people with limited mobility and the senior caregiving community. Now, the brand is expanding its reach to a younger, style-conscious generation, blending functional design with inclusive fashion.

“

Living with ALS, I've progressed from self-dressing to fully assisted dressing, and I hope this collection addresses the many-layered needs of those with disabilities.”

Brooke Eby

"Adaptive pieces shouldn't feel dull or medical, and there's a real need in the market to make exciting pieces that work for more body types and stages of disease/disability. This collaboration is a meaningful way to showcase real-world experience and addresses everyday dressing challenges with smart, beautiful solutions, infused with touches of Brooke's personality," expressed Josh Norris, President & CEO at Silverts Adaptive Clothing and Footwear.

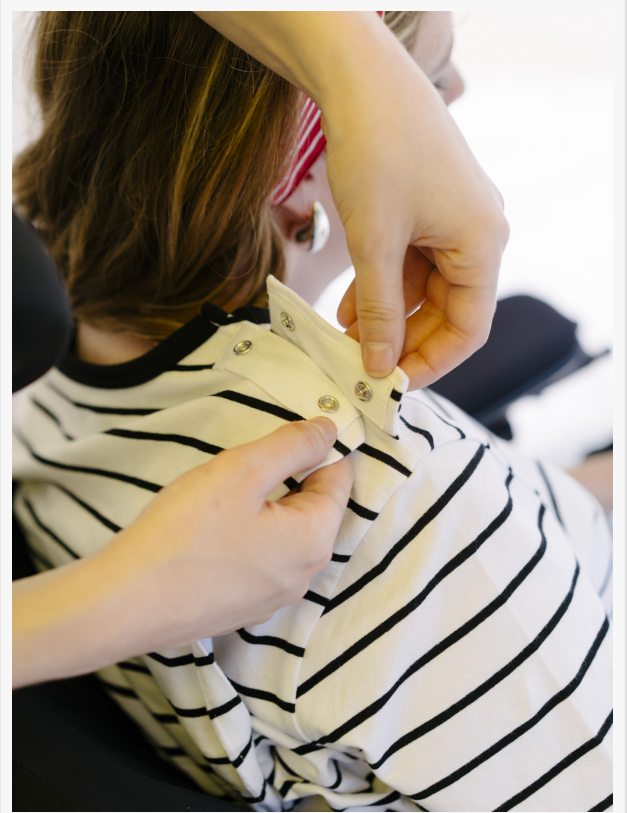
Diagnosed with ALS in 2022, Eby has quickly become a powerful voice in the disability space. "I

can't wait to share this collection with the disability community, no matter what age. Living with ALS, a progressive neurodegenerative disease, I've progressed my way through multiple stages of dressing –from self-dressing to fully assisted dressing, and I hope this collection addresses the many-layered needs of those with disabilities," Eby says.

The B.E. Collection features updated essentials like open-back long-sleeve tops and t-shirt dresses, bib scarves, sherpa shawls, and a terry cloth bath cape in a vintage cherry print. The capsule is designed to support dressing with dignity and ease, without sacrificing style. All pieces are machine washable, dryer-friendly, and available in sizes S–3XL.

A portion of the proceeds from each sale in the B.E. Collection will be donated to [Team Gleason](#), a charity close to Brooke's heart, which supports individuals living with ALS and advocates for meaningful change.

Marnie Nathanson
The Social Status Co.
marnie@thesocialstatusco.com
Visit us on social media:
[Instagram](#)
[TikTok](#)
[Facebook](#)
[LinkedIn](#)



Brooke Eby featured in B.E. Collection

try to be careful about weeding out false and misleading content. As a user, if you see something we have missed, please do bring it to our attention. Your help is welcome. EIN Presswire, Everyone's Internet News Presswire™, tries to define some of the boundaries that are reasonable in today's world. Please see our Editorial Guidelines for more information.

© 1995-2025 Newsmatics Inc. All Right Reserved.