

Tesla Outsourcing Services Pioneers BIM Strategy, Driving Unprecedented ROI for US Construction Sector

Tesla Outsourcing Services drives project value with strategic BIM consulting & implementation, redefining digital construction for maximum efficiency.

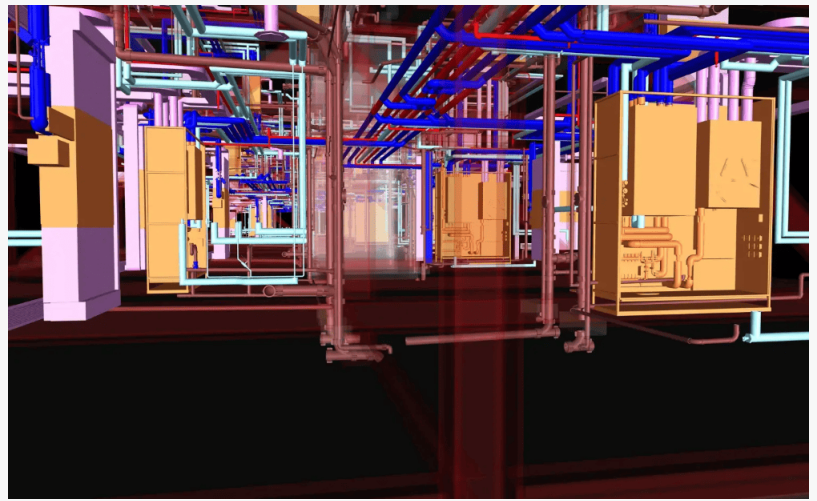
HYATTSVILLE, MD, UNITED STATES, August 13, 2025 /EINPresswire.com/ -- The US construction industry is at a critical inflection point, grappling with persistent challenges of budget overruns, schedule delays, and fragmented communication across project lifecycles. In response, Tesla Outsourcing Services LLP has emerged as a leader in the digital vanguard,

championing a sophisticated and results-driven approach to Building Information Modeling Services. The company is moving the industry conversation from "what is BIM?" to "what is the ROI of our BIM strategy?", offering comprehensive solutions that address the core operational needs of architects, engineers, contractors, and owners.

“

Our mission extends beyond 3D modeling. We are strategic partners in our clients' digital transformation. We provide a clear, strategic path to adoption that minimizes disruption & maximizes ROI.”

Ketan Poojara, CEO



MEP BIM Modeling - MEP Coordination For Historic Building Renovation

□□□□□□□□ □□ □□□□□□□□

True digital transformation begins with strategy, not just software. Tesla Outsourcing Services LLP distinguishes itself through its expert BIM Consulting, which forms the bedrock of its client engagements. The firm recognizes that a one-size-fits-all approach is ineffective. Instead, their team of seasoned consultants, BIM engineers, Architects collaborates closely with clients to develop a bespoke BIM Implementation Plan.

"A successful BIM journey isn't about adopting every new tool; it's about integrating the right tools into a coherent, scalable strategy," says Divya Dave,

Assistant Director at Tesla Outsourcing Services LLP. "We focus on creating a strategic framework that aligns technology directly with our clients' business objectives. This guarantees a smoother transition, fosters widespread user adoption, and positions them for long-term, self-sufficient success."

This process involves a deep-dive analysis of existing workflows, identification of key pain points, and the formulation of a phased adoption roadmap. The plan covers everything from technology stack recommendations and standards creation to comprehensive team training and ongoing support.

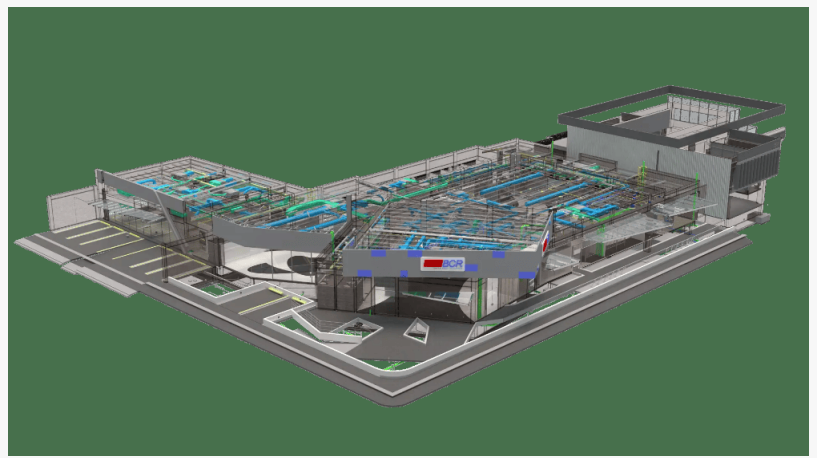
□□□□□□□□ □□ □□ □□□□ □□□□ □□□□
□□□□□□□□ □□□□ □□ □□□

For projects involving existing structures, accuracy is non-negotiable. Tesla Outsourcing Services LLP's advanced Scan to BIM services provide an unparalleled level of precision by expertly converting point cloud data into intelligent BIM models. The

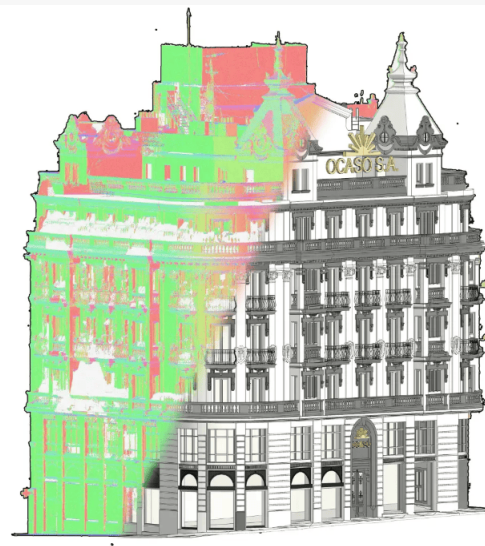
company specializes in translating the raw data from state-of-the-art technologies like high-definition laser scanning into functional, data-rich digital assets. This critical service effectively bridges the gap between the physical as-built conditions and the digital design environment.

"Scan to BIM is fundamentally about risk mitigation," notes Prex Poojara, Vice President of BIM Operations. "By taking the point cloud data and creating a millimeter-accurate digital twin, we eliminate the guesswork that leads to costly on-site clashes and rework. For our clients, this means more predictable timelines and budgets, especially in complex renovation and retrofit projects."

This conversion process results in an intelligent, data-rich 3D BIM model. The applications are vast and critical for modern construction, from ensuring historic preservation projects respect the original structure to providing facility managers with a precise as-built model for ongoing maintenance.



Architectural BIM Modeling For Mixed Use Commercial And Library Building

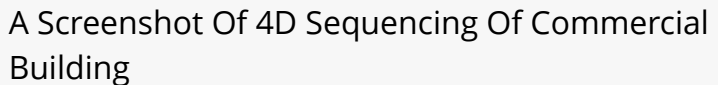


Architectural Scan To BIM For Heritage Restaurant

With a proven portfolio of successfully delivered projects, Tesla Outsourcing Services LLP continues to deepen its engagement within key US markets. The company provides [specialized BIM services in Florida](#), supporting the state's rapid residential and commercial development with agile and scalable modeling teams. In the Northeast, their [expert BIM services in Boston](#) cater to a complex market that blends cutting-edge new construction with the sensitive renovation of historic buildings. Furthermore, the firm delivers [comprehensive BIM services in Texas](#), providing the robust digital infrastructure required for the state's large-scale industrial and public infrastructure projects. This localized focus, backed by a global delivery model, ensures that every project benefits from both regional insight and world-class technical expertise.

☐ ☐ ☐ ☐ ☐ ☐ ☐ ☐ ☐ ☐ ☐ ☐ ☐ ☐ ☐ ☐ ☐ ☐ ☐ ☐ ☐ ☐ ☐ ☐ ☐ ☐ ☐ ☐ ☐ ☐ ☐ ☐

Tesla Outsourcing Services LLP is an industry-leading engineering and BIM Services provider with a global footprint and over 17 years of dedicated experience. The company empowers AEC firms by delivering high-quality, cost-effective, and technology-driven solutions in BIM, MEP, Structure and Architecture services. Serving a diverse clientele across the USA, Canada, UK, Europe, and Australia, their unwavering commitment to quality, innovation, and client partnership has made them one of the most trusted names in the AEC outsourcing industry. Visit our official website -



<https://www.teslaoutsourcingservices.com>

□□□□ □□□□ □□□□ □□ □□□□

□□ Architectural BIM Modeling for Glenfern - <https://www.teslaoutsourcingservices.com/case-study/architectural-bim-modeling-of-residential-building.php>

□□ Revit Modeling and Construction Drawings for India Bazar - <https://www.teslaoutsourcingservices.com/case-study/revit-construction-documentation-for-commercial-building.php>

Divya Dave

Tesla Outsourcing Services

+1 416-907-9430

[email us here](#)

Visit us on social media:

[LinkedIn](#)

[Bluesky](#)

[Instagram](#)

[Facebook](#)

[YouTube](#)

[X](#)

[Other](#)

This press release can be viewed online at: <https://www.einpresswire.com/article/839393217>

EIN Presswire's priority is source transparency. We do not allow opaque clients, and our editors try to be careful about weeding out false and misleading content. As a user, if you see something we have missed, please do bring it to our attention. Your help is welcome. EIN Presswire, Everyone's Internet News Presswire™, tries to define some of the boundaries that are reasonable in today's world. Please see our Editorial Guidelines for more information.

© 1995-2025 Newsmatics Inc. All Right Reserved.