

Global Leader Tesla Outsourcing Services LLP Drives AEC Innovation with Cutting-Edge BIM Solutions

A Comprehensive Look at the Future of Project Delivery and Asset Management through Advanced Digital Solutions

NEW YORK, NY, UNITED STATES, August 21, 2025 /EINPresswire.com/ -- The global Architecture, Engineering, and Construction (AEC) industry is rapidly evolving, driven by the need for greater efficiency and improved project outcomes. Tesla Outsourcing Services LLP is leading this change, pioneering digital solutions that are reshaping how buildings are designed and managed. The firm continues to strengthen its role as a key partner for navigating modern construction by integrating digital twinning with its core Building Information Modeling (BIM) workflow.



BIM for Bridge

“

The future of the AEC industry is not merely about constructing buildings; it's about creating intelligent, dynamic assets that can be optimized and managed throughout their entire lifespan”

Ketan Poojara, CEO of Tesla Outsourcing Services LLP

"The future of the AEC industry is not merely about constructing buildings; it's about creating intelligent, dynamic assets that can be optimized and managed throughout their entire lifespan," said Ketan Poojara, CEO of Tesla Outsourcing Services LLP. "For too long, the industry has operated in silos, with data fragmented and disconnected. Our commitment to digital twinning and an integrated BIM workflow is the key to unlocking true value for our clients. It's about empowering them with the insights to make data-driven decisions from the first sketch to the final demolition, ensuring that every structure is not only built to last but is also built to perform."

The AEC sector faces numerous challenges, primarily due to fragmented data and a lack of a

single source of truth. To address this, Tesla Outsourcing Services LLP provides digital solutions that leverage the full potential of BIM.

□□ BIM focuses on design and construction, providing a digital representation of a project.

□□ A dynamic digital twin, however, extends this intelligence into operational and maintenance phases by integrating real-time data from the physical asset.

□□ This capability transforms a building into an adaptable, intelligent system, allowing owners to monitor performance, simulate scenarios, and optimize a building's efficiency.

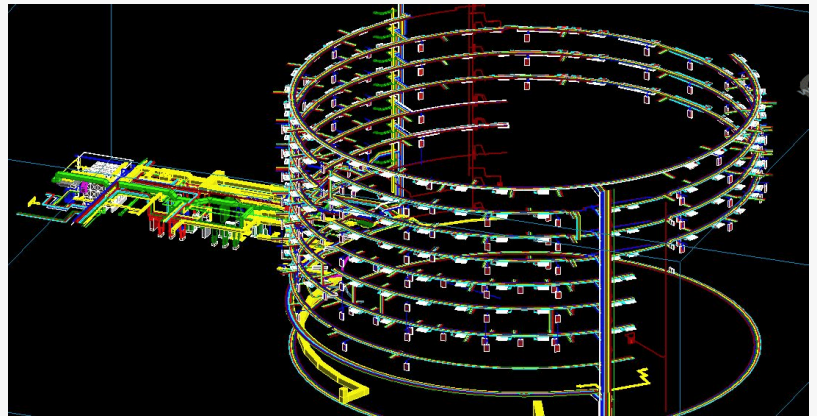
□□□ □□□□□□□□□□□□ □□□□ □□
□□□□□□□□□□□□ □□□ □□□□□□□□

Tesla Outsourcing Services LLP builds its expertise on comprehensive [BIM Services](#), which form the foundation for digital twins. Our team develops detailed, data-rich 3D models and emphasizes a collaborative approach to eliminate data silos and streamline project delivery. This ensures the quality of the BIM model directly impacts the fidelity of the digital twin. A core offering is our proficiency in [Scan to BIM Services](#). This specialized service creates precise BIM models from laser scans, which is invaluable for renovations and retrofits. The process accelerates the design phase and ensures new work is coordinated with existing conditions, mitigating costly conflicts.

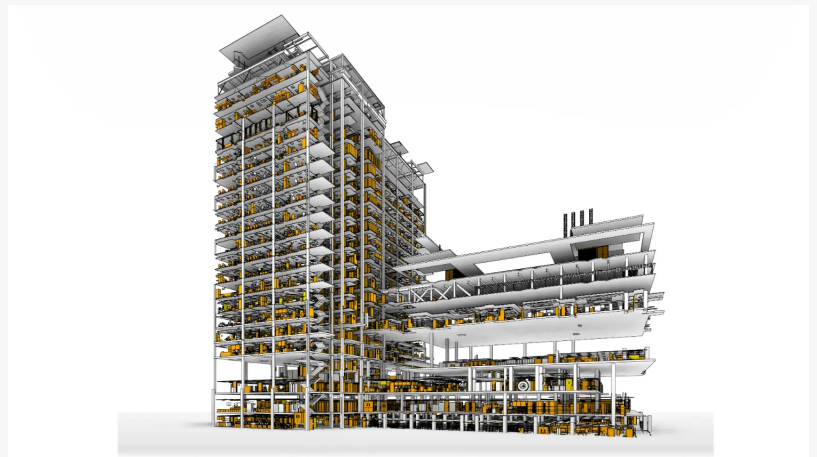
We believe every building has a story to tell, and our role is to translate that story into data that enables smarter decisions," stated □□□□□□□□ □□□□□□, □□□□□□ □□□□□□□□□□□□ □□□□□□□□ □□ □□□□□□ □□□□□□□□□□□□ □□□□□□□□ □□□□. "The fusion of BIM and digital twinning is more than a technological advancement; it's a strategic business advantage. It allows our clients to shift from reactive management to proactive intelligence.



BIM for Roads

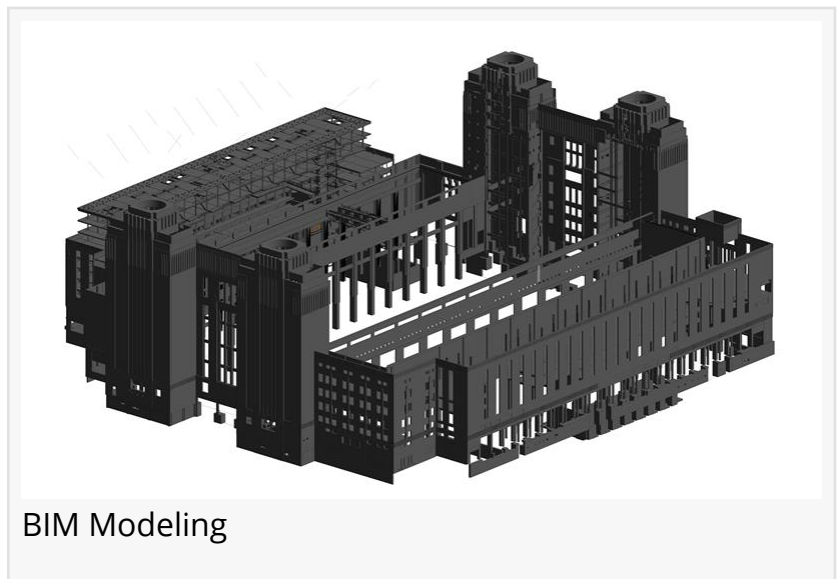


BIM in MEPF Design



Scan to BIM Model

Our robust BIM Coordination Services are a critical part of our integrated approach. This service ensures that all models from different disciplines—architectural, structural, and MEP—are integrated into one clash-free master model. We meticulously identify and resolve spatial conflicts before construction, a key benefit of BIM. This pre-emptive approach helps clients avoid costly rework, schedule delays, and disputes. Our expert coordinators use advanced software and a disciplined process to harmonize all models, making construction more predictable.



Partnering with Tesla Outsourcing Services LLP provides benefits that go beyond project delivery. By outsourcing these services, AEC firms can focus on their core strengths like design and project management. We provide access to a global talent pool without the overhead of an in-house team. Our scalable model allows firms to adjust their capacity as needed, adapting to market fluctuations. This is a cost-effective way to access technology and expertise that would be expensive to maintain internally. Our commitment to quality and timely delivery ensures clients receive high-caliber work that meets international standards.

Tesla Outsourcing Services LLP is a leading provider of digital solutions for the Architecture, Engineering, and Construction (AEC) industry. With a team of highly skilled professionals and a commitment to innovation, the company specializes in leveraging advanced technologies such as Building Information Modeling (BIM) to deliver superior project outcomes. Tesla Outsourcing Services LLP is dedicated to helping clients enhance efficiency, reduce costs, and improve collaboration throughout the entire project lifecycle. The firm's comprehensive suite of services, including Scan to BIM, BIM Coordination, Clash Detection, and full-stack BIM support, empowers clients to navigate the complexities of modern construction and asset management with confidence.

Divya Dave
Tesla Outsourcing Services
+1 416-907-9430
[email us here](#)
Visit us on social media:
[LinkedIn](#)

Bluesky
Instagram
Facebook
YouTube

This press release can be viewed online at: <https://www.einpresswire.com/article/841835838>

EIN Presswire's priority is source transparency. We do not allow opaque clients, and our editors try to be careful about weeding out false and misleading content. As a user, if you see something we have missed, please do bring it to our attention. Your help is welcome. EIN Presswire, Everyone's Internet News Presswire™, tries to define some of the boundaries that are reasonable in today's world. Please see our Editorial Guidelines for more information.

© 1995-2025 Newsmatics Inc. All Right Reserved.