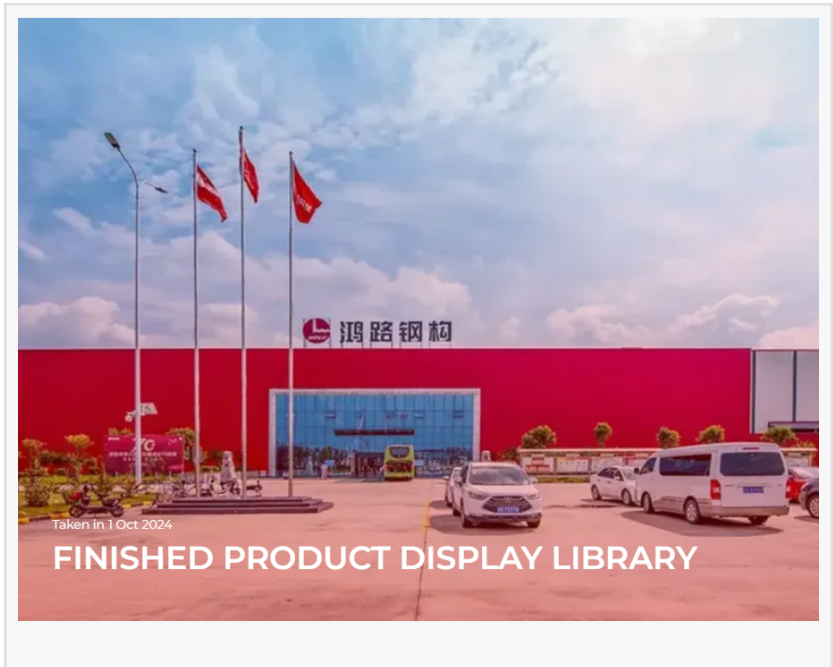


Holusteel Structure: Leading Steel Structure Buildings Manufacturer at STEEL BUILD 2025

HEFEI, ANHUI, CHINA, August 27, 2025

/EINPresswire.com/ -- As the global construction landscape continues to evolve, the steel structure industry stands at a pivotal moment. With sustainability, technological innovation, and efficiency at the forefront, the industry is poised for significant growth and transformation. At the heart of this change is STEEL BUILD 2025, a premier international exhibition that brings together the brightest minds and most innovative companies shaping the future of metal construction. This year, the event offers a unique platform to explore groundbreaking trends and connect with industry leaders, and one of the most anticipated exhibitors is [Holusteel Structure](#), a company dedicated to delivering excellence and building lasting partnerships.



The Epicenter of Innovation: STEEL BUILD 2025

Taking place from May 8-10, 2025, at the Poly World Trade Center Expo in Guangzhou, China, STEEL BUILD 2025 is set to be a landmark event. Spanning an impressive 50,000 square meters, the exhibition will host over 800 exhibitors and welcome an estimated 100,000 visitors from nearly 100 countries and regions. It is a vital hub for both international brands seeking to enter the Chinese market and global buyers looking for a one-stop purchasing solution.

The event's theme, "Intelligent Construction, Steel Leads the Future," underscores the industry's shift towards smarter, more sustainable practices. Attendees can expect to see a comprehensive display of the latest technologies and solutions across the entire industrial chain. This includes everything from [steel structure buildings](#) and prefabricated systems to intelligent construction and green building materials. The exhibition will feature themed areas for different industry sectors, providing a clear and focused view of the newest advancements.

Beyond the main exhibition hall, STEEL BUILD 2025 will also host a series of forums and technical

seminars. These sessions will bring together experts to discuss critical topics, including the implementation of green steel technologies, the integration of AI and robotics in manufacturing, and the development of resilient infrastructure to withstand extreme climate conditions. For any professional in the steel or construction industry, this event is a non-negotiable opportunity to gain insights, forge new connections, and witness the future of building materials firsthand.

Holusteel Structure: Building Success, One Project at a Time

Amidst the energy and innovation of STEEL BUILD 2025, Holusteel Structure stands out as a leading manufacturer and a trusted partner in the industry. The company's presence at the event is a testament to its commitment to excellence and its forward-thinking approach.

Holusteel Structure isn't just a supplier; it's a partner in its clients' success, an ethos that has built its reputation on a foundation of trust, transparency, and open communication.

Core Strengths and Advantages

Holusteel Structure differentiates itself through a relentless pursuit of improvement and a customer-centric philosophy. The company understands that each project is unique, with its own set of challenges and requirements. This is why it goes the extra mile to understand and meet the specific needs of every client, fostering long-term relationships instead of just closing a sale.

A key advantage for Holusteel is its continuous focus on staying abreast of the latest industry advancements and trends. In an industry rapidly adopting new technologies, this proactive approach allows Holusteel to deliver innovative solutions that not only meet but exceed client expectations. The company is poised to lead in key industry trends for 2025 and beyond, including:

Sustainability and Green Building: The demand for eco-friendly construction is rising, and Holusteel Structure is responding with solutions that prioritize sustainability. The company leverages the inherent recyclability of steel and designs energy-efficient structures, aligning with global efforts to reduce carbon footprints.

Technological Integration: Holusteel embraces advanced manufacturing technologies such as automation and digital design to enhance efficiency and precision. By utilizing cutting-edge software and automated processes, the company minimizes waste and streamlines production, delivering higher quality products in less time.

Resilience and Durability: As climate change brings more frequent and severe weather, the need for resilient infrastructure is paramount. Holusteel specializes in creating structures that are not only strong but also resistant to seismic activity, high winds, and corrosion, ensuring long-term safety and durability for its clients' investments.

Product Applications and Notable Projects

Holusteel Structure's expertise spans a wide range of applications, showcasing its versatility and capability to handle diverse projects. Its primary products, including prefabricated steel

buildings, steel frames, and custom-engineered structural components, are used in an array of scenarios.

For example, Holusteel's solutions are the backbone of modern industrial facilities, providing the expansive, column-free spaces required for factories, warehouses, and distribution centers. The company also plays a crucial role in the commercial sector, designing and manufacturing steel frames for office buildings, shopping malls, and exhibition centers that are both aesthetically pleasing and structurally sound.

In the infrastructure and public works domain, Holusteel's components are vital for the construction of bridges, airports, and sports stadiums, where strength and precision are non-negotiable. Furthermore, its lightweight steel solutions are increasingly being adopted in the residential sector, offering a quicker, more efficient, and fire-resistant alternative to traditional building methods.

The company's dedication to quality is evident in its portfolio of successful projects. While specific client names may be confidential, Holusteel has provided steel structures for numerous large-scale developments, from sprawling industrial parks that facilitate global logistics to high-rise commercial buildings that are changing city skylines. Each project serves as a testament to Holusteel's ability to turn complex architectural visions into tangible realities.

As Holusteel Structure showcases its capabilities at STEEL BUILD 2025, it reinforces its position as a dependable and respected partner in the steel structure industry. With a steadfast commitment to client success and a keen eye on future trends, the company is not just keeping pace with the industry—it's helping to shape it.

To learn more about Holusteel Structure and its innovative solutions, visit their official website at: <https://www.holusteelstructure.com/>.

HONGLU STEEL CONSTRUCTION GROUP
HONGLU STEEL CONSTRUCTION GROUP
136 0560 7138
sales@holusteelstructure.com

This press release can be viewed online at: <https://www.einpresswire.com/article/843498402>

EIN Presswire's priority is source transparency. We do not allow opaque clients, and our editors try to be careful about weeding out false and misleading content. As a user, if you see something we have missed, please do bring it to our attention. Your help is welcome. EIN Presswire, Everyone's Internet News Presswire™, tries to define some of the boundaries that are reasonable in today's world. Please see our Editorial Guidelines for more information.

© 1995-2025 Newsmatics Inc. All Right Reserved.