

# AEC Industry Adopts Building Information Modeling (BIM) to Mitigate Financial Risk and Ensure Project Success

*How expert digital vetting of construction projects reduces financial exposure for developers and contractors*

WY, UNITED STATES, August 29, 2025 /EINPresswire.com/ -- In an era where construction project budgets are under unprecedented pressure from volatile material costs and thin profit margins, the greatest threats to financial success are often hidden within the complexity of design documents. A single unforeseen clash between a

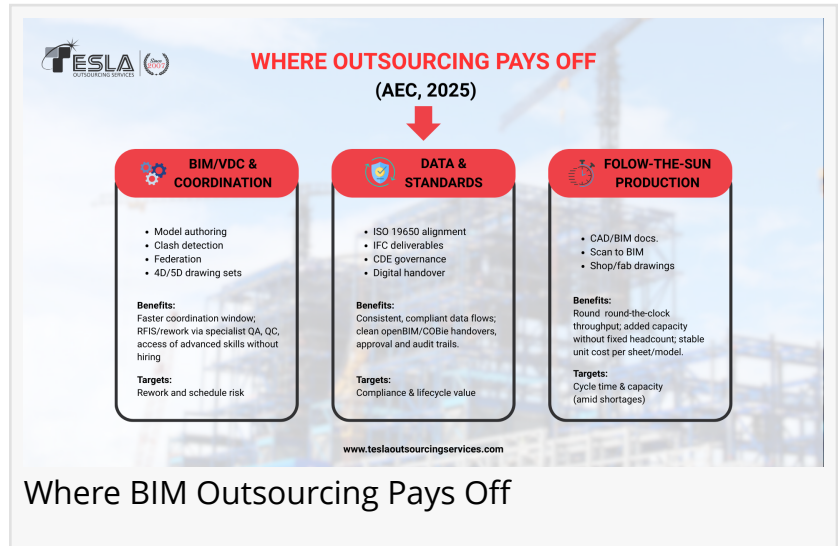
structural beam and a critical HVAC duct can trigger a cascade of costly change orders, schedule delays, and legal disputes. To combat this, savvy developers and contractors are increasingly looking beyond traditional project management and embracing a powerful form of digital risk

mitigation: expert, Building Information Modeling. Tesla Outsourcing Services LLP, a global specialist in digital engineering, is demonstrating how this strategic partnership is creating a new standard of predictability and financial security in the construction lifecycle.

“We use data to de-risk development. BIM allows us to build a project digitally, solving costly problems on a screen, not on-site with a checkbook”

*Ketan Poojara, CEO of Tesla Outsourcing Services LLP*

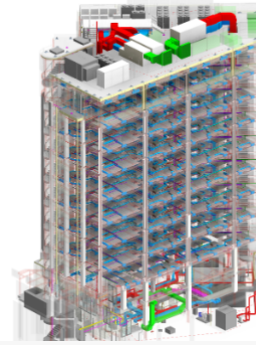
developed in silos. The true test of their integration doesn't occur until construction is underway, where discovering a conflict means expensive on-site rework, material waste, and damaging delays. This is where the practice of [BIM building information management](#) becomes a critical tool for financial control. By creating a federated digital model that combines all disciplines, a specialized [BIM Service Provider](#) can run comprehensive clash detection analyses, effectively



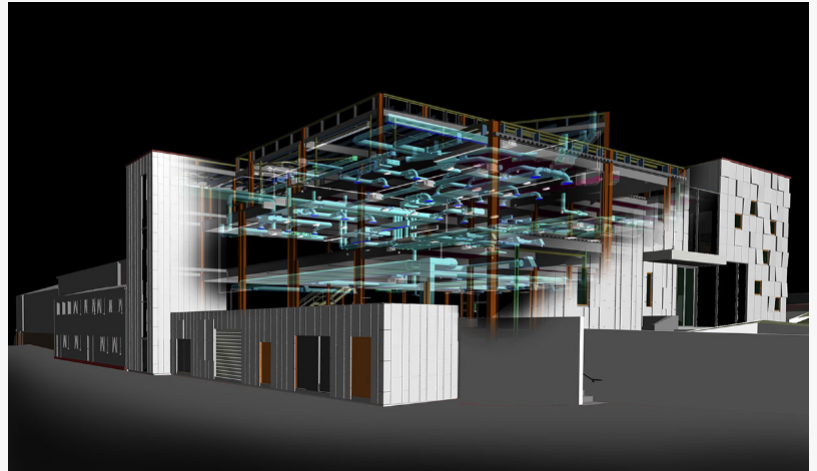
conducting a "digital construction" of the entire project. This process reveals not just hard clashes (e.g., a pipe running through a column) but also soft clashes (e.g., insufficient clearance for maintenance access) and workflow conflicts that would otherwise emerge as costly surprises.

“We recently worked on a large-scale data center project, where the density of MEP systems is astronomical,” explains Prex Poojara, V.P. of Tesla Outsourcing Services. “The initial designs looked fine on 2D drawings, but our federated model immediately flagged thousands of critical issues. We identified major conflicts between the massive cable trays for the servers and the primary chilled water piping for the cooling systems. Resolving this in the pre-construction phase saved the client an estimated eight figures in potential rework and, more importantly, prevented a delay that would have had severe contractual penalties. That is the tangible financial impact of meticulous digital vetting.”

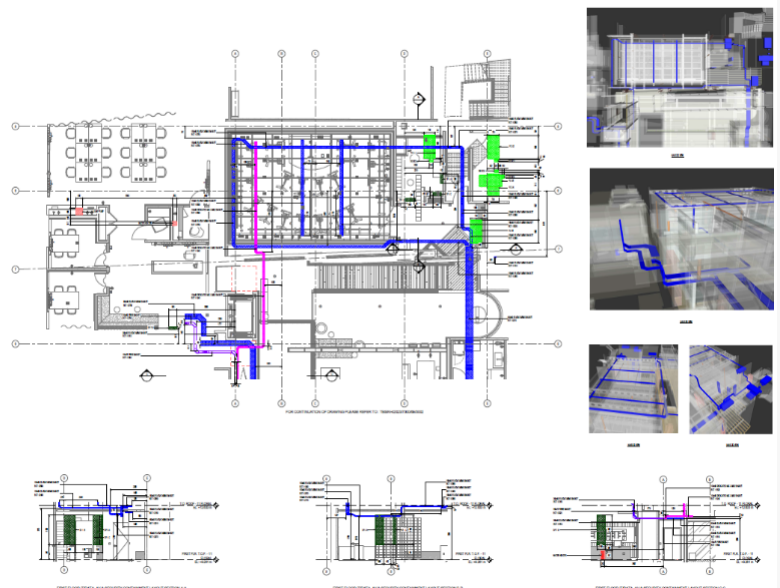
This proactive approach to problem-solving benefits the entire project ecosystem. A well-coordinated, [clash-free BIM model](#) ensures accurate quantity take-offs and precise cost estimates. This precision boosts owners' confidence in their budgets. It provides contractors with clear, coordinated shop drawings, which reduces RFIs. Construction crews can then install systems correctly the first time. This level of documentation and predictability can also impact a project's insurability and



Coordinated Structural MEP BIM Model of Residential Tower



MEP BIM Model



Coordinated MEP Drawing and 3D BIM Views

financing. Proposals with thoroughly vetted BIM models demonstrate lower risk, which appeals to lenders and insurance underwriters.

Consider a real-world example: A real estate investment trust was planning a 40-story residential tower. Any delay on this scale would significantly impact their ROI. They enlisted Tesla

Outsourcing Services for Building Information Modeling Services as a risk mitigation strategy. The team developed an integrated model and discovered a major design flaw: main plumbing risers conflicted with structural slabs. Fixing this on-site would mean re-engineering, re-fabrication, and a three-month delay. By solving it digitally, the project stayed on track, preserving investor expectations and ensuring timely, on-budget completion.



□□□□□□□□ □ □□□□□□□ □□ □□□□□□□□□□□□□□ □□□ □□□□□□□□□□□□□□

“The ultimate goal is to remove ambiguity from the construction process,” adds Bhagwati Pathak, COO of Tesla Outsourcing Services. “A detailed, data-rich BIM model serves as the definitive project contract, understood by all parties. It reduces the friction and disputes that often arise from interpreting separate sets of 2D drawings. This collaborative, transparent environment is not just better for building; it’s better for business.” As the AEC industry continues to face economic headwinds, the ability to guarantee cost and schedule certainty will be the defining characteristic of successful projects. Strategic outsourcing of BIM is emerging as one of the most effective tools available to achieve that goal, shifting the focus from reactive problem-solving to proactive risk elimination. To experience the benefits of expert BIM outsourcing for your next project, contact Tesla Outsourcing Services LLP today -

<https://www.teslaoutsourcingservices.com/contact-us.php>

□□□□□□ □□□□□□ □□□□□□□□□□□□ □□□□□□□□ □□□

Founded in 2007, Tesla Outsourcing Services LLP is a leading global provider of BIM, Scan to BIM, and engineering solutions for the Architecture, Engineering, and Construction (AEC) industry. With a team of over 350 skilled professionals and a portfolio of more than 5,000 completed projects across 25 countries, the company is committed to delivering accuracy, efficiency, and value. Adhering to international standards like ISO 19650, Tesla Outsourcing Services LLP empowers clients to enhance collaboration, minimize risk, and achieve project excellence through cutting-edge digital construction technologies. Visit Official Website of Tesla Outsourcing Services LLP - <https://www.teslaoutsourcingservices.com>

Divya Dave

Tesla Outsourcing Services

+1 416-907-9430

[email us here](#)

Visit us on social media:

[LinkedIn](#)

[Bluesky](#)

[Instagram](#)

[Facebook](#)

[YouTube](#)

[X](#)

[Other](#)

---

This press release can be viewed online at: <https://www.einpresswire.com/article/844178197>

EIN Presswire's priority is source transparency. We do not allow opaque clients, and our editors try to be careful about weeding out false and misleading content. As a user, if you see something we have missed, please do bring it to our attention. Your help is welcome. EIN Presswire, Everyone's Internet News Presswire™, tries to define some of the boundaries that are reasonable in today's world. Please see our Editorial Guidelines for more information.

© 1995-2025 Newsmatics Inc. All Right Reserved.