

Hybrid AI: Experto AI's Methodology for Lightweight, Secure, and Powerful On-Premise AI

Experto AI explains their hybrid AI integration approach to secure fast, powerful, reliable, secure, on-premise AI enterprise/government solutions

SAN JOSE, CA, UNITED STATES,
September 9, 2025 /EINPresswire.com/
-- There is an undeniable attraction to the power of AI, and the potential is palpable. Yet we are still in the relatively early stages of understanding how it can be incorporated into our lives and businesses.

[Experto AI](#) has sought to distinguish its approach in order to properly classify the problems and solutions. The starting premise is that AI companies can be divided into two broad categories: AI Producers, and Solution Architects.



Perfect Synergy and Differing Strengths, Optimal Results

We are solution architects: we identify the problem and build tools and solutions for it. In that way, we do not face the problem with users where they do not know how to integrate AI into their system, the pain and gain analysis is foundational to the design of our AI tools.

AI is an engine, but AI solutions incorporate that engine into a machine with a purpose. Thinking in this machine allegory, we have thought extensively about how to structure the solutions to incorporate the best parts for longevity, security, and power.

Experto AI utilizes their HAPS framework to assess the four main points of improvement in terms of AI systems: (1) the Human in the loop, (2) the AI models including raw power and data quality, (3) the Prompting, and (4) the Structure and architecture of the system.

The H in HAPS refers to the humans in the AI system which include prompters, recipients, evaluators, and decision makers. Improving this part of the system can be long term and costly, requiring training and success metrics.

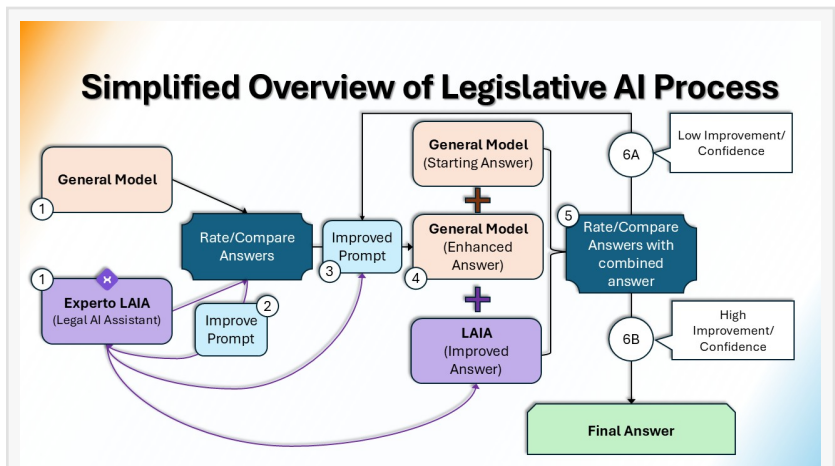
The A in HAPS refers to the AI model itself. This can be thought of in terms of raw horsepower. The AI can handle more simultaneous tasks, it can be trained on cleaner and better data... But all of this is merely enhancing one part of the system. Many companies fall into this trap of maximizing their AI power without addressing the other bottlenecks such as the integration into the working person's day or the quality of communication between the AI and the prompter.

This leads to the P in HAPS which refers to the prompting methodology. Here many aspects of "weaker" AI can be fully compensated for with skill and research. This is a relationship between the Humans and the AI wherein they speak in languages and fill in gaps in a way that they both understand.

The S in HAPS is the main point of the article which is the system structure itself. The structure of the system plays a crucial role in the performance and cost of the entire solution. One of the primary ways to implement an immediate high-impact solution into an enterprise level solution with substantial improvement is through implementing the Hybrid AI Approach.

The Hybrid AI Approach:

This approach stems from the simple premise of "using the right tool for the job". Solutions usually involve a combination of traditional programming logic, mixed with natural language processing (NLP) and some advanced and implicit analysis. The promise and dream of generative AI is that it can seamlessly provide these solutions in the way that an assistant would clearly understand what you mean and the context of the request and combine that with the computing power of modern hardware.



Experto AI's Methodology Implementing Hybrid AI Into Legislative Processes



Nawar Kamel, CEO of Experto AI Inc

Thinking of all these benefits in terms of the AI itself (The A in HAPS) is a brute-force approach to the problem. Much higher level quality results can be achieved through implementing a selective AI integration process we refer to as the Hybrid AI Approach.

General AI and Domain Specific AI have different strengths that can sometimes be exclusive of each other; while general AI is able to analyze language in a broad range of contexts, domain specific AI can be extremely limited and narrow in that sense by design. A simple example is looking at two domain specific AI: the first is a legal employment law AI and the second is a chemistry AI. They would read the word unionized completely differently (The first as being part of a union, and the second seeing that it is referring to something that is not ionized).

This is a benefit not a curse. Utilizing different AI at different stages of the entire structure means you can have a council of AI experts weighing in where they are best suited, and also have a general AI for contextualizing problems and acting as intermediary with the human in the loop. Together they can improve each others prompts, results, understanding, and lead to far greater results with far fewer resources.

This is how we were able to maintain top quality legal AI solutions available on-premise offline for maximal security and performance; precisely because it is a specific tool with specific knowledge situated within a specific system architecture and structure. This combination assures modularity and an appropriate focus on the different elements of the solution as a whole.

The hybrid AI approach is the future of AI. It is utilizing the correct small lightweight AI exactly where it is needed and relaying its answer within a broader system context for a specific purpose as a solution to a real problem. It is not merely a race to the most domains or the fastest raw processing of gigantic datasets. That has its place, but your problem may already be solvable today with the appropriate hybrid AI structure.

Nawar Kamel
Experto AI Inc.
+1 302-266-1106
[email us here](#)

This press release can be viewed online at: <https://www.einpresswire.com/article/844861793>

EIN Presswire's priority is source transparency. We do not allow opaque clients, and our editors try to be careful about weeding out false and misleading content. As a user, if you see something we have missed, please do bring it to our attention. Your help is welcome. EIN Presswire, Everyone's Internet News Presswire™, tries to define some of the boundaries that are reasonable in today's world. Please see our Editorial Guidelines for more information.

© 1995-2025 Newsmatics Inc. All Right Reserved.