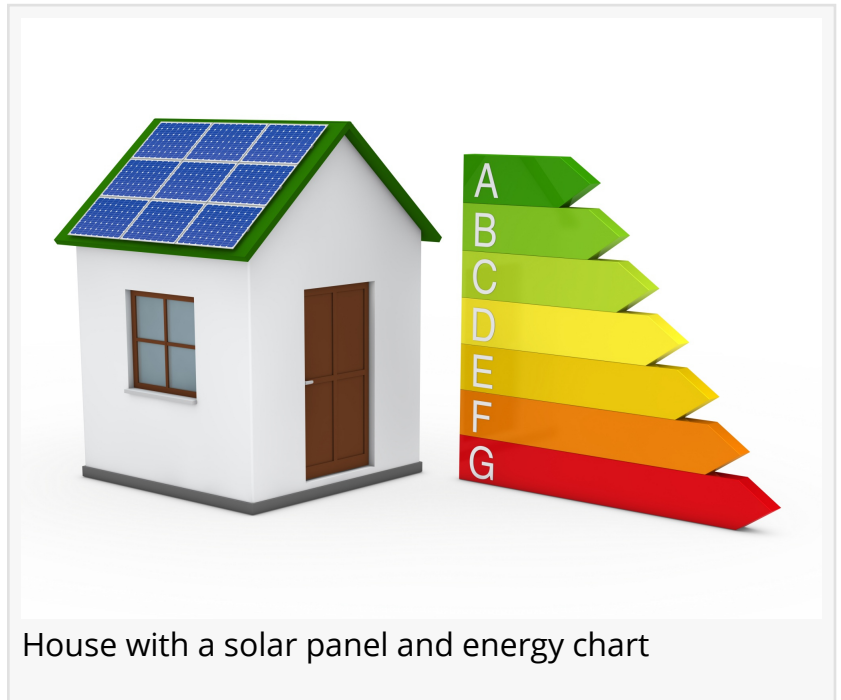


ADIGE Radiators Urges Households to Prepare for Winter with Energy-Efficient Heating Upgrades

Discover how strategic heating upgrades, including efficient towel radiators, can slash your energy bills during the cold months.

LONDON, UNITED KINGDOM,
September 12, 2025 /

EINPresswire.com/ -- As the autumn chill begins to set in and the clocks go back, UK households are being urged to think strategically about their heating to combat the impending winter cold without facing astronomical energy bills. ADIGE Radiators, a leading supplier of premium heating solutions, is highlighting the critical window of opportunity for homeowners to upgrade their heating systems for maximum efficiency and comfort.



Vinnie Ozer, Operations Manager at ADIGE Radiators, emphasises that proactive planning is key. "Many people wait until the first frost to think about their heating, often resorting to simply cranking the thermostat up when the time comes," says Ozer. "This is the most direct route to high energy consumption. A considered approach now, focusing on smart upgrades like modern radiators and towel rails, can dramatically improve a home's warmth and energy efficiency, leading to significant savings throughout the winter."

With energy prices remaining volatile, the company is sharing expert advice on how Britons can keep their homes cosy and their costs down.

Beyond the Thermostat: Intelligent Heating for a Warmer Home

Simply turning the heating off and on is an outdated and costly approach. Modern heating is about intelligent control and efficient heat emission. ADIGE Radiators points to three core areas

for improvement:

1. The Power of the Programmer: A programmable thermostat is your first line of defence. Setting your heating to come on only when you need it – lowering the temperature when you're asleep or out of the house – prevents wasted energy. "Heating an empty home is like throwing money out of the window you probably also need to draught-proof," Ozer notes wryly.

2. The Efficiency of Modern Radiators: Older, panel-style radiators can be incredibly inefficient. Modern column radiators and designer models are engineered not just for style but for performance. They are designed to hold more water and possess a larger surface area, meaning they can heat a room more effectively at a lower flow temperature from your boiler. This allows your boiler to run more efficiently, directly cutting gas consumption.

3. Bleeding and Balancing: A simple yet often overlooked task is bleeding radiators. Trapped air prevents hot water from filling the entire radiator, making it work harder to produce less heat. Ensuring your system is balanced by a qualified engineer also guarantees an even distribution of heat throughout your property.

The Unsung Hero of Bathroom Heating: [The Towel Radiator](#)

A frequently underestimated source of heat loss and inefficiency is the bathroom. Many homes rely on a single, often inadequate, heated towel rail for both drying towels and heating what can be a cold, tiled space.

ADIGE

RADIATORS

ADIGE Radiators



SLIZZA Designer Towel Radiator

"An outdated or poorly sized towel radiator can be a real energy drain," explains Vinnie Ozer. "It might be running for hours on end, struggling to take the chill off the room. Upgrading to a model that is correctly sized for your space and needs is a game-changer. It provides luxurious, warm towels, eliminates damp, and heats the room effectively, often meaning you don't need to rely on additional, more expensive heating sources like electric fan heaters."

ADIGE Radiators specialises in a wide range of towel radiators to suit every home, emphasising that correct sizing is crucial for efficiency:

- The 800mm Wide Towel Radiator: This is a superb choice for larger family bathrooms or spacious en-suites. Its generous size provides ample heating power and plenty of rail space for multiple towels. It becomes a statement centrepiece while performing a vital heating role efficiently.
- The 400mm Towel Rails: Perfect for smaller cloakrooms, shower rooms, or as a supplementary heater in a larger bathroom. Its compact footprint saves on space without sacrificing performance, ensuring even the smallest room can be effectively heated.
- [Narrow Towel Radiator](#): For those really tight spaces, such as in galley bathrooms or between fitted units, narrow towel rails are the ideal solution. They offer the dual function of heating and towel drying where a wider model simply wouldn't fit, ensuring no home must go without efficient bathroom heating.

A Final Word on Winter Preparedness

ADIGE Radiators recommends a holistic approach. Alongside upgrading heating hardware, simple steps like draught-proofing windows and doors, insulating lofts, and even closing curtains at dusk can make a tangible difference.

"Your home's heating system should work with you, not against your wallet," concludes Vinnie Ozer. "Investing in the right radiators and towel rails now is an investment in your winter comfort and your financial peace of mind. We're here to help homeowners navigate these choices and find the perfect, efficient heating solutions for their specific needs."

For more information on ADIGE Radiators' range of energy-efficient heating products, including their extensive collection of [designer towel radiators](#), or for further advice on preparing your home for winter, visit their website.

About ADIGE Radiators:

ADIGE Radiators is a UK-based supplier of high-quality heating solutions, from traditional column radiators to contemporary designer models and an extensive range of towel radiators. Committed to combining Italian design excellence with British engineering standards, ADIGE provides homeowners and trade professionals with efficient, stylish, and reliable products to create warm and inviting homes.

Vinnie Ozer

ADIGE Radiators
+44 20 8892 0932
[email us here](#)

This press release can be viewed online at: <https://www.einpresswire.com/article/848105823>

EIN Presswire's priority is source transparency. We do not allow opaque clients, and our editors try to be careful about weeding out false and misleading content. As a user, if you see something we have missed, please do bring it to our attention. Your help is welcome. EIN Presswire, Everyone's Internet News Presswire™, tries to define some of the boundaries that are reasonable in today's world. Please see our Editorial Guidelines for more information.

© 1995-2025 Newsmatics Inc. All Right Reserved.