

Colle AI Launches Adaptive Routing Tools to Simplify Multichain Development

New intelligent routing framework reduces technical barriers and improves efficiency for NFT deployment across blockchain networks

LONDON, LONDON, UNITED

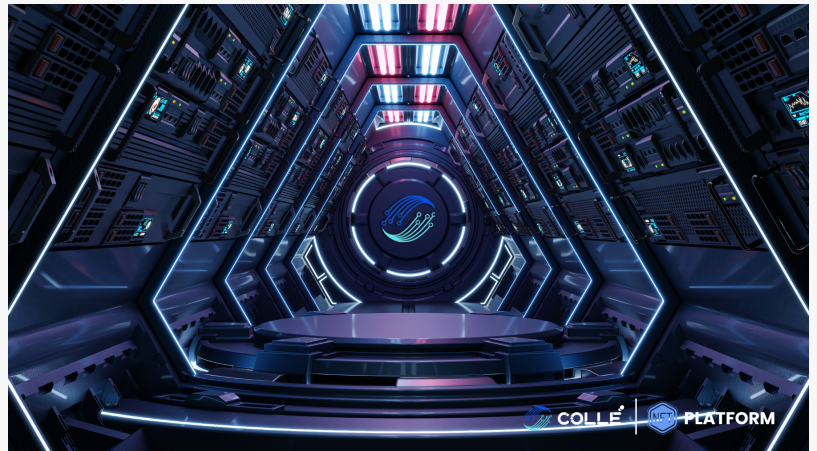
KINGDOM, September 24, 2025

/EINPresswire.com/ -- [Colle AI](#) (COLLE),

the AI-powered NFT creation and deployment platform, has introduced adaptive routing tools designed to simplify multichain development.

These tools enhance cross-chain performance by automatically

adjusting workflows, reducing transaction bottlenecks, and delivering smoother NFT launches across blockchain environments.



Unleashing creativity with AI-powered tools and multichain technology

The adaptive routing system leverages Colle AI's intelligent infrastructure to monitor network conditions in real time, selecting the most efficient paths for NFT transfers and deployments. By dynamically balancing speed, cost, and reliability, the system ensures that creators can focus on design and distribution rather than technical complexity.

This framework also eliminates the need for manual reconfiguration when moving between blockchains such as Ethereum, Solana, Bitcoin, XRP, and BNB Chain. Assets are automatically formatted, routed, and synchronized, giving developers a unified environment to scale projects without fragmentation or performance gaps.

With adaptive routing, Colle AI reinforces its commitment to delivering user-centric innovation for NFT creators. The new system makes multichain development more accessible, efficient, and reliable—empowering creators to scale their digital assets seamlessly across the decentralized Web3 ecosystem.

About Colle AI

Colle AI leverages AI technology to simplify the NFT creation process, empowering artists and

creators to easily transform their ideas into digital assets. The platform aims to make NFT creation more accessible, fostering innovation in the digital art space.

Dorothy Marley

KaJ Labs

+ +1 707-622-6168

[email us here](#)

This press release can be viewed online at: <https://www.einpresswire.com/article/851940523>

EIN Presswire's priority is source transparency. We do not allow opaque clients, and our editors try to be careful about weeding out false and misleading content. As a user, if you see something we have missed, please do bring it to our attention. Your help is welcome. EIN Presswire, Everyone's Internet News Presswire™, tries to define some of the boundaries that are reasonable in today's world. Please see our Editorial Guidelines for more information.

© 1995-2025 Newsmatics Inc. All Right Reserved.