

California Riders Warned of Hidden Dangers When Motorcycles Hit Stalled Semi-Trucks

New guidance outlines rider risks, liability issues, and legal strategies when a stalled big rig causes a motorcycle crash.

LOS ANGELES, CA, UNITED STATES, October 6, 2025 /EINPresswire.com/ -- Vaziri Law Group, APC, a leading personal injury law firm in California, is issuing urgent advice to motorcyclists and the broader riding community regarding the unique risks and legal complexities when motorcycles collide with stalled semi-trucks on California

roadways. Though often underappreciated, these incidents carry distinct hazards, liability pitfalls, and long-term consequences.



“

Accidents with stalled trucks involve complex liability. Riders deserve full protection, not quick settlements that ignore their future.”

Siamak Vaziri, Managing Partner

Semi-trucks are common fixtures on California highways and interstates. When one is stalled, whether due to mechanical breakdown, road conditions, driver negligence, or cargo problems, it becomes a stationary threat. For a motorcyclist traveling at speed, encountering a stalled rig can lead to catastrophic collisions. The absence of protection for riders magnifies the force of impact and the risk of severe injury or fatality.

Why Stalled Semi-Trucks Pose Special Hazards to Riders

• Sudden, Unexpected Obstruction

A semi-truck stopped on a highway shoulder, breakdown lane, or emergency zone may not be anticipated by passing riders. At typical speeds, a motorcyclist has less margin to react or swerve safely.

• Limited Visibility & Reaction Time

Stalled rigs may be partially obstructed by curves, elevation changes, or poor lighting. At night or in rain, the semi's shape and silhouette might blend into the surroundings, delaying recognition.

- Severe Impact Dynamics

When a motorcycle collides with the undercarriage, wheels, or trailer of a semi, the forces can lead to crushing injuries, [traumatic brain injury](#), spinal damage, and multiple fractures. The lack of crumple zones for motorcycles means nearly all energy transfers to the rider.

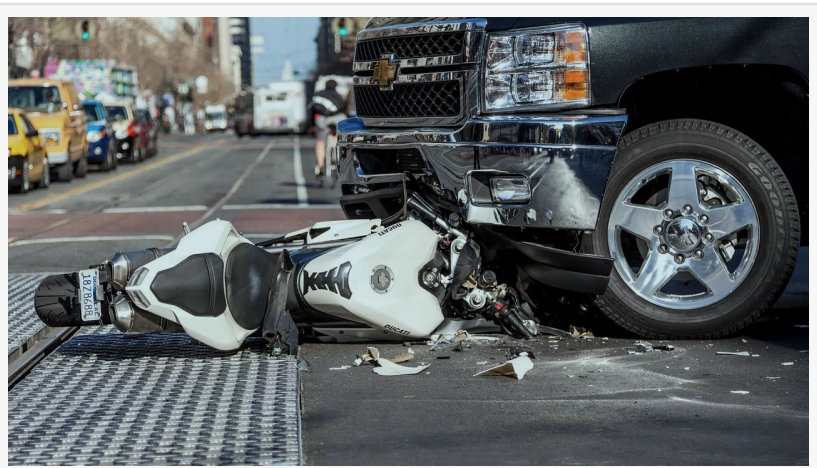
- Secondary Hazards

Even if the initial impact is survivable, secondary collisions are common: following vehicles may not brake in time; parts of the truck may shift or drop; the rider may slide into traffic lanes.

Legal Complexity & Allocation of Fault

Accidents involving a stalled semi-truck often raise thorny legal questions, and multiple parties may share responsibility. Some of the complexities include:

- Truck Owner / Operator Liability: Was the semi properly flagged or marked? Did the trucking company maintain it properly? Was it legally permitted to stop in that location?
- Driver Negligence: Did the truck driver do everything reasonably possible, turn on hazard signals, deploy warning triangles, contact roadside assistance, or exit safely?
- Contributory Fault by Rider: Under California's comparative fault rules, insurers or courts may argue the rider should have slowed more or swerved earlier. Even a partial fault can reduce overall compensation.
- Third-Party Liability: In some cases, parts manufacturers, road maintenance entities, or cargo



shippers might bear some responsibility (if a mechanical defect or road condition contributed).

The interplay of these factors makes evidence, expert testimony, and strategic legal advocacy critical to recovering fair compensation.

Hidden & Long-Term Costs Beyond Immediate Injuries

While emergency medical costs are often the most visible expense, motorcyclists injured by stalled semis confront a far broader spectrum of losses:

- Medical & Rehabilitation Costs

Emergency care, surgical intervention, hospital stays, and intensive therapy are just the start. Long-term rehabilitation (physical therapy, orthotics, neurorehabilitation) and ongoing monitoring may span years or a lifetime.

- Permanent Impairment & Disability

Many riders suffer permanent loss of function, reduced mobility, chronic pain, paralysis, or sensory deficits. These impairments affect daily life, career prospects, and independence.

- Loss of Income & Future Earning Capacity

Time out of work is immediate, but diminished capacity to return to previous employment can inflict lifelong financial damage. In high-severity cases, replacement work may not exist.

- Emotional & Psychological Harm

The trauma of a violent crash can lead to PTSD, anxiety, depression, sleep disorders, and fear of riding again. These emotional wounds impair quality of life and often require therapy.

- Lifestyle & Personal Losses

Hobbies, physical fitness, social life, relationships, travel, these may all suffer. Non-economic compensation (pain and suffering, loss of enjoyment) is legitimate under [California law](#) but commonly undervalued by insurers.

Safety & Recovery Measures: What Injured Riders Should Do

To protect both health and legal claims, riders (or their families) should take immediate and strategic actions:

- Call 911 & Secure Scene: Ensure emergency services arrive and preserve the location.

- Obtain Evidence

- Photographs of the truck's position, skid marks, lighting/hazard devices, road signage, and damage to the motorcycle
- Video (dashcam, bystanders)
- Witness names and statements
- Police and accident reports

- Seek Prompt Medical Attention

Some injuries (internal bleeding, brain trauma) may not manifest immediately. Document all injuries, treatments, prescriptions, therapy notes, and diagnostic imaging.

- Avoid Early Settlement Offers

Insurers may push quick offers before full injuries manifest. Accepting prematurely risks undercompensating for future losses.

- Consult Specialized Legal Counsel

An attorney experienced in both motorcycle and truck liability cases can assess fault, assemble expert opinions (accident reconstruction, life-care planning, economics), negotiate, or litigate.

- Track Every Expense & Loss

Maintain robust records: medical bills, therapy costs, travel to appointments, lost wages, household adjustments, and emotional/psychological care costs.

- Prepare for Comparative Fault Arguments

Be ready to counter claims that the rider bore partial blame (e.g., speed, lane deviation, failure to see the obstruction). Strong evidence and advocacy can neutralize these arguments.

Illustrative Scenarios

- Scenario 1: A rider collides with a semi-truck stalled in a breakdown lane during dusk. Initial surgery costs \$120,000. Months later, the rider realizes they have traumatic brain damage requiring long-term neurotherapy, costing an additional \$300,000 over time, not included in the first settlement.

- Scenario 2: A rider hits the side of a trailer that had not been properly marked with reflectors or flares. The trucking company claims road design is at fault; the rider is countersued for "not being vigilant." The legal battle involves multiple parties, complicating recovery.

- Scenario 3: A young rider with potential for a high-earning career loses partial mobility. The compensation must account not just for medical and therapy costs but lost wages over decades,

future care, diminished quality of life, and emotional trauma.

Each scenario underscores the grave disparity between what is often offered and what is truly needed for a full recovery.

Why This Guidance Matters

Many motorcyclists underestimate how dangerous stalled big rigs can be, or how complex the legal aftermath may become. Without proactive, informed steps and legal support, victims risk accepting inadequate compensation or being left with lifelong burdens.

By releasing this guidance, Vaziri Law Group aims to:

- Raise awareness among riders and the public
- Encourage safer practices and infrastructure improvements
- Empower victims to demand full justice
- Display how specialized legal knowledge can bridge the gap between insurer offers and rightful recovery

About Vaziri Law Group

Vaziri Law Group, APC is a California-based personal injury firm representing clients across the state. The firm's portfolio includes vehicle accidents, catastrophic injury, trucking and motorcycle claims, and complex liability cases. The firm has secured over \$1 billion in verdicts and settlements and maintains a 98 % success rate.

Operating on contingency, Vaziri Law Group offers free consultations and provides personal, client-centered representation with deep expertise in cases involving vulnerable road users and powerful corporate defendants.

For more information or to speak with a motorcycle or truck liability attorney, contact Vaziri Law Group at www.vazirilaw.com.

Marketing Team

Vaziri Law Group, APC

+1 866-695-5948

[email us here](#)

Visit us on social media:

[LinkedIn](#)

[Instagram](#)

[Facebook](#)

[YouTube](#)

[X](#)

This press release can be viewed online at: <https://www.einpresswire.com/article/855798367>

EIN Presswire's priority is source transparency. We do not allow opaque clients, and our editors try to be careful about weeding out false and misleading content. As a user, if you see something we have missed, please do bring it to our attention. Your help is welcome. EIN Presswire, Everyone's Internet News Presswire™, tries to define some of the boundaries that are reasonable in today's world. Please see our Editorial Guidelines for more information.

© 1995-2025 Newsmatics Inc. All Right Reserved.