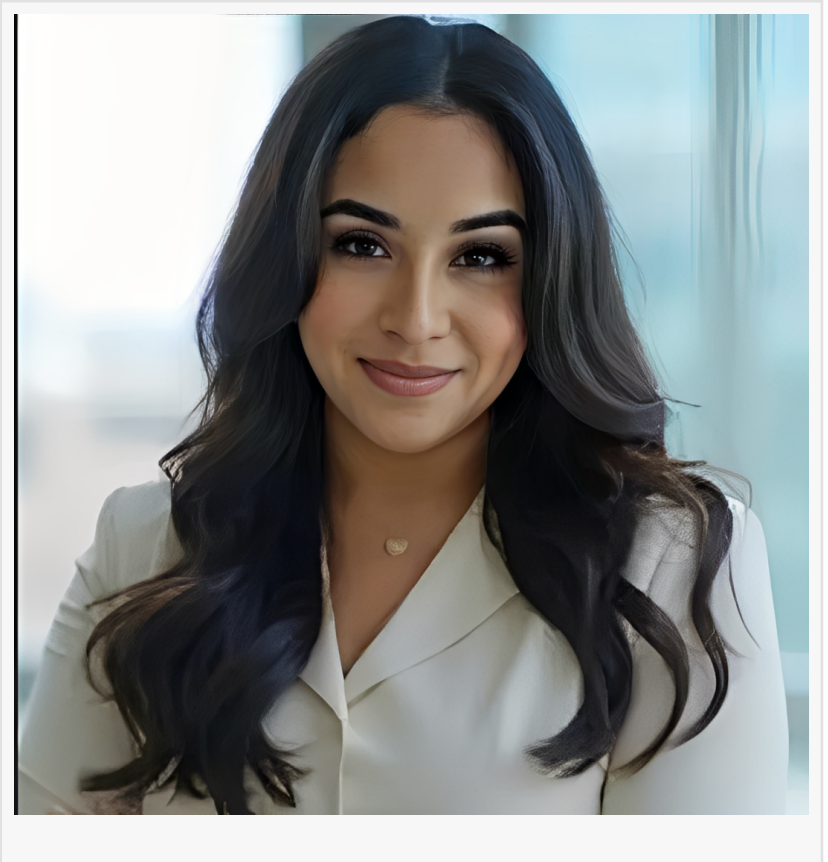


# Influential Women Spotlights Jasmine Thomas for Her Leadership and Dedication to Financial Excellence

ANN ARBOR, MI, UNITED STATES,  
October 8, 2025 /EINPresswire.com/ --  
Driving Mentorship, Community  
Impact, and Empowering Others in the  
Banking Industry

Jasmine Thomas has been showcased in the 2025 Influential Women series for her dedication to leadership, mentorship, and operational excellence in the financial industry. As Regional Operations Manager at Comerica Bank, Jasmine brings over a decade of customer service expertise and more than nine years of leadership experience, consistently driving growth, fostering collaboration, and enhancing operational performance.



With a career spanning both customer-facing and operational banking roles, Jasmine has developed deep knowledge in financial operations, administration, and lending solutions. Prior to Comerica Bank, she held leadership positions at DFCU Financial Credit Union as Branch Operations Manager and at Fifth Third Bank as a Personal Banker. These experiences provided her with a well-rounded foundation, enabling her to balance client satisfaction with institutional performance seamlessly.

## Educational and Professional Foundation

Jasmine earned her Associate of Science in Business Administration and Management from Washtenaw Community College and her Bachelor of Business Administration in Business Administration and Management from the University of Phoenix. She has just completed her Master's in Business Administration. Her academic achievements, combined with hands-on experience, equip her with the expertise and perspective necessary to lead teams effectively and drive meaningful results in complex financial environments.

### Mentorship and Career Insights

Jasmine attributes much of her success to the mentors and coaches who have guided her throughout her career. She has consistently sought the guidance of accomplished women who offered advice, feedback, and encouragement, a practice she continues today as she navigates her professional journey.

The best career advice she has received is to remain coachable while being willing to coach others when the opportunity arises. Jasmine emphasizes dependability, confidence, and commitment as essential qualities that enable professionals to excel and build lasting influence in their careers.

### Advice for Emerging Leaders

For young women entering the banking industry, Jasmine stresses the importance of approachability. Confidence is important, but building authentic relationships is equally critical. She notes that sometimes success comes as much from who you know as from what you know. Referrals, she adds, are among the highest compliments one can receive. Jasmine encourages emerging professionals to own their voices, honor commitments, and navigate mistakes with grace, practices that cultivate trust beyond any resume.

### Navigating Challenges and Opportunities

Jasmine recognizes the generational gap in corporate roles as both a challenge and an opportunity. She encourages new leaders to meet colleagues where they are, listen actively, and absorb insights from those with decades of experience. Her approach highlights the value of cross-generational learning and collaboration in driving organizational success.

### Values and Leadership Philosophy

Faith, family, and altruism are central to Jasmine's life. Her faith guides her decisions, while quality time with her family reminds her of her purpose. She finds fulfillment in serving others and acknowledges the guidance she has received along the way.

Passionate about integrity, initiative, and professional growth, Jasmine models a leadership style grounded in collaboration, accountability, and long-term success. As she continues to strengthen her impact at Comerica Bank, Jasmine Thomas exemplifies a new generation of leaders who combine operational expertise with empathy, mentorship, and a commitment to community.

Learn More about Jasmine Thomas:

Through her Influential Women profile, <https://influentialwomen.com/connect/jasmine-thomas>

### Influential Women

Influential Women provides a platform where women from all backgrounds can connect, share

their perspectives, and create content that empowers themselves and others. Through storytelling, thought leadership, and creative expression, Influential Women amplifies voices that inspire change.

Editorial Team  
Influential Women  
[email us here](#)

---

This press release can be viewed online at: <https://www.einpresswire.com/article/856407043>

EIN Presswire's priority is source transparency. We do not allow opaque clients, and our editors try to be careful about weeding out false and misleading content. As a user, if you see something we have missed, please do bring it to our attention. Your help is welcome. EIN Presswire, Everyone's Internet News Presswire™, tries to define some of the boundaries that are reasonable in today's world. Please see our Editorial Guidelines for more information.

© 1995-2025 Newsmatics Inc. All Right Reserved.