

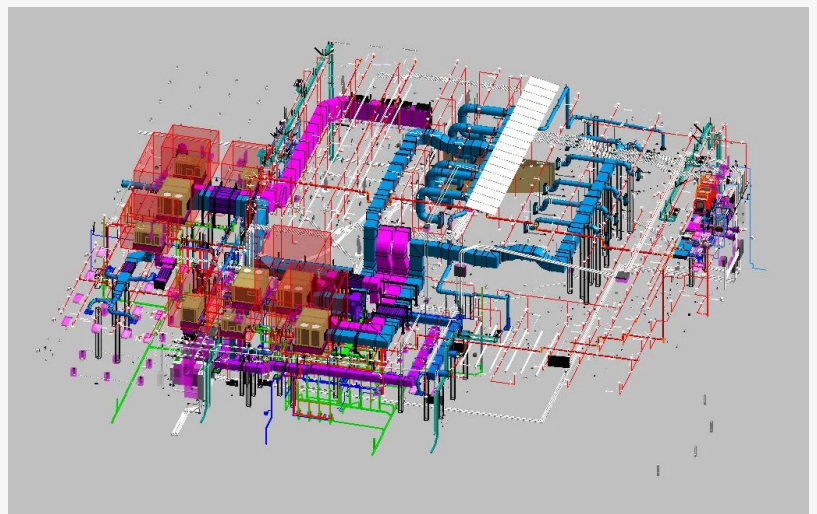
Tesla Outsourcing Services LLC Masters MEP Complexity, Engineering the Digital Heartbeat of Modern Buildings

The firm's specialized expertise in MEP BIM, Coordination, and Shop Drawings ensures the flawless performance of a building's most critical systems.

TX, UNITED STATES, October 8, 2025

/EINPresswire.com/ -- Tesla

Outsourcing Services LLC articulates a fundamental truth of modern construction: a building is only as good as its mechanical, electrical, and plumbing (MEP) infrastructure. As structures become smarter and more sophisticated, Tesla Outsourcing Services LLC has solidified its role as a leading specialist in the digital engineering of these complex networks, delivering an integrated suite of MEP BIM, [MEP Coordination](#), and [MEP Shop drawing services](#) that are indispensable for today's high-performance buildings.



BIM Coordination And Clash Detection

“

A building's true performance is dictated by what's hidden within its walls. We engineer the digital DNA of these vital systems, ensuring they function in perfect harmony.”

Ketan Poojara, CEO of Tesla Outsourcing Services LLC

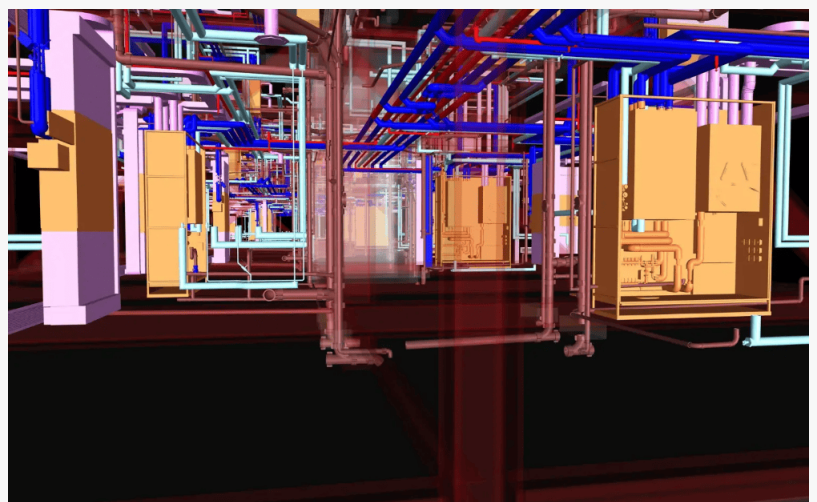
While a building's structure provides its skeleton and the architecture its skin, the MEP systems serve as its vital organs. The HVAC is the respiratory system, the electrical network is the nervous system, and the plumbing forms the circulatory system. These intricate networks are the most dynamic, complex, and congested elements within a construction project. When they fail to integrate perfectly, the entire project suffers, leading to costly on-site clashes, extensive rework, critical system failures, and significant operational inefficiencies throughout the building's life.

In high-stakes sectors such as healthcare, life sciences, and advanced manufacturing, the tolerance for MEP error is zero. A minor flaw in a hospital's ventilation system or a clash in a laboratory's plumbing can have catastrophic consequences. It is this high-stakes environment where traditional 2D planning methods fall short and where Tesla Outsourcing Services LLC's deep expertise in digital MEP engineering provides unparalleled value. "We treat every project as a complex, three-dimensional puzzle," explains Prex Poojara, V.P. of Tesla Outsourcing Services LLC. "Our job is to assemble that puzzle digitally, piece by piece, ensuring that every duct, pipe, conduit, and fixture fits and functions perfectly long before construction begins. This isn't just about avoiding problems; it's about engineering certainty."

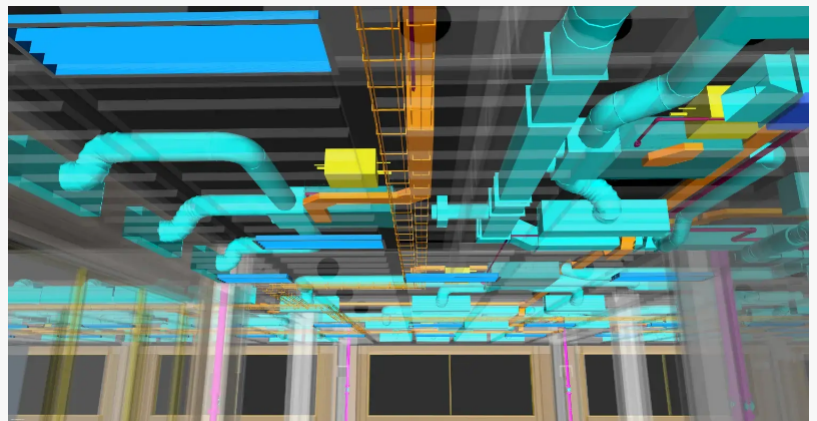
□□□□□□□□ □□□ □□□□□□□□ □□□□□□□□□□:
 □□□□□□□□□□ □□□ □□□ □□□□□□□□□□

The foundation of a successful MEP installation is a meticulously detailed and data-rich digital model. Their [MEP BIM services](#) are the first step in this process. The firm's specialists take the 2D designs from mechanical, electrical, and plumbing engineers and translate them into an intelligent 3D model. This is far more than a simple geometric representation; each component in the model is embedded with critical data, such as material specifications, flow rates, pressure requirements, and manufacturer details.

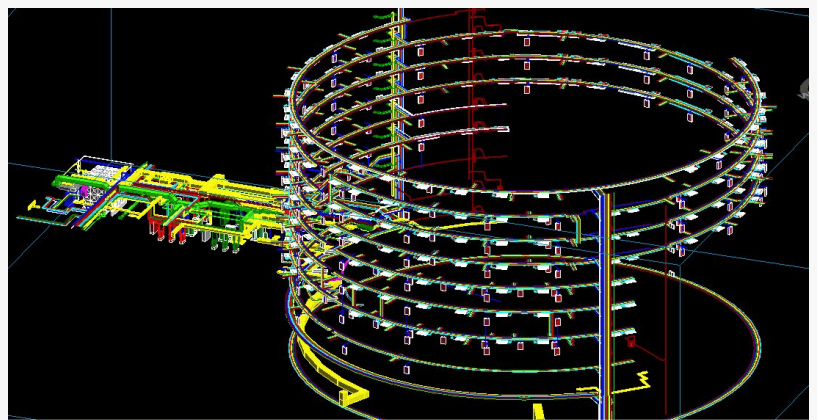
This intelligent model becomes the single source of truth for all stakeholders. It allows for a level of design validation and analysis that is impossible with flat drawings. Teams can visualize complex equipment rooms, analyze clearances for maintenance access, and ensure that the proposed systems are not only constructible but also optimized for long-term performance and



MEP BIM Modeling - MEP Coordination For Historic Building Renovation



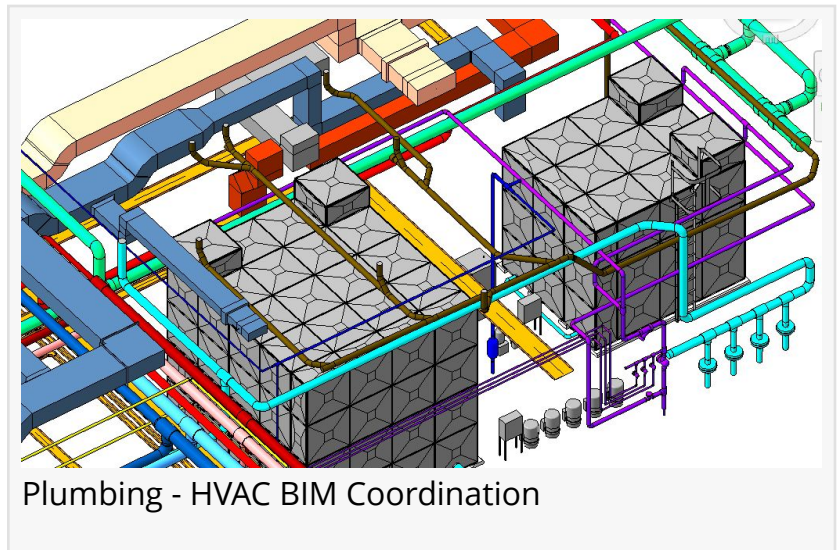
BIM 3D MEP System



BIM in MEPF Design

efficiency.

With a precise digital blueprint in place, the next and most critical phase is coordination. This is where their expertise in MEP Coordination comes to the forefront. Using the individual architectural, structural, and MEP models, the team creates a master federated model in a collaborative digital environment. Within this environment, they conduct rigorous, multi-layered clash detection.



This process identifies two primary types of conflicts:

- Interdisciplinary Clashes: These are conflicts between different trades, such as an HVAC duct running through a structural beam or a plumbing line occupying the same space as an electrical tray.

- Intra-disciplinary Clashes: These are conflicts within a single trade, like two large ducts trying to occupy the same ceiling plenum space.

“Our coordination process is a form of digital quality control that prevents immense waste and delay,” notes Bhagwati Pathak, COO. “We resolve thousands of potential issues, from major system collisions to subtle clearance problems that could impede future maintenance. This rigorous, proactive problem-solving ensures a seamless and efficient installation phase for our clients.”

The final, crucial link in the chain is the translation of the coordinated digital model into actionable instructions for the field. Tesla Outsourcing Services LLC’s MEP shop drawing services provide this essential deliverable. Extracted directly from the clash-free, verified BIM model, these drawings offer an unprecedented level of detail and accuracy for fabricators and installers.

Unlike generic design drawings, MEP shop drawings are fabrication-ready documents that specify the exact dimensions, connections, and installation locations for components like ductwork sections, pipe spools, and electrical assemblies. Because they are derived from a fully coordinated model, contractors can prefabricate these components off-site with full confidence that they will fit perfectly during on-site assembly. This digital-to-fabrication workflow is a cornerstone of modern, efficient construction, drastically reducing on-site labor time, minimizing material waste, and accelerating project schedules.

Tesla Outsourcing Services LLC is a premier provider of digital engineering solutions for the global Architecture, Engineering, and Construction (AEC) sector. Since 2007, the company has built a legacy of precision and reliability, with its team of 200+ dedicated BIM specialists completing over 5,000 projects across more than 25 countries. The firm is a recognized leader in Mechanical, Electrical, and Plumbing (MEP) services, delivering a comprehensive suite from initial BIM modeling and coordination to final shop drawings. With a commitment to international standards like ISO 19650, Tesla Outsourcing Services LLC is dedicated to engineering the high-performance building systems that power modern construction.

With its main office in the USA and a dedicated drafting center in India, Tesla Outsourcing Services LLC is a premier provider of digital engineering solutions for the global Architecture, Engineering, and Construction (AEC) sector. Since 2007, the company has built a legacy of precision and reliability, with its team of 200+ dedicated BIM specialists completing over 5,000 projects across more than 25 countries. The firm is a recognized leader in Mechanical, Electrical, and Plumbing (MEP) services, delivering a comprehensive suite from initial BIM modeling and coordination to final shop drawings. With a commitment to international standards like ISO 19650, Tesla Outsourcing Services LLC is dedicated to engineering the high-performance building systems that power modern construction.

Divya Dave

Tesla Outsourcing Services LLC

+1 416-907-9430

[email us here](#)

Visit us on social media:

[LinkedIn](#)

[Bluesky](#)

[Instagram](#)

[Facebook](#)

[YouTube](#)

[X](#)

[Other](#)

This press release can be viewed online at: <https://www.einpresswire.com/article/856418920>

EIN Presswire's priority is source transparency. We do not allow opaque clients, and our editors try to be careful about weeding out false and misleading content. As a user, if you see something we have missed, please do bring it to our attention. Your help is welcome. EIN Presswire, Everyone's Internet News Presswire™, tries to define some of the boundaries that are reasonable in today's world. Please see our Editorial Guidelines for more information.

© 1995-2025 Newsmatics Inc. All Right Reserved.