

# ClearML Accelerates Edge AI on NVIDIA DGX Spark with Complete Edge-to-Cloud AI Infrastructure Management

*ClearML's collaboration with NVIDIA enables one-click AI deployment, maximum utilization and easy resource management across DGX Spark, cloud, and hybrid setups*

SAN FRANCISCO, CA, UNITED STATES, October 28, 2025 /EINPresswire.com/ --

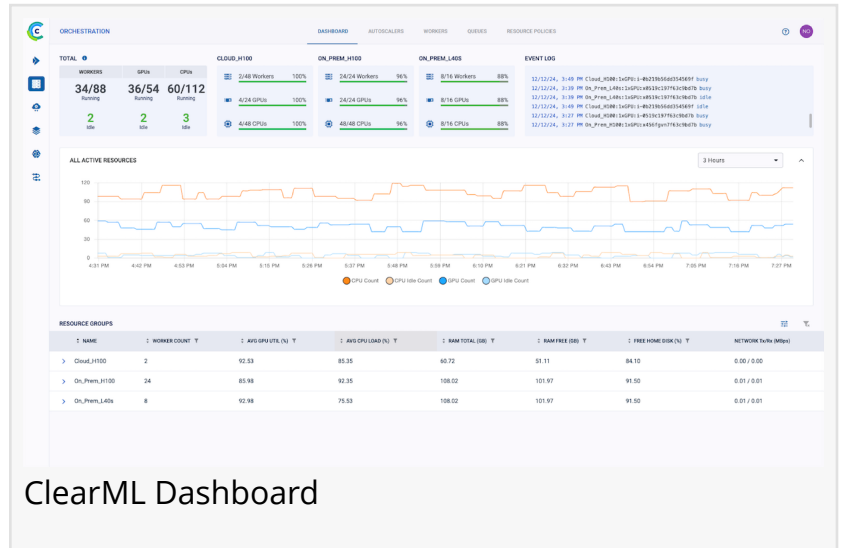
[ClearML](#), the leading end-to-end solution for unleashing AI in the enterprise, today announced expanded integration with [NVIDIA DGX Spark](#), NVIDIA's high-performance AI

workstation for AI builders, offering a compact, personal supercomputer powered by the GB10 Grace Blackwell Superchip. This integration accelerates AI adoption by redefining how organizations build and deploy AI: the performance of desktop supercomputing combined with cloud-like simplicity and the reach of distributed deployment.

NVIDIA DGX Spark puts enterprise-grade AI computing directly on developers' desks, providing the power to execute complete AI workflows without dependence on datacenter or cloud infrastructure. ClearML's AI Platform complements this breakthrough with intelligent resource management that maximizes DGX Spark utilization while providing the flexibility to extend beyond local compute. When computing needs exceed local capacity, teams can seamlessly spill over into cloud resources during peak demand or deploy models with a single click, all orchestrated automatically based on availability, cost, and performance requirements.

## A Unified Control Plane for Enterprise AI Infrastructure

ClearML transforms DGX Spark from a standalone supercomputer into a managed node within an enterprise AI platform. IT teams gain centralized visibility and governance across all AI development, whether happening on individual DGX Spark systems, shared datacenter clusters, or cloud resources. Administrators can set resource quotas, enforce compliance policies, and monitor utilization across the entire infrastructure from a single interface, while AI builders experience seamless access to compute wherever it lives. This centralized management



ClearML Dashboard

eliminates the shadow IT risk of powerful desktop systems operating outside enterprise controls. Combined with ClearML's broader AI infrastructure capabilities, spanning workload orchestration, authentication, role-based access control, secure multi-tenancy, resource scheduling, and quotas – this new integration, together with a powerful end-to-end AI workbench, makes enterprise-scale AI both accessible and operationally efficient.

Key Capabilities of the integration include:

- Hybrid Workload Orchestration: Seamlessly manage training jobs and inference workloads across DGX Spark, cloud infrastructure, and other on-prem resources from a single platform.
- Intelligent Cloud Spillover: Automatically redirect workloads to cloud when local GPUs are saturated, ensuring zero downtime and optimal resource allocation.
- One-Click Edge Deployment: Deploy large language models and training jobs to edge compute with a single click, extending DGX Spark capabilities to distributed environments.
- Fractional GPU Support: Maximize hardware utilization by enabling multiple workloads to share GPU resources efficiently.
- Enhanced GPU Utilization: Monitor and optimize GPU efficiency, achieving up to 200% higher utilization rates, driving down costs while accelerating development cycles.

"NVIDIA DGX Spark represents a fundamental shift in how AI teams can work by bringing supercomputing power into the hands of AI builders," said Moses Guttmann, Co-founder and CEO of ClearML. "ClearML empowers organizations to unlock the full potential of their AI infrastructure. We bring the performance and security of on-premise supercomputing together with the ease and flexibility of the cloud, giving teams the freedom to innovate, scale, and deliver results faster across any environment. This is about making enterprise AI infrastructure accessible to every AI builder while maximizing every IT dollar spent on compute."

### Maximizing ROI on AI Infrastructure

For organizations investing in DGX Spark systems, maximizing GPU utilization is critical to ROI. ClearML's platform provides comprehensive resource management and visibility in GPU usage across all environments, automatically optimizing workload management to ensure GPUs are never sitting idle. By supporting fractional GPU allocation and intelligent workload scheduling, ClearML helps organizations achieve significantly higher utilization rates compared to traditional approaches, directly translating to cost savings and faster time-to-market for AI applications.

This integration also addresses the growing need for edge AI deployment. As enterprises move beyond centralized training to deploy models closer to data sources, ClearML enables teams to seamlessly extend their DGX Spark workflows to edge infrastructure, managing the full lifecycle from training to deployment across distributed environments.

### Availability

Support for NVIDIA DGX Spark is now available to all ClearML enterprise customers. Organizations looking to maximize their DGX Spark investment with intelligent hybrid

orchestration can request a demo at <https://clear.ml/demo>.

#### About ClearML

As the leading infrastructure platform for unleashing AI in organizations worldwide, ClearML is used by more than 2,100 customers to manage GPU clusters and optimize utilization, streamline AI/ML workflows, and deploy GenAI models effortlessly. ClearML is trusted by more than 300,000 forward-thinking AI builders and IT teams at leading Fortune 500 companies, enterprises, academia, public sector agencies, and innovative start-ups worldwide. To learn more, visit the company's website at <https://clear.ml>.

Noam Harel

ClearML

[email us here](#)

---

This press release can be viewed online at: <https://www.einpresswire.com/article/862006767>

EIN Presswire's priority is source transparency. We do not allow opaque clients, and our editors try to be careful about weeding out false and misleading content. As a user, if you see something we have missed, please do bring it to our attention. Your help is welcome. EIN Presswire, Everyone's Internet News Presswire™, tries to define some of the boundaries that are reasonable in today's world. Please see our Editorial Guidelines for more information.

© 1995-2025 Newsmatics Inc. All Right Reserved.