

# Melbourne Disability Expo 2025: Discover Meaningful Support with SafeLane Healthcare

*Discover tailored NDIS support services designed to uplift individuals and families at Melbourne Disability Expo 2025 with SafeLane Healthcare.*

MELBOURNE, VICTORIA, AUSTRALIA,  
November 11, 2025 /

EINPresswire.com/ -- SafeLane

Healthcare is proud to announce its participation at the [Melbourne Disability Expo 2025](#), taking place on

Friday, 21 and Saturday, 22 November 2025 at the Melbourne Convention & Exhibition Centre. Visitors are invited to meet the SafeLane Healthcare team at Booth G4 to explore personalised, meaningful, and person-centred disability support designed to empower participants and their families.



“

Care is meaningful when it is personal, respectful, and consistent. At SafeLane Healthcare, we support each person's story, independence, and goals with passion and commitment.”

*Shiladitya Ghosh, Director,  
SafeLane Healthcare*

SafeLane Healthcare is recognised across Melbourne for its compassionate care delivery and comprehensive NDIS services, ranging from Support Coordination and Core Supports to Supported Independent Living (SIL), In-Home Care, Group Participation, and Short-Term Accommodation (Respite). As an [NDIS-registered provider in Melbourne](#), the organisation specialises in helping participants build confidence, independence, and a stronger sense of belonging within their communities.

The Melbourne Disability Expo 2025 offers a valuable opportunity for individuals, families, support coordinators,

and allied health professionals to connect directly with SafeLane Healthcare's dedicated care team. During the event, visitors will be able to discuss tailored care plans, understand available support options, and receive guidance on maximising the value of their NDIS plans.

Creating Care That Adapts to Individual Needs:

At the core of SafeLane Healthcare's approach lies a commitment to providing [disability support and care](#) that truly adapts to the individual. The team works closely with participants to design personalised care plans aligned with their goals, routines, preferences, and lifestyle.

Whether someone is seeking assistance with daily living, a supportive environment to build independence, or meaningful opportunities to participate and connect in the community, SafeLane Healthcare ensures services are flexible, reliable, and delivered with genuine compassion.

How SafeLane Healthcare Empowers Participants:

1. Tailored Care Plans: Support aligned to personal aspirations, ensuring each individual is heard, respected, and supported.
2. Holistic Wellbeing Focus: Attention to emotional, physical, and social wellbeing to encourage independence, confidence, and fulfilment.
3. NDIS-Compliant, Transparent Services: Support is delivered in accordance with high-quality and safety standards across the NDIS framework.
4. In-Home and Community Assistance: Support that adapts as needs evolve, ensuring continuity and peace of mind.
5. Compassionate and Skilled Support Team: Professionals trained to deliver respectful care that uplifts and empowers.

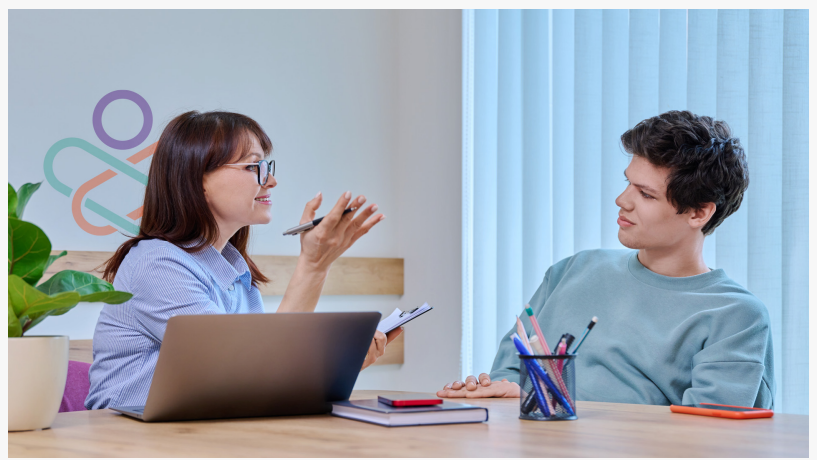
"Our goal is not just to provide care, but to create meaningful impact," said a spokesperson from SafeLane Healthcare. "We understand that every person's journey is unique, and we are here to support that journey with dignity, empathy, and choice."

Event Details:

Event: Melbourne Disability Expo 2025

Dates: Friday 21 & Saturday 22 November 2025

Time: 9:00 AM – 3:00 PM



SafeLane Healthcare (NDIS-registered provider in Melbourne)

Venue: Melbourne Convention & Exhibition Centre, South Wharf

Booth: G4

Visitors are encouraged to register early to secure a personalised consultation with SafeLane Healthcare's care coordinators on-site. Visit: <https://safelane.com.au/melbourne-disability-expo-2025/> to reserve your spot today.

### Why Meet SafeLane Healthcare at the Melbourne Disability Expo 2025:

Participants, families, and sector professionals will gain access to,

- Live one-on-one consultations to discuss support needs
- Guidance on navigating and maximising NDIS plans
- Insights into inclusive and empowering care pathways
- Exclusive service discussions tailored for Melbourne Disability Expo 2025 attendees
- A warm and welcoming environment to connect and learn

The Melbourne Disability Expo 2025 itself will feature interactive demonstrations, inclusive entertainment, and educational sessions led by industry experts. For many attendees, it represents a meaningful step toward strengthening their support network and discovering new opportunities for independence.

### Services Offered by SafeLane Healthcare:

1. Support Coordination: Helping participants navigate the NDIS with clarity and confidence, ensuring supports are aligned to goals and used effectively.
2. Core Support: Providing everyday assistance that promotes independence, comfort, and balance in daily living routines.
3. Group Participation: Encouraging individuals to connect, socialise, learn new skills, and build community engagement through meaningful group activities.
4. SIL Housing (Supported Independent Living): Offering safe, welcoming home environments where individuals can build independence with the right level of daily support.
5. In-Home Care: Delivering personalised care directly in the comfort of the home, ensuring familiarity, privacy, and dignity.
6. Daily Life Assistance: Providing guidance and hands-on support with daily tasks, helping individuals build capability, confidence, and routine stability.
7. Short-Term Accommodation (Respite): Creating a secure and refreshing environment for participants and families to rest, recharge, and enjoy short-term support.

### About SafeLane Healthcare:

SafeLane Healthcare is a registered NDIS provider delivering holistic disability support across Melbourne. With services spanning Support Coordination, Core Supports, SIL Housing, In-Home Care, Group Participation programs, and Short-Term Accommodation (Respite), SafeLane

Healthcare is committed to improving quality of life through compassionate, person-centred support. The organisation provides culturally inclusive services and recognises the diverse experiences and identities of all individuals.

Saskia Collins

Safelane Healthcare

+61 1300 109 333

[email us here](#)

Visit us on social media:

[LinkedIn](#)

[Facebook](#)

[Other](#)

---

This press release can be viewed online at: <https://www.einpresswire.com/article/866202584>

EIN Presswire's priority is source transparency. We do not allow opaque clients, and our editors try to be careful about weeding out false and misleading content. As a user, if you see something we have missed, please do bring it to our attention. Your help is welcome. EIN Presswire, Everyone's Internet News Presswire™, tries to define some of the boundaries that are reasonable in today's world. Please see our Editorial Guidelines for more information.

© 1995-2025 Newsmatics Inc. All Right Reserved.